

Lease Statistics (The First Half of FY2011)

The lease transaction volume in the first half of FY2011 (from April 2011 to September 2011) is 2,146.3 billion yen, decreased by 4.2% compared with the same period of the previous year.

With respect to the type of equipment on a half year basis, Factory Equipment (17.6% up) has continuously showed positive growth since the second half of FY2010. In addition, Construction Equipment (22.7% up) has also turned to positive growth. On the other hand, Information Equipment (2.5% down) has continued to show negative growth since second half of FY2005 and Commercial and Service Equipment (4.3% down) has done so since the first half of FY2006. In addition, the other types have been also on the decrease.

The lease transaction volume in September 2011 is 441.5 billion yen, decreased by 10.8%, compared with the same period of the previous year. With respect to the type of equipment, Construction Equipment (24.7% up) and Transport Equipment (0.4% up) have respectively continued to show positive growth. On the other hand, Factory Equipment (12.8% down), Information and Communication Equipment (6.0% down), and Industrial Equipment (27.4% down) have respectively turned to negative growth. The other types, such as Office Equipment (6.8% down), Medical Equipment (4.3% down), and Commercial and Service Equipment (3.1% down) have been also on the decrease.

Changes in Leasing Transaction Volume (Monthly)

Year, Month	Leasing Cases	Yearly Change (%)	Leasing Volume (in million yen)	Yearly Change (%)
9	168,008	102.0	494,727.4	102.6
10	143,020	98.1	376,623.6	92.4
11	133,950	100.6	310,698.5	94.0
12	146,001	103.5	400,180.8	100.2
2011, 1	116,623	103.3	335,558.8	107.0
2	124,797	104.3	319,321.1	90.0
3	164,567	90.2	564,017.0	88.1
4	165,530	100.4	422,501.9	101.0
5	137,165	87.9	293,294.0	86.1
6	151,756	93.5	347,342.0	100.6
7	161,923	91.0	319,229.3	96.4
8	139,994	99.2	322,444.1	104.2
9	165,196	98.3	441,457.4	89.2
2011,4 – 2011,9	921,564	95.0	2,146,268.8	95.8

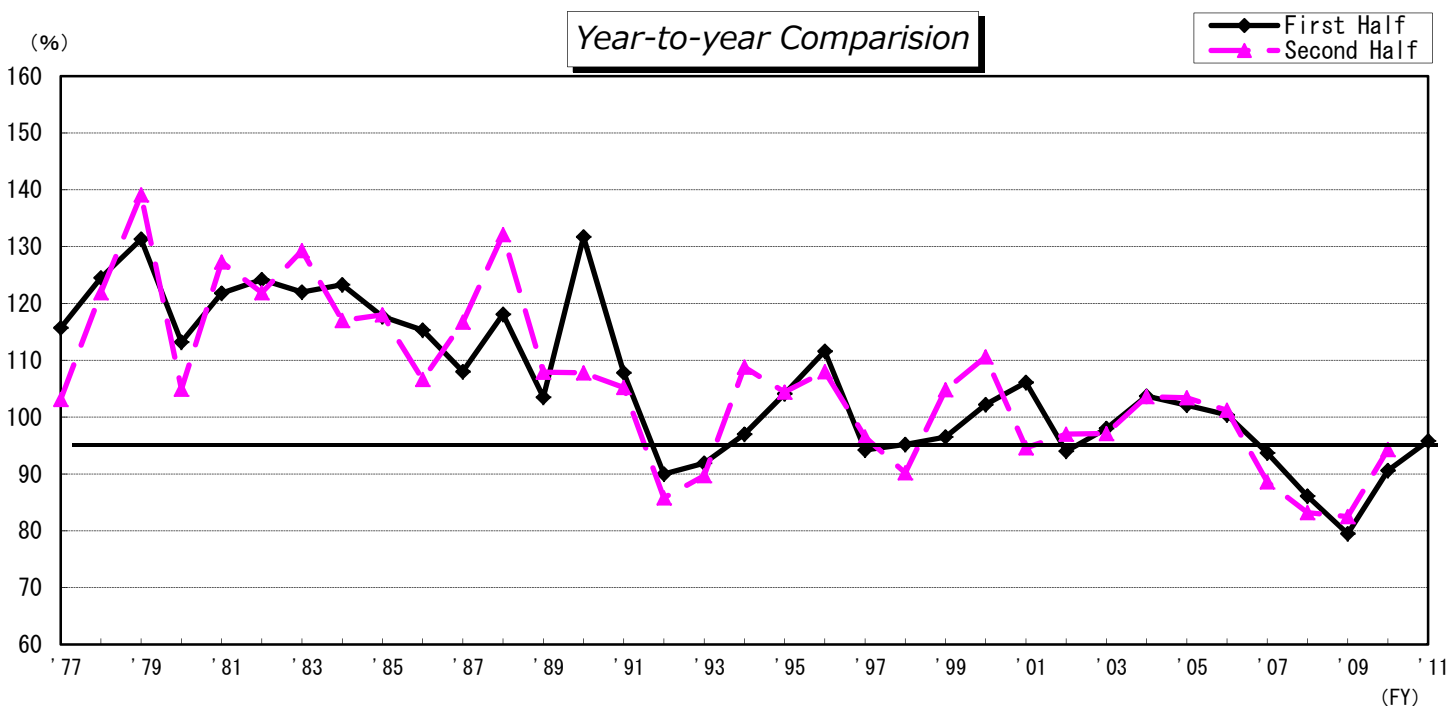
★ Corporations researched: 227 (as of September 2011)

Change in Total of Lease Transaction Volume (Separated by Half)

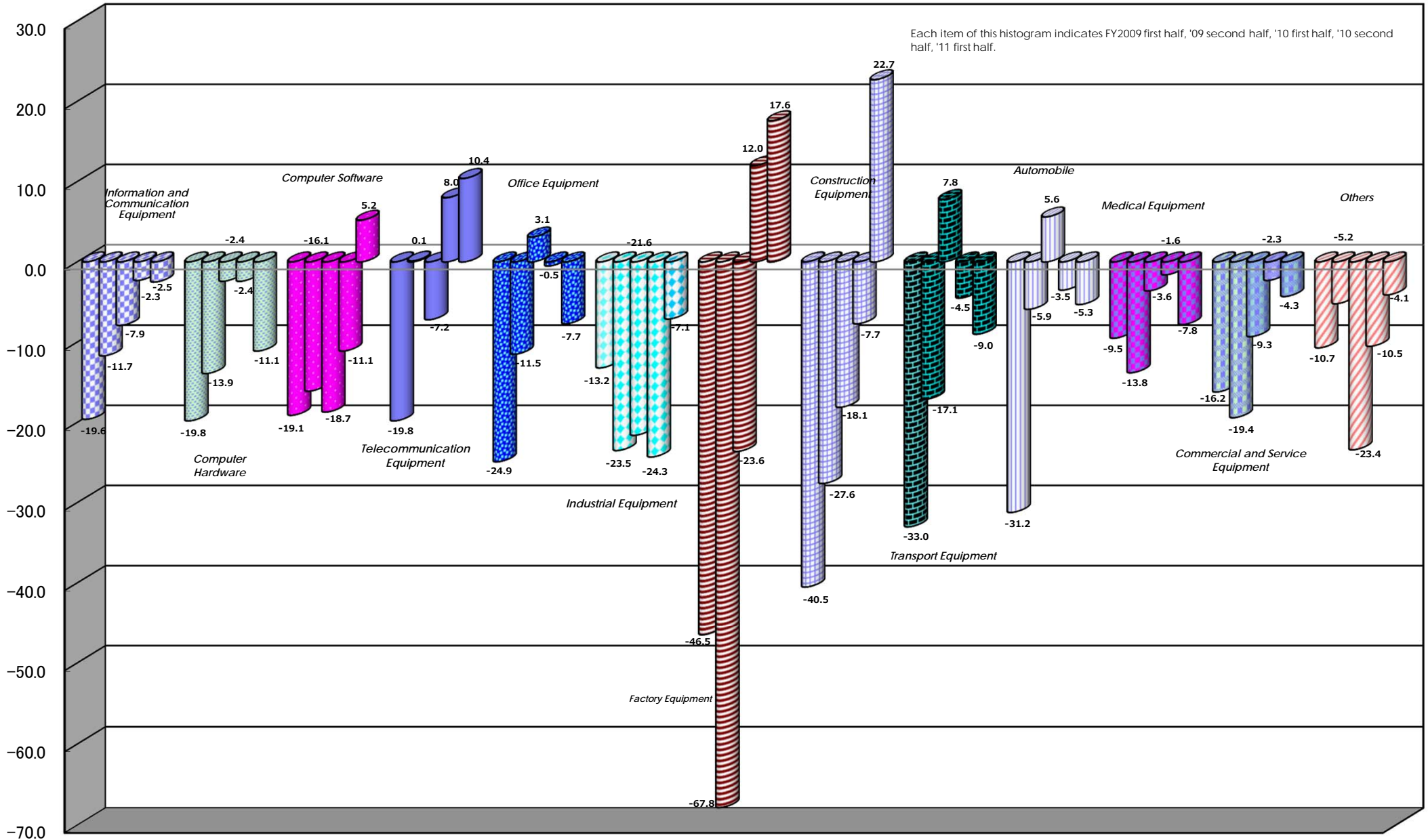
(in 100 million yen %)

Fiscal Year	First Half (April-September)			Second Half (October-March)			
	Leasing Volume	Yearly Change	Half-yearly Change	Leasing Volume	Yearly Change	Half-yearly Change	
1972	1,489	—	—	2,079	—	139.6	
1973	2,649	177.9	127.4	2,608	125.4	98.4	
1974	2,713	102.4	104.0	2,670	102.4	98.4	
1975	2,844	104.8	106.5	2,831	106.0	99.5	
1976	(regular member)	3,131	110.1	110.6	3,612	127.6	115.4
	(total)	3,629	—	—	4,280	—	117.9
1977	4,200	115.7	98.1	4,415	103.1	105.1	
1978	5,227	124.5	118.4	5,381	121.9	102.9	
1979	6,863	131.3	127.5	7,484	139.1	109.0	
1980	7,766	113.2	103.8	7,850	104.9	101.1	
1981	9,458	121.8	120.5	9,996	127.3	105.7	
1982	11,751	124.2	117.6	12,181	121.9	103.7	
1983	14,333	122.0	117.7	15,755	129.3	109.9	
1984	17,666	123.3	112.1	18,428	117.0	104.3	
1985	20,800	117.7	112.9	21,736	118.0	104.5	
1986	23,992	115.3	110.4	23,172	106.6	96.6	
1987	25,901	108.0	111.8	27,033	116.7	104.4	
1988	30,595	118.1	113.2	35,723	132.1	116.8	
1989	31,659	103.5	88.6	38,553	107.9	121.8	
1990	41,700	131.7	108.2	41,579	107.8	99.7	
1991	44,960	107.8	108.1	43,745	105.2	97.3	
1992	40,474	90.0	92.5	37,532	85.8	92.7	
1993	37,185	91.9	99.1	33,684	89.7	90.6	
1994	36,082	97.0	107.1	36,643	108.8	101.6	
1995	37,554	104.1	102.5	38,249	104.4	101.9	
1996	41,907	111.6	109.6	41,290	108.0	98.5	
1997	39,474	94.2	95.6	39,860	96.5	101.0	
1998	37,595	95.2	94.3	35,944	90.2	95.6	
1999	36,298	96.5	101.0	37,661	104.8	103.8	
2000	37,081	102.2	98.5	41,644	110.6	112.3	
2001	39,356	106.1	94.5	39,405	94.6	100.1	
2002	36,996	94.0	93.9	38,224	97.0	103.3	
2003	36,252	98.0	94.8	37,112	97.1	102.4	
2004	37,576	103.7	101.3	38,432	103.6	102.3	
2005	38,380	102.1	99.9	39,752	103.4	103.6	
2006	38,541	100.4	97.0	40,215	101.2	104.3	
2007	36,119	93.7	89.8	35,627	88.6	98.6	
2008	31,091	86.1	87.3	29,654	83.2	95.4	
2009	24,712	79.5	83.3	24,461	82.5	99.0	
2010	22,398	90.6	91.6	23,064	94.3	103.0	
2011	21,463	95.8	93.1				

Note: Leasing volume before FY 1976 does not include that of associated members.



Lease Transaction Volume by Type of Equipment - Year-to-year Comparision (Half Year Basis)



Leasing Volume by Type of Equipment (Sep. 2011)

		Leasing cases	Component Ratio (%)	Year-on-year Change (%)	Leasing Volume (in million yen)	Component Ratio (%)	Year-on-year Change (%)
1	Information and Communication Equipment	73,889	44.7	96.4	168,279.2	38.1	94.0
	Computer Hardware	(40,824)	(24.7)	(102.8)	(82,037.8)	(18.6)	(78.8)
	Computer Software	(11,209)	(6.8)	(75.5)	(39,824.7)	(9.0)	(93.9)
	Telecommunication Equipment	(21,856)	(13.2)	(99.1)	(46,416.7)	(10.5)	(143.2)
2	Office Equipment	29,753	18.0	96.9	40,241.0	9.1	93.2
3	Industrial Equipment	4,114	2.5	83.8	40,884.3	9.3	72.6
4	Factory Equipment	576	0.3	106.7	10,228.7	2.3	87.2
5	Construction Equipment	1,413	0.9	133.9	13,047.1	3.0	124.7
6	Transport Equipment	17,746	10.7	104.6	52,584.4	11.9	100.4
	Automobile	(16,142)	(9.8)	(105.4)	(46,207.0)	(10.5)	(110.8)
	Vessel	(11)	(0.0)	(183.3)	(317.6)	(0.1)	(12.1)
7	Medical Equipment	5,337	3.2	103.5	26,690.3	6.0	95.7
8	Commercial and Service Equipment	19,906	12.0	88.8	58,022.1	13.1	96.9
	Commercial Equipment	(13,368)	(8.1)	(76.1)	(34,885.8)	(7.9)	(99.3)
9	Others	12,462	7.5	129.2	31,480.3	7.1	58.3
	Physical and Chemical Equipment	(1,433)	(0.9)	(99.1)	(6,157.1)	(1.4)	(92.2)
Total		165,196	100.0	98.3	441,457.4	100.0	89.2

【Corporations researched: 227】

Leasing Volume by Type of Equipment

(Apr. 2011 - Sep. 2011)

		Leasing cases	Component Ratio (%)	Yearly Change (%)	Leasing Volume (in million yen)	Component Ratio (%)	Yearly Change (%)
1	Information and Communication Equipment	390,655	42.4	92.8	729,200.0	34.0	97.5
	Computer Hardware	(220,353)	(23.9)	(100.6)	(359,651.4)	(16.8)	(88.9)
	Computer Software	(63,920)	(6.9)	(76.7)	(188,205.5)	(8.8)	(105.2)
	Telecommunication Equipment	(106,382)	(11.5)	(89.7)	(181,343.1)	(8.4)	(110.4)
2	Office Equipment	173,616	18.8	95.3	209,364.3	9.8	92.3
3	Industrial Equipment	20,750	2.3	51.2	243,144.0	11.3	92.9
4	Factory Equipment	2,998	0.3	110.3	50,873.7	2.4	117.6
5	Construction Equipment	5,544	0.6	115.9	49,792.0	2.3	122.7
6	Transport Equipment	82,680	9.0	93.8	235,394.8	11.0	91.0
	Automobile	(74,913)	(8.1)	(95.1)	(197,679.6)	(9.2)	(94.7)
	Vessel	(37)	(0.0)	(94.9)	(899.9)	(0.0)	(24.2)
7	Medical Equipment	28,422	3.1	102.5	128,196.2	6.0	92.2
8	Commercial and Service Equipment	127,807	13.9	92.8	312,492.5	14.6	95.7
	Commercial Equipment	(87,922)	(9.5)	(83.4)	(197,741.3)	(9.2)	(101.1)
9	Others	89,092	9.7	136.2	187,811.3	8.8	95.9
	Physical and Chemical Equipment	(7,754)	(0.8)	(87.0)	(26,825.2)	(1.2)	(98.8)
Total		921,564	100.0	95.0	2,146,268.8	100.0	95.8

Changes in Lease Transaction Volume

Unit: in 100 Million Yen, Yearly Changes: Parenthesized

	Total	Information and Communication Equipment				Office Equipment	Industry Equipment	Factory Equipment	Construction Equipment	Transport Equipment			Medical Equipment	Commercial and Service Equipment		Others		
		Computer Hardware	Computer Software	Telecommunication Equipment	Automobile					Vessel	Commercial Equipment	Physical and Chemical Equipment						
Calendar Year	2008	64,027 (▲ 13.8)	21,058 (▲ 11.1)	11,113 (▲ 11.5)	5,610 (▲ 7.8)	4,336 (▲ 14.0)	5,682 (▲ 16.8)	8,602 (▲ 17.3)	2,227 (▲ 15.6)	1,795 (▲ 5.2)	7,111 (▲ 9.3)	5,502 (▲ 16.0)	15 (▲ 21.2)	3,161 (▲ 9.1)	8,521 (▲ 21.5)	4,808 (▲ 18.2)	5,870 (▲ 11.2)	862 (▲ 0.4)
	2009	51,376 (▲ 19.8)	17,326 (▲ 17.7)	8,953 (▲ 19.4)	4,751 (▲ 15.3)	3,622 (▲ 16.5)	4,401 (▲ 22.6)	6,992 (▲ 18.7)	1,685 (▲ 24.3)	1,099 (▲ 38.8)	5,112 (▲ 28.1)	4,044 (▲ 26.5)	22 (▲ 48.4)	2,805 (▲ 11.3)	7,130 (▲ 16.3)	3,901 (▲ 18.9)	4,825 (▲ 17.8)	604 (▲ 29.9)
	2010	46,359 (▲ 9.8)	16,278 (▲ 6.0)	8,550 (▲ 4.5)	3,986 (▲ 16.1)	3,743 (▲ 3.3)	4,336 (▲ 1.5)	5,217 (▲ 25.4)	874 (▲ 48.1)	933 (▲ 15.1)	5,150 (▲ 0.7)	4,107 (▲ 1.5)	66 (▲ 193.8)	2,614 (▲ 6.8)	6,483 (▲ 9.1)	3,858 (▲ 1.1)	4,473 (▲ 7.3)	585 (▲ 3.1)
Fiscal Year (Final Figures)	2008	60,564 (▲ 15.3)	19,877 (▲ 12.6)	10,306 (▲ 14.5)	5,496 (▲ 8.0)	4,075 (▲ 13.7)	5,254 (▲ 20.2)	7,935 (▲ 21.4)	2,488 (▲ 1.7)	1,714 (▲ 7.5)	6,306 (▲ 19.6)	4,960 (▲ 17.6)	93 (▲ 305.7)	3,037 (▲ 11.3)	8,300 (▲ 17.1)	4,599 (▲ 17.2)	5,653 (▲ 12.3)	771 (▲ 31.0)
	2009	49,219 (▲ 18.7)	16,968 (▲ 14.6)	8,644 (▲ 16.1)	4,532 (▲ 17.5)	3,792 (▲ 6.9)	4,312 (▲ 17.9)	6,485 (▲ 18.3)	1,006 (▲ 59.6)	1,036 (▲ 39.5)	4,970 (▲ 21.2)	4,088 (▲ 17.6)	49 (▲ 47.3)	2,641 (▲ 13.0)	6,829 (▲ 17.7)	3,993 (▲ 13.2)	4,973 (▲ 12.0)	588 (▲ 23.8)
	2010	45,553 (▲ 7.4)	16,460 (▲ 3.0)	8,778 (▲ 1.5)	3,827 (▲ 15.6)	3,855 (▲ 1.7)	4,335 (▲ 0.5)	4,849 (▲ 25.2)	957 (▲ 4.8)	905 (▲ 12.7)	4,930 (▲ 0.8)	4,037 (▲ 1.3)	40 (▲ 18.7)	2,557 (▲ 3.2)	6,417 (▲ 6.0)	3,821 (▲ 4.3)	4,143 (▲ 16.7)	612 (▲ 4.0)
Half Year	10-3	24,461 (▲ 17.5)	8,817 (▲ 11.7)	4,534 (▲ 13.9)	2,284 (▲ 16.1)	1,999 (▲ 0.1)	2,089 (▲ 11.5)	2,981 (▲ 23.5)	463 (▲ 67.8)	555 (▲ 27.6)	2,597 (▲ 17.1)	2,123 (▲ 5.9)	30 (▲ 274.2)	1,236 (▲ 13.8)	3,237 (▲ 19.4)	1,884 (▲ 9.2)	2,485 (▲ 5.2)	297 (▲ 17.6)
	'10 4-9	22,398 (▲ 9.4)	7,477 (▲ 7.9)	4,045 (▲ 2.4)	1,789 (▲ 18.7)	1,643 (▲ 7.2)	2,267 (▲ 3.1)	2,616 (▲ 21.6)	433 (▲ 23.6)	406 (▲ 18.1)	2,586 (▲ 7.8)	2,087 (▲ 5.6)	37 (▲ 93.0)	1,390 (▲ 3.6)	3,264 (▲ 9.3)	1,956 (▲ 1.7)	1,959 (▲ 23.4)	271 (▲ 6.9)
	10-3	23,064 (▲ 5.7)	8,614 (▲ 2.3)	4,425 (▲ 2.4)	2,030 (▲ 11.1)	2,160 (▲ 8.0)	2,079 (▲ 0.5)	2,255 (▲ 24.3)	519 (▲ 12.0)	513 (▲ 7.7)	2,481 (▲ 4.5)	2,049 (▲ 3.5)	4 (▲ 87.2)	1,217 (▲ 1.6)	3,161 (▲ 2.3)	1,864 (▲ 1.0)	2,225 (▲ 10.5)	334 (▲ 12.7)
	'11 4-9	21,463 (▲ 4.2)	7,292 (▲ 2.5)	3,597 (▲ 11.1)	1,882 (▲ 5.2)	1,813 (▲ 10.4)	2,094 (▲ 7.7)	2,431 (▲ 7.1)	509 (▲ 17.6)	498 (▲ 22.7)	2,354 (▲ 9.0)	1,977 (▲ 5.3)	9 (▲ 75.8)	1,282 (▲ 7.8)	3,125 (▲ 4.3)	1,977 (▲ 1.1)	1,878 (▲ 4.1)	268 (▲ 1.2)
Quarter Year	10-12	11,376 (▲ 20.8)	3,803 (▲ 16.9)	1,993 (▲ 18.7)	1,001 (▲ 14.5)	810 (▲ 15.2)	1,032 (▲ 13.3)	1,493 (▲ 14.1)	230 (▲ 58.1)	318 (▲ 34.1)	1,233 (▲ 25.3)	1,059 (▲ 15.1)	2 (▲ 65.9)	621 (▲ 10.3)	1,640 (▲ 22.9)	962 (▲ 14.6)	1,007 (▲ 26.1)	143 (▲ 24.8)
	1-3	13,085 (▲ 14.4)	5,014 (▲ 7.3)	2,541 (▲ 9.7)	1,284 (▲ 17.3)	1,189 (▲ 14.2)	1,058 (▲ 9.7)	1,488 (▲ 31.1)	234 (▲ 73.7)	238 (▲ 16.8)	1,365 (▲ 7.8)	1,064 (▲ 5.5)	28 (▲ 3,553.9)	615 (▲ 17.1)	1,597 (▲ 15.6)	922 (▲ 2.9)	1,478 (▲ 17.4)	154 (▲ 9.5)
	'10 4-6	11,044 (▲ 12.2)	3,607 (▲ 9.6)	1,884 (▲ 6.1)	925 (▲ 19.4)	798 (▲ 4.4)	1,130 (▲ 1.7)	1,436 (▲ 9.8)	195 (▲ 44.2)	188 (▲ 35.0)	1,249 (▲ 2.8)	1,011 (▲ 4.4)	4 (▲ 19.5)	704 (▲ 10.9)	1,583 (▲ 18.0)	959 (▲ 7.5)	951 (▲ 25.3)	119 (▲ 16.7)
	7-9	11,355 (▲ 6.4)	3,870 (▲ 6.2)	2,162 (▲ 1.1)	863 (▲ 17.9)	845 (▲ 9.7)	1,137 (▲ 8.5)	1,180 (▲ 32.4)	238 (▲ 9.7)	217 (▲ 5.6)	1,338 (▲ 13.0)	1,076 (▲ 6.7)	33 (▲ 133.9)	686 (▲ 5.2)	1,681 (▲ 0.8)	997 (▲ 4.6)	1,008 (▲ 21.7)	152 (▲ 2.6)
	10-12	10,875 (▲ 4.4)	3,788 (▲ 0.4)	1,963 (▲ 1.5)	914 (▲ 8.7)	911 (▲ 12.5)	1,011 (▲ 2.0)	1,113 (▲ 25.4)	208 (▲ 9.5)	289 (▲ 9.0)	1,199 (▲ 2.8)	955 (▲ 9.8)	1 (▲ 49.5)	609 (▲ 1.9)	1,621 (▲ 1.1)	980 (▲ 1.8)	1,036 (▲ 2.8)	160 (▲ 12.1)
	1-3	12,189 (▲ 6.8)	4,826 (▲ 3.7)	2,461 (▲ 3.1)	1,116 (▲ 13.0)	1,249 (▲ 5.0)	1,068 (▲ 1.0)	1,142 (▲ 23.2)	311 (▲ 33.2)	223 (▲ 6.0)	1,282 (▲ 6.1)	1,094 (▲ 2.8)	3 (▲ 90.6)	608 (▲ 1.2)	1,540 (▲ 3.6)	885 (▲ 4.0)	1,189 (▲ 19.5)	174 (▲ 13.3)
	'11 4-6	10,631 (▲ 3.7)	3,559 (▲ 1.3)	1,739 (▲ 7.7)	982 (▲ 6.1)	838 (▲ 5.0)	1,066 (▲ 5.7)	1,455 (▲ 1.3)	253 (▲ 30.1)	208 (▲ 10.7)	969 (▲ 22.4)	800 (▲ 20.9)	4 (▲ 7.9)	633 (▲ 10.1)	1,525 (▲ 3.7)	991 (▲ 3.3)	963 (▲ 1.2)	127 (▲ 6.6)
	7-9	10,831 (▲ 4.6)	3,733 (▲ 3.5)	1,857 (▲ 14.1)	900 (▲ 4.2)	975 (▲ 15.5)	1,028 (▲ 9.6)	976 (▲ 17.3)	255 (▲ 7.4)	289 (▲ 33.2)	1,385 (▲ 3.5)	1,177 (▲ 9.4)	5 (▲ 84.2)	649 (▲ 5.3)	1,600 (▲ 4.8)	987 (▲ 1.0)	915 (▲ 9.2)	141 (▲ 7.2)
Monthly	'10 9	4,947 (▲ 2.6)	1,789 (▲ 3.9)	1,041 (▲ 26.4)	424 (▲ 15.7)	324 (▲ 18.0)	432 (▲ 7.2)	563 (▲ 27.6)	117 (▲ 16.7)	105 (▲ 27.1)	524 (▲ 11.4)	417 (▲ 3.3)	26 (▲ 2,097.0)	279 (▲ 2.8)	599 (▲ 3.8)	351 (▲ 6.8)	540 (▲ 44.1)	67 (▲ 30.4)
	10	3,766 (▲ 7.6)	1,355 (▲ 8.5)	738 (▲ 10.6)	349 (▲ 11.1)	268 (▲ 2.0)	332 (▲ 7.3)	427 (▲ 19.5)	67 (▲ 21.0)	85 (▲ 37.4)	394 (▲ 3.6)	307 (▲ 10.8)	0 (▲ 99.2)	205 (▲ 8.7)	482 (▲ 2.3)	312 (▲ 8.7)	418 (▲ 9.7)	56 (▲ 21.3)
	11	3,107 (▲ 6.0)	1,125 (▲ 0.5)	551 (▲ 4.7)	259 (▲ 10.7)	316 (▲ 19.9)	313 (▲ 2.5)	301 (▲ 12.2)	53 (▲ 0.6)	89 (▲ 13.8)	369 (▲ 13.9)	311 (▲ 15.7)	1 (▲ 3,142.1)	164 (▲ 11.7)	470 (▲ 6.1)	309 (▲ 5.5)	223 (▲ 20.2)	49 (▲ 6.9)
	12	4,002 (▲ 0.2)	1,308 (▲ 9.7)	675 (▲ 14.4)	306 (▲ 3.9)	327 (▲ 15.2)	367 (▲ 0.5)	385 (▲ 37.9)	88 (▲ 4.7)	115 (▲ 11.2)	436 (▲ 10.3)	337 (▲ 2.4)	1 (▲ 52.8)	239 (▲ 14.1)	670 (▲ 0.3)	359 (▲ 6.1)	394 (▲ 13.9)	56 (▲ 25.1)
	'11 1	3,356 (▲ 7.0)	1,536 (▲ 16.3)	811 (▲ 14.4)	334 (▲ 13.5)	392 (▲ 73.5)	283 (▲ 0.3)	281 (▲ 1.1)	77 (▲ 56.5)	65 (▲ 24.5)	282 (▲ 3.3)	255 (▲ 7.8)	0 (▲ 100.0)	172 (▲ 21.7)	402 (▲ 10.3)	226 (▲ 3.0)	258 (▲ 9.4)	36 (▲ 4.9)
	2	3,193 (▲ 10.0)	1,272 (▲ 6.8)	604 (▲ 3.3)	246 (▲ 5.8)	422 (▲ 11.9)	314 (▲ 7.1)	299 (▲ 29.6)	77 (▲ 81.1)	74 (▲ 3.9)	361 (▲ 7.0)	296 (▲ 3.0)	1 (▲ 50.4)	144 (▲ 13.4)	385 (▲ 2.6)	242 (▲ 0.3)	267 (▲ 41.2)	39 (▲ 8.5)
	3	5,640 (▲ 11.9)	2,018 (▲ 13.3)	1,047 (▲ 13.3)	536 (▲ 15.7)	435 (▲ 10.1)	470 (▲ 2.1)	562 (▲ 27.9)	158 (▲ 10.9)	84 (▲ 26.1)	639 (▲ 15.3)	543 (▲ 3.8)	2 (▲ 92.7)	292 (▲ 5.2)	753 (▲ 0.1)	416 (▲ 6.9)	664 (▲ 10.2)	99 (▲ 24.0)
	4	4,225 (▲ 1.0)	1,383 (▲ 7.7)	714 (▲ 11.4)	389 (▲ 8.0)	281 (▲ 4.0)	400 (▲ 5.1)	833 (▲ 60.5)	88 (▲ 16.7)	70 (▲ 1.9)	337 (▲ 15.0)	267 (▲ 22.2)	1 (▲ 59.3)	232 (▲ 12.5)	555 (▲ 3.8)	351 (▲ 5.5)	346 (▲ 8.2)	45 (▲ 2.0)
	5	2,933 (▲ 13.9)	1,006 (▲ 0.3)	520 (▲ 1.2)	257 (▲ 6.5)	229 (▲ 2.7)	300 (▲ 2.0)	294 (▲ 48.2)	76 (▲ 14.0)	60 (▲ 27.2)	239 (▲ 39.2)	205 (▲ 31.4)	1 (▲ 43.3)	198 (▲ 5.4)	476 (▲ 4.0)	315 (▲ 2.6)	283 (▲ 11.0)	39 (▲ 16.3)
	6	3,473 (▲ 0.6)	1,170 (▲ 5.8)	505 (▲ 8.4)	336 (▲ 28.7)	329 (▲ 12.1)	366 (▲ 9.1)	328 (▲ 6.4)	109 (▲ 56.5)	78 (▲ 12.3)	392 (▲ 14.5)	327 (▲ 11.1)	2 (▲ 165.1)	203 (▲ 11.7)	494 (▲ 3.3)	324 (▲ 1.7)	334 (▲ 30.2)	43 (▲ 3.6)
	7	3,192 (▲ 3.6)	974 (▲ 8.4)	468 (▲ 19.9)	243 (▲ 4.7)	263 (▲ 6.7)	324 (▲ 17.7)	268 (▲ 17.2)	71 (▲ 27.2)	80 (▲ 45.0)	462 (▲ 4.1)	350 (▲ 4.4)	1 (▲ 33.4)	178 (▲ 11.5)	536 (▲ 0.3)	328 (▲ 7.8)	300 (▲ 23.9)	38 (▲ 12.8)
	8	3,224 (▲ 4.2)	1,076 (▲ 5.7)	569 (▲ 6.1)	258 (▲ 25.0)	248 (▲ 9.4)	302 (▲ 3.4)	299 (▲ 2.2)	82 (▲ 26.9)	79 (▲ 37.2)	398 (▲ 7.4)	365 (▲ 12.7)	1 (▲ 88.0)	205 (▲ 0.8)	484 (▲ 11.8)	309 (▲ 9.3)	300 (▲ 33.2)	41 (▲ 0.5)
	9	4,415 (▲ 10.8)	1,683 (▲ 6.0)	820 (▲ 21.2)	398 (▲ 6.1)	464 (▲ 43.2)	402 (▲ 6.8)	409 (▲ 27.4)	102 (▲ 12.8)	130 (▲ 24.7)	526 (▲ 0.4)	462 (▲ 10.8)	3 (▲ 87.9)	267 (▲ 4.3)	580 (▲ 3.1)	349 (▲ 0.7)	315 (▲ 41.7)	62 (▲ 7.8)