

Lease Statistics (FY 2007)

◆ Outline

The total lease transaction volume in FY 2007 is 7,154.2 billion yen, decreased by 9.1%, compared with the volume in FY 2006 <corporations researched: 248>.

Leasing percentage to total private capital investment is 7.84%, and this indicates that approximate 8% of the private capital investment is occupied by lease.

With respect to type of equipment, Construction Equipment has showed positive growth in a row of 2 years, while Information and Communication Equipment has showed negative growth in a row of 3 years. In regard to type of Lessee's size, the volume of "Small and Medium sized Companies" has turned to negative growth, and that of "Large Companies" has showed negative growth in a row of 2 years. In regard with type of Business, "Manufacturing Sector" has showed negative growth in a row of 2 years and "Non-Manufacturing Sector" has turned to negative growth.

◆ Leasing Percentage

Leasing Percentage (ratio of leasing capital investment to the total private capital investment) in FY 2007 is 7.84%, which indicates a slight reduction. Leasing, however, plays a role of approximate 8 % of the total private capital investment.

◆ Lease Transaction Volume by Type of Equipment

Construction Equipment (0.3% up) has showed a slight increase. On the other hand, Information and Communication Equipment (11.3% down) has showed negative growth in a row of 3 years. Medical Equipment (11.9% down), and Commercial and Service Equipment (16.9% down) have showed double-digit decreases respectively. Factory Equipment (9.2% down), which had showed a double-digit increase in a row of 4 years, has turned to negative growth. Office Equipment (9.5% down), Industrial Equipment (7.2% down), Transport Equipment (4.1% down) have respectively turned to negative growth.

◆ Lease Transaction Volume by Size of Lessee and Lessee's Business Type

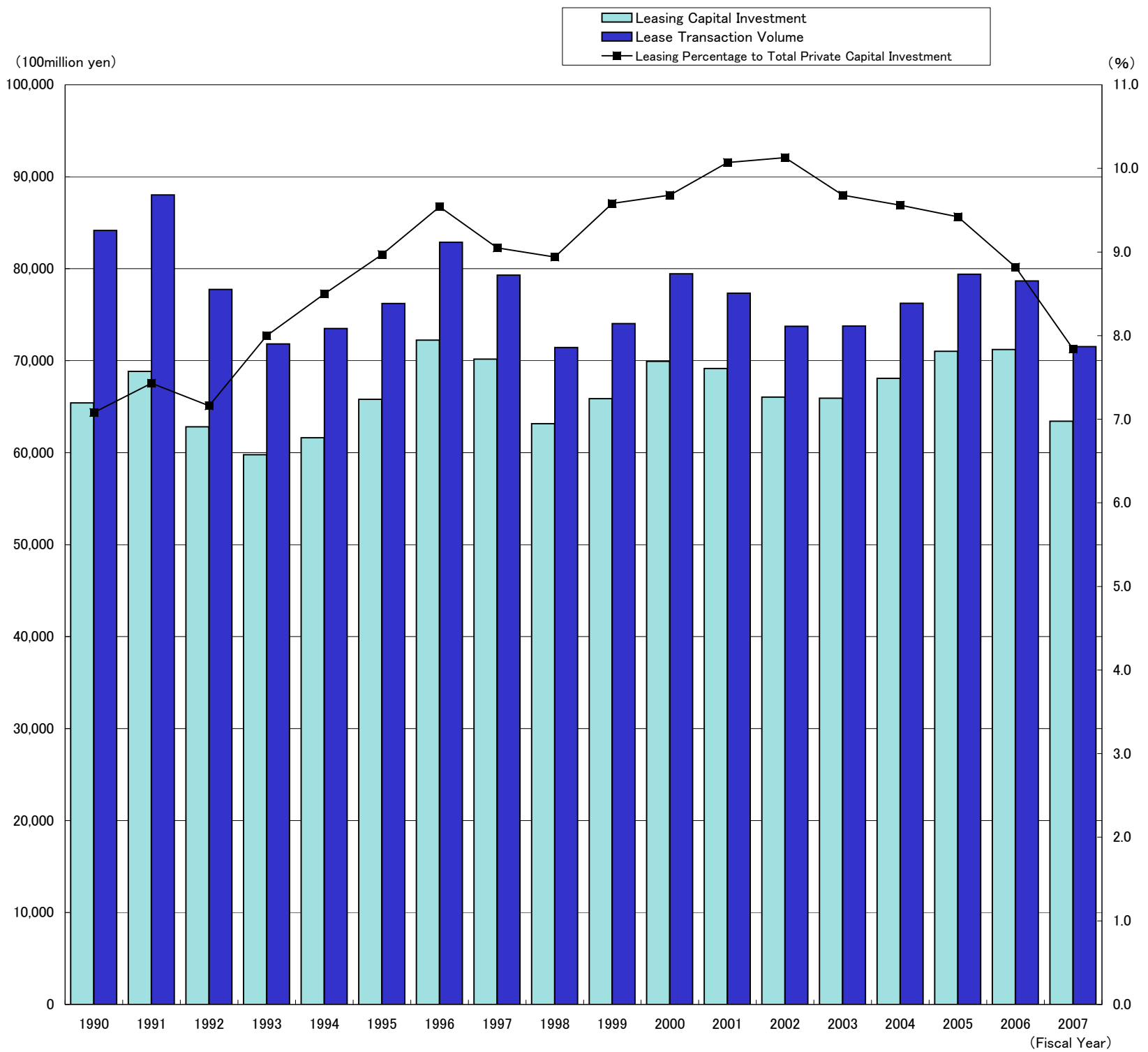
"Small and Medium Sized Companies" (companies with capital 0.1 billion yen and less or solo proprietors) has showed turned to negative growth (12.2% down), and "Large Companies" (companies with capital over 0.1 billion yen) has showed negative growth in a row of 2 years (6.3% down). The component ratio of "Small and Medium Sized Companies" is 48.5%, and that of "Large Companies" is 45.9%. The share of "Small and Medium Sized Companies" has exceeded that of "Large Companies" in a row of 4 years since FY 2004.

"Non-Manufacturing Sector" (12.2% down) has turned to negative growth, while "Manufacturing Sector" (4.4% down) has showed negative growth in a row of 2 years. With regard to "Non-Manufacturing Sector", "Electricity, Gas, Heat, Water" (30.6% up) has showed a notable increase, while "Wholesale and Retail" (11.0% down), "Financing and Insurance" (19.1 down), "Real Estate" (24.9% down), and "Other Service" (16.3% down) have respectively showed double-digit decreases. With regard to "Manufacturing Sector", "Textile, Wood, Pulp" (3.7% up), and "Chemical, Oil, Plastic Product" (0.9% up) have respectively turned to positive growth. "General, Electrical, Communication, Transport Machinery" (4.1 % down), which has the largest share of the lease transaction volume, has showed negative growth in a row of 2 years.

Lease Statistics (April 2008)

Lease transaction volume in April 2008 is 606.3 billion yen, decreased by 7.4%. The lease transaction volume has been on the decrease in a row of 11 months. Construction Equipment (14.6% up) has showed a double-digit increase, while Information and Communication Equipment (6.7% down), Office Equipment (15.4% down), Industrial Equipment (16.3% down), Factory Equipment (13.5% down), and Transport Equipment (9.0% down) have respectively showed negative growth.

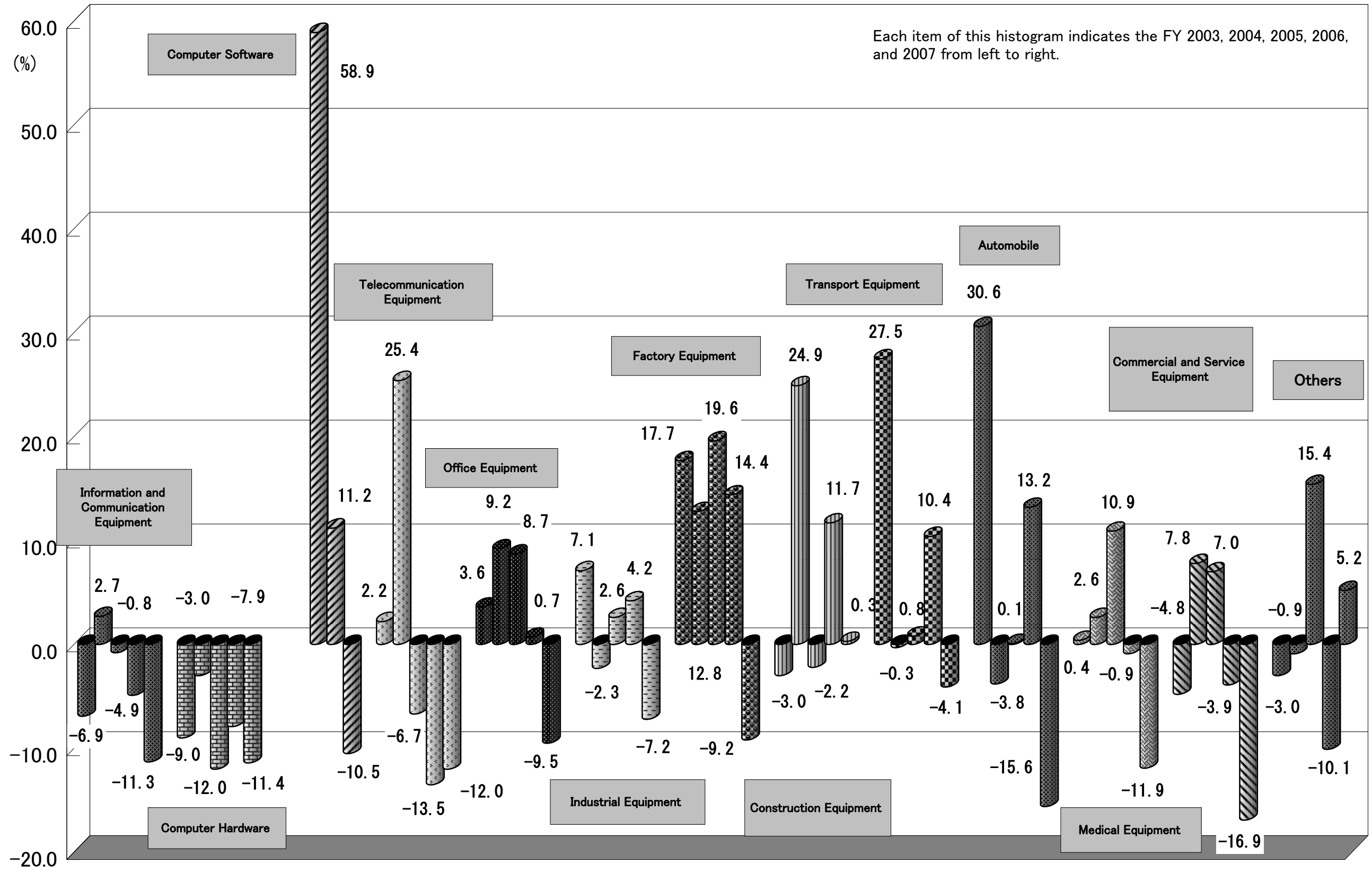
Trends in Lease Transaction Volume, Leasing Capital Investment and Leasing Percentage to Total Private Capital Investment



Fiscal Year	1990	1991	1992	1993	1994	1995	1996	1997	1998	1999	2000	2001	2002	2003	2004	2005	2006	2007
Lease Transaction Volume (100million yen)	84,152	88,016	77,742	71,825	73,497	76,214	82,867	79,304	71,445	74,024	79,457	77,337	73,743	73,778	76,252	79,413	78,677	71,542
Yearly Change (%)	119.1	104.6	88.3	92.4	102.3	103.7	108.7	95.7	90.1	103.6	107.3	97.3	95.4	100.0	103.4	104.1	99.1	90.9
Leasing Capital investment (100 million yen)	65,420	68,843	62,813	59,780	61,631	65,804	72,238	70,180	63,150	65,862	69,922	69,148	66,052	65,917	68,086	71,017	71,213	63,420
Yearly Change (%)	113.7	105.2	91.2	95.2	103.1	106.8	109.8	97.2	90.0	104.3	106.2	98.9	95.5	99.8	103.3	104.3	100.3	89.1
Leasing Percentage to Total Private Capital Investment(%)	7.08	7.43	7.16	8.00	8.50	8.97	9.54	9.05	8.94	9.58	9.68	10.07	10.13	9.68	9.56	9.42	8.82	7.84
Corporation Reserched	316	324	327	327	335	336	338	344	329	314	304	283	272	262	258	259	258	248

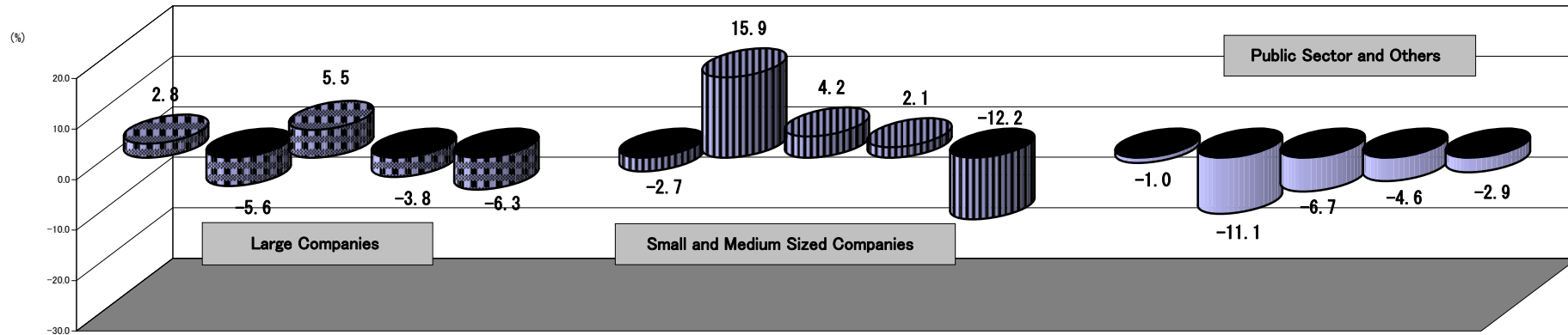
※Total Private Capital Investment, based upon nominal value, is researched by Cabinet Office. The statistic in FY 2007 is preliminary.

Lease Transaction Volume by Type of Equipment - Yearly Change (%)



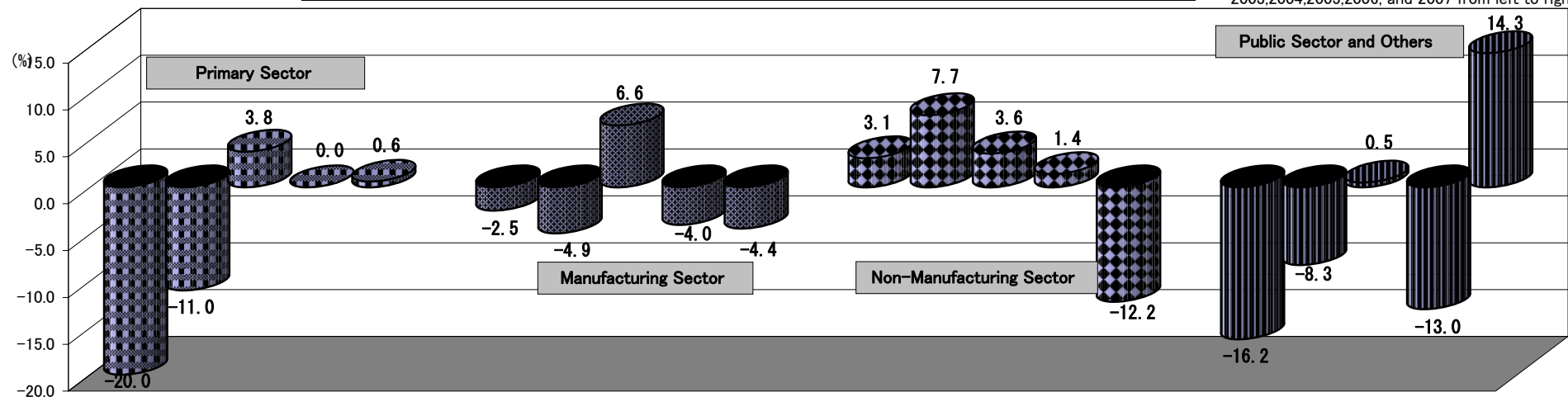
Lease Transaction Volume by Size of Lessee - Yearly Change (%)

Each item of this histogram indicates the FY 2003, 2004, 2005, 2006, and 2007 from left to right.



Lease Transaction Volume by Type of Business of Lessee - Yearly Change (%)

Each item of this histogram indicates the FY 2003, 2004, 2005, 2006, and 2007 from left to right.



(note) The yearly change of Non-Manufacturing Sector in FY 2004 is calculated from the total volume of Non-Manufacturing Sector and Construction Sector.

Manufacturing Sector		Yearly Change(%)
(1) Foods		-2.5
(2) Textile, Wood, Pulp		3.7
(3) Chemical, Oil, Plastic Product		0.9
(4) Iron and Steel, Ferrous and Non-ferrous Metal		-3.4
(5) General, Electrical, Communication, Transport Machinery		-4.1
(6) Others		-14.8

Non-Manufacturing Sector		Yearly Change(%)
(1) Electricity, Gas, Heat, Water		30.6
(2) Information and Communications		-8.0
(3) Transport		0.0
(4) Wholesale and Retail		-11.0
(5) Financing and Insurance		-19.1
(6) Real estate		-24.9
(7) Restaurant, Lodging		-8.9
(8) Medical and Welfare service		-6.6
(9) Other Service		-16.3

Trends in Lease Transaction Volume, Leasing Capital Investment and Leasing Percentage to Total Private Capital Investment

(Unit: 100 million yen, %)

Fiscal Year	Lease Transaction Volume		Leasing Capital Investment		Total Private Capital Investment		Leasing Percentage (B)/(C)
	(A)	Yearly Change	(B)	Yearly Change	(C)	Yearly Change	
1963	7	—	—	—	46,702	—	—
1964	40	571.4	—	—	54,670	117.1	—
1965	67	167.5	—	—	50,883	93.1	—
1966	109	162.7	—	—	65,160	128.1	—
1967	290	266.1	—	—	84,691	130.0	—
1968	450	155.2	—	—	103,499	122.2	—
1969	1,200	266.7	—	—	135,607	131.0	—
1970	2,106	175.5	—	—	156,685	115.5	—
1971	2,793	132.6	—	—	152,967	97.6	—
1972	3,721	133.2	—	—	168,937	110.4	—
1973	5,279	141.9	—	—	224,299	132.8	—
1974	5,290	100.2	—	—	245,518	109.5	—
1975	5,621	106.3	—	—	243,739	99.3	—
1976	8,127	144.6	—	—	256,077	105.1	—
1977	8,604	105.9	—	—	264,534	103.3	—
1978	10,566	122.8	7,820	—	293,354	110.9	2.67
1979	14,611	138.3	10,330	132.2	340,188	116.0	3.04
1980	15,744	107.8	11,550	111.8	396,916	—	2.91
1981	19,327	122.8	14,342	124.2	413,133	104.1	3.47
1982	23,966	124.0	18,872	131.6	420,096	101.7	4.49
1983	29,927	124.9	23,262	123.3	423,719	100.9	5.49
1984	36,758	122.8	28,843	124.0	482,074	113.8	5.98
1985	43,225	117.6	33,520	116.2	540,780	112.2	6.20
1986	47,575	110.1	37,636	112.3	563,666	104.2	6.68
1987	52,967	111.3	42,089	111.8	601,061	106.6	7.00
1988	67,170	126.8	52,226	124.1	715,828	119.1	7.30
1989	70,649	105.2	57,540	110.2	805,375	112.5	7.14
1990	84,152	119.1	65,420	113.7	923,414	114.7	7.08
1991	88,016	104.6	68,843	105.2	926,641	100.3	7.43
1992	77,742	88.3	62,813	91.2	877,558	94.7	7.16
1993	71,825	92.4	59,780	95.2	746,865	85.1	8.00
1994	73,497	102.3	61,631	103.1	725,427	—	8.50
1995	76,214	103.7	65,804	106.8	733,984	101.2	8.97
1996	82,867	108.7	72,238	109.8	762,071	103.8	9.48
1997	79,304	95.7	70,180	97.2	787,681	103.4	8.91
1998	71,445	90.1	63,150	90.0	710,753	90.2	8.88
1999	74,024	103.6	65,862	104.3	690,786	97.2	9.53
2000	79,457	107.3	69,922	106.2	724,526	104.9	9.65
2001	77,337	97.3	69,148	98.9	688,294	95.0	10.05
2002	73,743	95.4	66,052	95.5	651,154	94.6	10.14
2003	73,778	100.0	65,917	99.8	673,970	103.5	9.78
2004	76,252	103.4	68,086	103.3	715,037	106.1	9.52
2005	79,413	104.1	71,017	104.3	762,446	106.6	9.31
2006	78,677	99.1	71,213	100.3	809,635	106.2	8.80
2007	71,542	90.9	63,420	89.1	808,720	99.9	7.84

※ Total Private Capital Investment, based upon nominal value, is researched by the Cabinet Office.

Trends in Lease Transaction Volume by Type of Equipment

(Unit: in 100 million yen)

	FY 2004		FY 2005		FY 2006		FY 2007		Yearly Change				
	Leasing Volume	Component Ratio(%)	Leasing Volume	Component Ratio (%)	Leasing Volume	Component Ratio (%)	Leasing Volume	Component Ratio (%)	04/03	05/04	06/05	07/06	
1	Information and Communication Equipment	27,206	35.7	26,980	34.0	25,650	32.6	22,754	31.8	102.7	99.2	95.1	88.7
	Computer Hardware	16,782	22.0	14,772	18.6	13,611	17.3	12,056	16.9	97.0	88.0	92.1	88.6
	Computer Software	3,780	5.0	6,007	7.6	6,677	8.5	5,976	8.4	—	158.9	111.2	89.5
	Telecommunication Equipment	6,644	8.7	6,201	7.8	5,363	6.8	4,722	6.6	125.4	93.3	86.5	88.0
2	Office Equipment	6,645	8.7	7,223	9.1	7,271	9.2	6,582	9.2	109.2	108.7	100.7	90.5
3	Industrial Equipment	10,176	13.3	10,443	13.1	10,886	13.8	10,099	14.1	97.7	102.6	104.2	92.8
4	Factory Equipment	2,037	2.7	2,436	3.1	2,788	3.5	2,532	3.5	112.8	119.6	114.4	90.8
5	Construction Equipment	1,692	2.2	1,656	2.1	1,849	2.4	1,854	2.6	124.9	97.8	111.7	100.3
6	Transport Equipment	7,342	9.6	7,403	9.3	8,174	10.4	7,841	11.0	99.7	100.8	110.4	95.9
	Automobile	6,289	8.2	6,298	7.9	7,131	9.1	6,022	8.4	96.2	100.1	113.2	84.4
	Vessel	40	0.1	18	0.0	25	0.0	23	0.0	81.5	46.0	136.0	92.0
7	Medical Equipment	3,535	4.6	3,920	4.9	3,885	4.9	3,425	4.8	102.6	110.9	99.1	88.1
8	Commercial and Service Equipment	11,711	15.4	12,533	15.8	12,045	15.3	10,011	14.0	107.8	107.0	96.1	83.1
	Commercial Equipment	6,511	8.5	6,610	8.3	6,073	7.7	5,557	7.8	105.2	101.5	91.9	91.5
9	Others	5,908	7.7	6,819	8.6	6,128	7.8	6,444	9.0	99.1	115.4	89.9	105.2
	Physical and Chemical Equipment	1,035	1.4	850	1.1	934	1.2	1,118	1.6	110.5	82.2	109.8	119.7
Total		76,252	100.0	79,413	100.0	78,677	100.0	71,542	100.0	103.4	104.1	99.1	90.9
Corporations researched		258		259		258		248					

(note) The yearly change 04/03 of "Computer Hardware" is calculated from the total amount of "Computer Hardware" and "Computer Software" in FY 2004.

Trends in Lease Transaction Volume by Size of Lessee

(Unit: in 100 million yen)

	FY 2004		FY 2005		FY 2006		FY 2007		Yearly Change				
	Leasing Volume	Component Ratio(%)	Leasing Volume	Component Ratio (%)	Leasing Volume	Component Ratio (%)	Leasing Volume	Component Ratio (%)	04/03	05/04	06/05	07/06	
1	Large Companies	34,539	45.3	36,437	45.9	35,069	44.6	32,861	45.9	94.4	105.5	96.2	93.7
2	Small and Medium Sized Companies	37,124	48.7	38,695	48.7	39,522	50.2	34,714	48.5	115.9	104.2	102.1	87.8
3	Public Sector and Others	4,589	6.0	4,281	5.4	4,086	5.2	3,968	5.5	88.9	93.3	95.4	97.1
Total		76,252	100.0	79,413	100.0	78,677	100.0	71,542	100.0	103.4	104.1	99.1	90.9

Trends in Lease Transaction Volume by Lessee's Business Type

(Unit: in 100 million yen)

	FY 2004		FY 2005		FY 2006		FY 2007		Yearly Change				
	Leasing Volume	Component Ratio(%)	Leasing Volume	Component Ratio (%)	Leasing Volume	Component Ratio (%)	Leasing Volume	Component Ratio (%)	04/03	05/04	06/05	07/06	
1	Primary Sector	332	0.4	345	0.4	345	0.4	347	0.5	89.0	103.8	100.0	100.6
2	Construction Sector	3,403	4.5	3,541	4.5	3,410	4.3	2,993	4.2	—	104.0	96.3	87.8
3	Manufacturing Sector	18,096	23.7	19,289	24.3	18,507	23.5	17,695	24.7	95.1	106.6	96.0	95.6
	Foods	2,564	3.4	2,527	3.2	2,303	2.9	2,245	3.1	—	98.6	91.1	97.5
	Textile, Wood, Pulp	1,457	1.9	1,809	2.3	1,586	2.0	1,644	2.3	—	124.1	87.7	103.7
	Chemical, Oil, Plastic Product	1,645	2.2	1,784	2.2	1,678	2.1	1,693	2.4	—	108.4	94.1	100.9
	Iron and Steel, Ferrous and Non-ferrous Metal	1,794	2.4	1,953	2.5	1,947	2.5	1,881	2.6	—	108.9	99.7	96.6
	General, Electrical, Communication, Transport Machinery	7,756	10.2	8,358	10.5	8,117	10.3	7,781	10.9	—	107.8	97.1	95.9
	Others	2,880	3.8	2,859	3.6	2,877	3.7	2,451	3.4	—	99.2	100.6	85.2
4	Non-manufacturing Sector	50,271	65.9	52,067	65.6	52,786	67.1	46,361	64.8	107.7	103.6	101.4	87.8
	Electricity, Gas, Heat, Water	716	0.9	546	0.7	568	0.7	742	1.0	—	76.2	104.0	130.6
	Information and Communications	2,757	3.6	3,312	4.2	3,188	4.1	2,932	4.1	—	120.1	96.3	92.0
	Transport	3,139	4.1	3,421	4.3	3,349	4.3	3,349	4.7	—	109.0	97.9	100.0
	Wholesale and Retail	14,101	18.5	14,477	18.2	14,674	18.7	13,065	18.3	—	102.7	101.4	89.0
	Financing and Insurance	3,522	4.6	3,425	4.3	2,910	3.7	2,355	3.3	—	97.3	85.0	80.9
	Real estate	1,670	2.2	1,856	2.3	1,939	2.5	1,456	2.0	—	111.1	104.5	75.1
	Restaurant, Lodging	1,685	2.2	1,952	2.5	1,933	2.5	1,761	2.5	—	115.8	99.0	91.1
	Medical and Welfare Service	3,824	5.0	4,622	5.8	4,395	5.6	4,106	5.7	—	120.9	95.1	93.4
	Other Service	18,857	24.7	18,457	23.2	19,831	25.2	16,596	23.2	—	97.9	107.4	83.7
5	Public Sector and Others	4,150	5.4	4,172	5.3	3,628	4.6	4,146	5.8	91.7	100.5	87.0	114.3
Total		76,252	100.0	79,413	100.0	78,677	100.0	71,542	100.0	103.4	104.1	99.1	90.9

(note) Due to the classification of type of business was changed in FY 2004, the detail of yearly change in FY 2004 is omitted.

The yearly change of Non-Manufacturing Sector in FY 2004 is calculated from the total volume of Non-Manufacturing Sector and Construction Sector.

Leasing Volume by Type of Equipment (Apr. 2008)

		Leasing cases	Component Ratio (%)	Year-on-year Change (%)	Leasing Volume (in million yen)	Component Ratio (%)	Year-on-year Change (%)
1	Information and Communication Equipment	96,912	43.2	92.5	219,750.9	36.2	93.3
	Computer Hardware	(54,775)	(24.4)	(91.6)	(114,921.9)	(19.0)	(83.9)
	Computer Software	(17,230)	(7.7)	(92.1)	(67,397.4)	(11.1)	(117.5)
	Telecommunication Equipment	(24,907)	(11.1)	(94.9)	(37,431.6)	(6.2)	(90.5)
2	Office Equipment	42,023	18.7	88.2	57,745.5	9.5	84.6
3	Industrial Equipment	7,127	3.2	107.4	67,555.0	11.1	83.7
4	Factory Equipment	838	0.4	78.6	16,867.8	2.8	86.5
5	Construction Equipment	1,432	0.6	124.6	14,590.4	2.4	114.6
6	Transport Equipment	20,703	9.2	89.3	58,206.9	9.6	91.0
	Automobile	(18,143)	(8.1)	(83.9)	(43,598.9)	(7.2)	(80.0)
	Vessel	(8)	(0.0)	(200.0)	(16.0)	(0.0)	(2.1)
7	Medical Equipment	7,655	3.4	100.9	31,642.4	5.2	97.7
8	Commercial and Service Equipment	28,116	12.5	86.1	71,514.8	11.8	75.5
	Commercial Equipment	(19,665)	(8.8)	(96.3)	(42,629.4)	(7.0)	(80.1)
9	Others	19,379	8.6	142.2	68,451.8	11.3	146.3
	Physical and Chemical Equipment	(1,682)	(0.8)	(84.4)	(6,564.7)	(1.1)	(99.9)
Total		224,185	100.0	94.1	606,325.5	100.0	92.6

【Corporations researched: 246】

Changes in Lease Transaction Volume

Unit: in 100 Million Yen, Yearly Changes: Parenthesized

	Total	Information and Communication Equipment				Office Equipment	Industry Equipment	Factory Equipment	Construction Equipment	Transport Equipment			Medical Equipment	Commercial and Service Equipment		Others		
		Computer Hardware	Computer Software	Telecommunication Equipment	Automobile					Vessel	Commercial Equipment	Physical and Chemical Equipment						
Calendar Year	2005	77,336 (▲ 2.1)	27,194 (▲ 1.2)	15,800 (▲ 2.1)	4,879 (—)	6,516 (▲ 13.3)	6,034 (▲ 9.9)	10,005 (▲ 6.6)	2,296 (▲ 12.7)	1,621 (▲ 3.2)	7,755 (▲ 5.7)	6,446 (▲ 0.7)	84 (▲ 185.7)	3,800 (▲ 9.5)	12,345 (▲ 8.2)	6,578 (▲ 4.4)	6,285 (▲ 11.2)	911 (▲ 8.3)
	2006	78,076 (▲ 1.0)	25,814 (▲ 5.1)	14,614 (▲ 7.5)	6,020 (▲ 23.4)	5,180 (▲ 20.5)	6,685 (▲ 10.8)	10,588 (▲ 5.8)	2,807 (▲ 22.3)	1,835 (▲ 13.2)	8,185 (▲ 5.5)	7,112 (▲ 10.3)	27 (▲ 67.5)	3,993 (▲ 5.1)	12,062 (▲ 2.3)	6,286 (▲ 4.4)	6,107 (▲ 2.8)	911 (▲ 0.1)
	2007	74,234 (▲ 4.9)	23,686 (▲ 8.2)	12,560 (▲ 14.0)	6,082 (▲ 1.0)	5,044 (▲ 2.6)	6,830 (▲ 2.2)	10,398 (▲ 1.8)	2,640 (▲ 6.0)	1,892 (▲ 3.1)	7,837 (▲ 4.2)	6,547 (▲ 7.9)	19 (▲ 29.7)	3,477 (▲ 12.9)	10,861 (▲ 10.0)	5,874 (▲ 6.6)	6,613 (▲ 8.3)	865 (▲ 5.1)
Fiscal Year (Final Figures)	2005	79,413 (▲ 4.1)	26,980 (▲ 0.8)	14,772 (▲ 12.0)	6,007 (▲ 58.9)	6,201 (▲ 6.7)	7,223 (▲ 8.7)	10,443 (▲ 2.6)	2,436 (▲ 19.6)	1,656 (▲ 2.2)	7,403 (▲ 0.8)	6,298 (▲ 0.1)	18 (▲ 54.0)	3,920 (▲ 10.9)	12,533 (▲ 7.0)	6,610 (▲ 1.5)	6,819 (▲ 15.4)	850 (▲ 17.8)
	2006	78,677 (▲ 0.9)	25,650 (▲ 4.9)	13,611 (▲ 7.9)	6,677 (▲ 11.2)	5,363 (▲ 13.5)	7,271 (▲ 0.7)	10,886 (▲ 4.2)	2,788 (▲ 14.4)	1,849 (▲ 11.7)	8,174 (▲ 10.4)	7,131 (▲ 13.2)	25 (▲ 36.0)	3,885 (▲ 0.9)	12,045 (▲ 3.9)	6,073 (▲ 8.1)	6,128 (▲ 10.1)	934 (▲ 9.8)
	2007	71,542 (▲ 9.1)	22,754 (▲ 11.3)	12,056 (▲ 11.4)	5,976 (▲ 10.5)	4,722 (▲ 12.0)	6,582 (▲ 9.5)	10,099 (▲ 7.2)	2,532 (▲ 9.2)	1,854 (▲ 0.3)	7,841 (▲ 4.1)	6,022 (▲ 15.6)	23 (▲ 8.0)	3,425 (▲ 11.9)	10,011 (▲ 16.9)	5,557 (▲ 8.5)	6,444 (▲ 5.2)	1,118 (▲ 19.7)
Half Year	'06 4-9	38,541 (▲ 0.4)	12,523 (▲ 5.1)	7,014 (▲ 1.8)	2,940 (▲ 0.3)	2,569 (▲ 17.2)	3,246 (▲ 6.6)	5,244 (▲ 2.9)	1,370 (▲ 21.7)	743 (▲ 6.6)	4,160 (▲ 7.9)	3,568 (▲ 9.9)	20 (▲ 68.3)	2,116 (▲ 10.7)	6,116 (▲ 2.7)	3,157 (▲ 6.7)	3,023 (▲ 4.6)	449 (▲ 5.6)
	10-3	40,215 (▲ 1.2)	13,296 (▲ 2.5)	7,192 (▲ 6.6)	3,359 (▲ 11.4)	2,745 (▲ 6.3)	3,639 (▲ 20.3)	5,694 (▲ 5.6)	1,461 (▲ 11.0)	1,117 (▲ 16.6)	4,048 (▲ 0.6)	3,577 (▲ 5.7)	6 (▲ 16.5)	1,838 (▲ 5.1)	5,959 (▲ 3.3)	3,126 (▲ 0.6)	3,162 (▲ 4.0)	449 (▲ 0.7)
	'07 4-9	36,119 (▲ 6.3)	11,068 (▲ 11.6)	5,879 (▲ 16.2)	2,732 (▲ 7.1)	2,457 (▲ 4.3)	3,551 (▲ 9.4)	4,758 (▲ 9.3)	1,293 (▲ 5.6)	833 (▲ 12.1)	3,962 (▲ 4.8)	3,324 (▲ 6.8)	14 (▲ 32.2)	1,787 (▲ 15.5)	5,459 (▲ 10.7)	3,028 (▲ 4.1)	3,408 (▲ 12.7)	406 (▲ 9.6)
	10-3	35,627 (▲ 11.4)	11,772 (▲ 11.5)	6,363 (▲ 11.5)	3,171 (▲ 5.6)	2,238 (▲ 18.5)	3,122 (▲ 14.2)	5,352 (▲ 6.0)	1,235 (▲ 15.5)	1,064 (▲ 4.8)	3,702 (▲ 8.5)	2,790 (▲ 22.0)	8 (▲ 26.4)	1,649 (▲ 10.3)	4,675 (▲ 21.5)	2,607 (▲ 16.6)	3,056 (▲ 3.3)	499 (▲ 11.0)
Quarter Year	'06 4-6	18,321 (▲ 1.5)	6,060 (▲ 8.3)	3,303 (▲ 7.5)	1,522 (▲ 0.2)	1,234 (▲ 18.2)	1,613 (▲ 2.8)	2,275 (▲ 7.2)	630 (▲ 26.2)	312 (▲ 0.1)	1,985 (▲ 10.2)	1,683 (▲ 9.8)	16 (▲ 35.5)	1,087 (▲ 14.8)	2,885 (▲ 9.4)	1,538 (▲ 11.3)	1,474 (▲ 5.8)	215 (▲ 1.2)
	7-9	20,221 (▲ 2.3)	6,463 (▲ 1.8)	3,711 (▲ 4.0)	1,417 (▲ 0.4)	1,335 (▲ 16.3)	1,633 (▲ 10.6)	2,970 (▲ 0.2)	740 (▲ 18.0)	431 (▲ 11.9)	2,175 (▲ 5.9)	1,885 (▲ 9.9)	4 (▲ 91.7)	1,030 (▲ 6.6)	3,231 (▲ 4.2)	1,620 (▲ 1.8)	1,549 (▲ 3.6)	234 (▲ 10.2)
	10-12	19,157 (▲ 1.1)	6,062 (▲ 5.5)	3,378 (▲ 2.8)	1,459 (▲ 4.8)	1,225 (▲ 20.7)	1,916 (▲ 27.6)	2,387 (▲ 2.0)	727 (▲ 19.9)	642 (▲ 26.2)	1,996 (▲ 0.0)	1,760 (▲ 9.9)	4 (▲ 176.0)	922 (▲ 6.2)	3,134 (▲ 6.5)	1,713 (▲ 1.2)	1,371 (▲ 13.3)	225 (▲ 4.8)
	1-3	21,058 (▲ 3.3)	7,234 (▲ 0.1)	3,814 (▲ 9.7)	1,900 (▲ 17.2)	1,520 (▲ 9.6)	1,724 (▲ 13.2)	3,307 (▲ 11.9)	734 (▲ 3.5)	475 (▲ 5.7)	2,052 (▲ 1.1)	1,816 (▲ 1.9)	3 (▲ 35.6)	917 (▲ 4.0)	2,825 (▲ 0.4)	1,413 (▲ 0.2)	1,791 (▲ 4.5)	224 (▲ 5.6)
	'07 4-6	18,145 (▲ 1.0)	5,828 (▲ 3.8)	3,102 (▲ 6.1)	1,390 (▲ 8.7)	1,336 (▲ 8.3)	1,856 (▲ 15.0)	2,248 (▲ 1.2)	593 (▲ 6.0)	365 (▲ 17.2)	1,941 (▲ 2.2)	1,675 (▲ 0.5)	11 (▲ 31.4)	937 (▲ 13.8)	2,703 (▲ 6.3)	1,535 (▲ 0.2)	1,674 (▲ 13.6)	189 (▲ 12.0)
	7-9	17,973 (▲ 11.1)	5,240 (▲ 18.9)	2,777 (▲ 25.2)	1,342 (▲ 5.3)	1,121 (▲ 16.0)	1,695 (▲ 3.8)	2,510 (▲ 15.5)	701 (▲ 5.3)	467 (▲ 8.4)	2,021 (▲ 7.1)	1,650 (▲ 12.5)	3 (▲ 35.0)	850 (▲ 17.4)	2,756 (▲ 14.7)	1,493 (▲ 7.9)	1,734 (▲ 11.9)	216 (▲ 7.4)
	10-12	17,058 (▲ 11.0)	5,384 (▲ 11.2)	2,868 (▲ 15.1)	1,450 (▲ 0.6)	1,066 (▲ 13.0)	1,556 (▲ 18.8)	2,333 (▲ 2.3)	612 (▲ 15.8)	584 (▲ 9.0)	1,823 (▲ 8.7)	1,406 (▲ 20.1)	3 (▲ 9.4)	773 (▲ 16.1)	2,577 (▲ 17.8)	1,433 (▲ 16.4)	1,415 (▲ 3.2)	235 (▲ 4.4)
	1-3	18,569 (▲ 11.8)	6,388 (▲ 11.7)	3,496 (▲ 8.4)	1,720 (▲ 9.4)	1,172 (▲ 22.9)	1,566 (▲ 9.1)	3,019 (▲ 8.7)	622 (▲ 15.2)	479 (▲ 0.9)	1,879 (▲ 8.5)	1,384 (▲ 23.8)	4 (▲ 76.3)	876 (▲ 4.4)	2,098 (▲ 25.7)	1,174 (▲ 16.9)	1,642 (▲ 8.3)	264 (▲ 17.6)
Monthly	'07 4	6,546 (▲ 3.9)	2,356 (▲ 5.4)	1,369 (▲ 0.1)	573 (▲ 15.4)	414 (▲ 7.2)	682 (▲ 0.2)	807 (▲ 10.9)	195 (▲ 11.6)	127 (▲ 23.4)	640 (▲ 2.3)	545 (▲ 4.6)	8 (▲ 63.5)	324 (▲ 20.4)	947 (▲ 5.1)	532 (▲ 1.8)	468 (▲ 22.0)	66 (▲ 14.1)
	5	5,504 (▲ 5.0)	1,738 (▲ 8.2)	845 (▲ 4.0)	367 (▲ 7.0)	525 (▲ 37.5)	546 (▲ 22.9)	590 (▲ 11.0)	193 (▲ 11.6)	117 (▲ 8.5)	555 (▲ 7.0)	502 (▲ 1.2)	1 (▲ 88.3)	319 (▲ 2.4)	898 (▲ 2.5)	515 (▲ 10.2)	550 (▲ 53.3)	54 (▲ 21.1)
	6	6,094 (▲ 2.8)	1,734 (▲ 11.6)	888 (▲ 15.9)	450 (▲ 10.3)	397 (▲ 2.2)	628 (▲ 29.2)	851 (▲ 3.7)	205 (▲ 13.8)	121 (▲ 20.2)	746 (▲ 2.2)	628 (▲ 5.8)	2 (▲ 309.4)	295 (▲ 16.7)	858 (▲ 11.2)	488 (▲ 7.6)	656 (▲ 27.3)	70 (▲ 0.8)
	7	5,641 (▲ 9.8)	1,621 (▲ 15.5)	816 (▲ 25.5)	390 (▲ 5.7)	416 (▲ 1.2)	583 (▲ 26.7)	686 (▲ 37.1)	223 (▲ 1.5)	129 (▲ 11.3)	685 (▲ 2.1)	584 (▲ 1.8)	1 (▲ 71.4)	256 (▲ 11.4)	925 (▲ 6.6)	509 (▲ 1.0)	534 (▲ 8.1)	71 (▲ 4.6)
	8	5,222 (▲ 11.1)	1,398 (▲ 22.9)	761 (▲ 26.4)	344 (▲ 16.8)	292 (▲ 19.9)	495 (▲ 6.5)	778 (▲ 5.1)	199 (▲ 11.7)	138 (▲ 3.4)	579 (▲ 6.2)	446 (▲ 15.2)	1 (▲ 2,660.0)	249 (▲ 19.3)	875 (▲ 22.9)	486 (▲ 13.6)	511 (▲ 36.5)	66 (▲ 3.0)
	9	7,111 (▲ 12.1)	2,221 (▲ 18.7)	1,200 (▲ 24.2)	608 (▲ 2.9)	413 (▲ 26.0)	617 (▲ 4.1)	1,047 (▲ 8.1)	279 (▲ 3.2)	201 (▲ 10.3)	757 (▲ 14.7)	620 (▲ 18.9)	1 (▲ 12.5)	345 (▲ 20.1)	956 (▲ 13.6)	497 (▲ 10.1)	689 (▲ 1.1)	79 (▲ 13.0)
	10	6,061 (▲ 6.8)	2,024 (▲ 8.7)	1,131 (▲ 8.5)	549 (▲ 2.8)	344 (▲ 17.3)	528 (▲ 18.9)	883 (▲ 15.0)	199 (▲ 13.7)	182 (▲ 9.4)	625 (▲ 2.3)	487 (▲ 14.4)	0 (▲ 80.7)	277 (▲ 15.1)	770 (▲ 12.0)	451 (▲ 10.1)	574 (▲ 3.3)	89 (▲ 17.9)
	11	5,122 (▲ 11.5)	1,542 (▲ 13.3)	775 (▲ 20.8)	422 (▲ 0.9)	345 (▲ 8.1)	489 (▲ 23.4)	684 (▲ 4.7)	189 (▲ 17.2)	190 (▲ 11.9)	600 (▲ 9.6)	461 (▲ 20.5)	2 (▲ 253.7)	230 (▲ 17.3)	796 (▲ 15.8)	479 (▲ 10.7)	402 (▲ 24.3)	68 (▲ 5.8)
	12	5,875 (▲ 14.4)	1,818 (▲ 11.9)	962 (▲ 17.3)	479 (▲ 2.4)	377 (▲ 13.1)	539 (▲ 14.0)	766 (▲ 15.2)	225 (▲ 16.4)	213 (▲ 5.9)	599 (▲ 13.6)	458 (▲ 25.0)	1 (▲ 52.0)	267 (▲ 16.3)	1,011 (▲ 23.0)	503 (▲ 25.5)	439 (▲ 3.3)	77 (▲ 0.9)
	'08 1	4,769 (▲ 15.5)	1,755 (▲ 19.4)	1,019 (▲ 12.0)	454 (▲ 12.0)	282 (▲ 44.1)	429 (▲ 4.3)	592 (▲ 11.5)	179 (▲ 7.9)	138 (▲ 15.5)	418 (▲ 10.8)	224 (▲ 46.4)	0 (▲ 100.0)	236 (▲ 8.2)	630 (▲ 24.6)	366 (▲ 14.6)	392 (▲ 16.0)	51 (▲ 0.6)
	2	4,896 (▲ 11.5)	1,620 (▲ 12.5)	879 (▲ 2.6)	392 (▲ 22.8)	348 (▲ 21.1)	450 (▲ 13.7)	755 (▲ 0.9)	184 (▲ 15.4)	135 (▲ 1.2)	561 (▲ 3.3)	434 (▲ 16.0)	3 (▲ 97.9)	221 (▲ 18.5)	547 (▲ 28.1)	312 (▲ 22.4)	424 (▲ 5.5)	79 (▲ 24.4)
	3	8,904 (▲ 9.9)	3,013 (▲ 5.9)	1,597 (▲ 8.9)	874 (▲ 0.2)	542 (▲ 5.7)	687 (▲ 13.1)	1,673 (▲ 11.5)	260 (▲ 19.4)	207 (▲ 15.6)	899 (▲ 10.3)	726 (▲ 17.7)	2 (▲ 512.2)	419 (▲ 7.8)	920 (▲ 25.0)	497 (▲ 14.8)	825 (▲ 5.7)	133 (▲ 21.6)
	4	6,063 (▲ 7.4)	2,198 (▲ 6.7)	1,149 (▲ 16.1)	674 (▲ 17.5)	374 (▲ 9.5)	577 (▲ 15.4)	676 (▲ 16.3)	169 (▲ 13.5)	146 (▲ 14.6)	582 (▲ 9.0)	436 (▲ 20.0)	0 (▲ 97.9)	316 (▲ 2.3)	715 (▲ 24.5)	426 (▲ 19.9)	685 (▲ 46.3)	66 (▲ 0.1)

(note) The chart shows the transaction volume of Computer Software, distinguishing from that of Computer Hardware since 2005.