

Lease Statistics (FY 2012)

◆ Outline

The total lease transaction volume in FY 2012 is 4,875.4 billion yen, increased by 6.0%, compared with the volume in FY 2011 <corporations researched: 229>.

Leasing percentage to total private capital investment is 7.20%, and this indicates that leasing plays a role of approximate 7% of the total private capital investment.

With respect to type of equipment, Office Equipment, Industrial Equipment, Construction Equipment, Transport Equipment, Medical Equipment, and Commercial and Service Equipment have showed positive growth, while Information and Communication Equipment, and Factory Equipment have showed negative growth respectively. In regard to type of lessee's size, "Large Companies", "Small and Medium sized Companies", and "Public Sector and Others" have showed positive growth. In regard to type of lessee's business, "Non-Manufacturing" has showed positive growth, while "Manufacturing" has tuned to negative growth.

◆ Leasing Percentage

Leasing Percentage (ratio of leasing capital investment to the total private capital investment) in FY 2012 is 7.20%, and leasing plays a role of approximate 7% of the total private capital investment.

◆ Lease Transaction Volume by Type of Equipment

Construction Equipment (25.3% up), and Transport Equipment (19.8% up) have showed a double-digit increase. In addition, Office Equipment (5.9% up), Industrial Equipment (4.0% up), and Commercial and Service Equipment (5.2% up) have also turned to positive growth respectively. Besides, Medical Equipment (4.8% up) has showed positive growth in a row of 2 years. On the other hand, Information and Communication Equipment (0.3% down) has showed negative growth in a row of 8 years, although Computer Hardware (0.8% up) and Computer software (3.9% up) have respectively increased. Factory Equipment (5.3% down) has also showed negative growth.

◆ Lease Transaction Volume by Size of Lessee and Lessee's Business Type

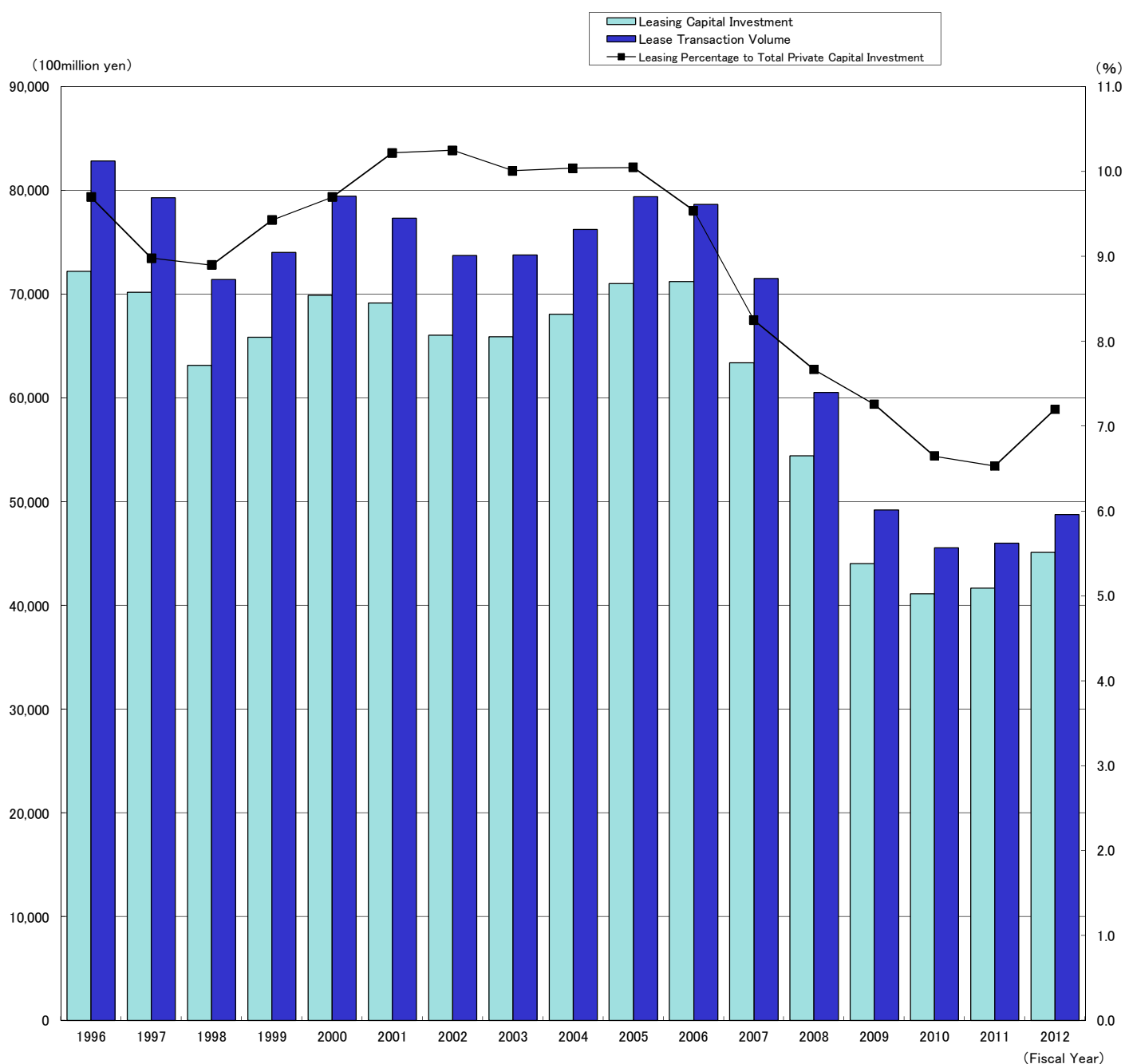
"Large Companies" (companies with capital over 0.1 billion yen) has showed positive growth (10.0% up) for the first time for the last 7 years. In addition, "Small and Medium Sized Companies" (companies with capital 0.1 billion yen and less or solo proprietors) has showed positive growth (2.4% up) since FY 2010. The component ratio of "Small and Medium Sized Companies" is 46.8%, and that of "Large Companies" is 45.0%. The ratio of "Small and Medium Sized Companies" exceeds that of "Large Companies" in a row of 3 years.

"Non-Manufacturing" (6.9% up) has showed positive growth in a row of 2 years, while "Manufacturing" (0.4% down) has turned to slightly negative growth for the first time in 2 years.

Lease Statistics (April 2013)

Lease transaction volume in April 2013 is 419.3 billion yen, decreased by 1.3%. With respect to the type of equipment, Construction Equipment (26.2% up), and Medical Equipment (21.5% up) have respectively showed a double-digit increase. In addition, Office Equipment (4.6% up), and Transport Equipment (3.2% up) have showed positive growth. On the other hand, Information and Communication Equipment (11.5% down), Industrial Equipment (26.0% down), Factory Equipment (17.0% down), and Commercial and Service Equipment (9.7% down) have showed negative growth respectively.

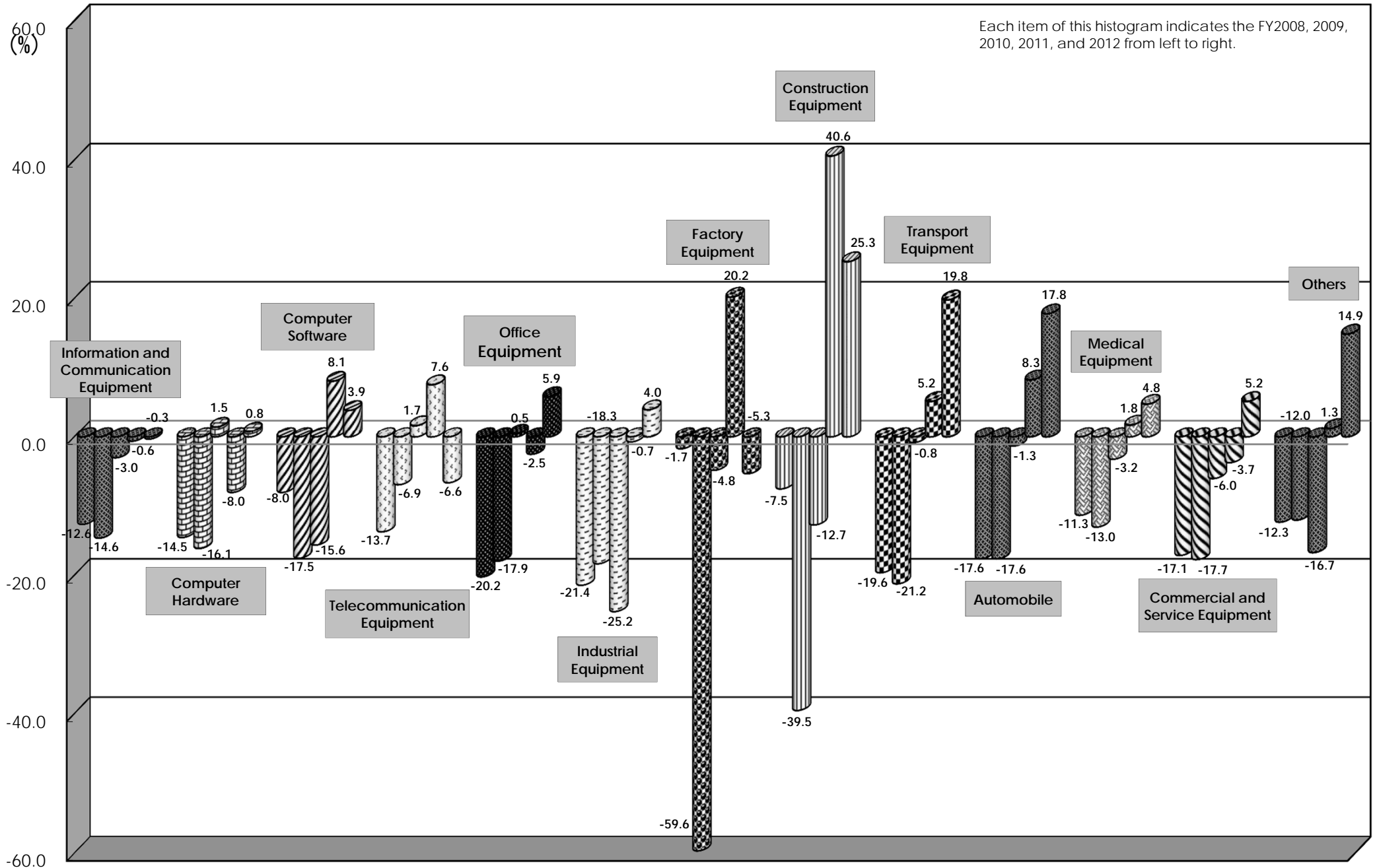
Trends in Lease Transaction Volume, Leasing Capital Investment and Leasing Percentage to Total Private Capital Investment



Fiscal Year	1996	1997	1998	1999	2000	2001	2002	2003	2004	2005	2006	2007	2008	2009	2010	2011	2012
Lease Transaction Volume (100million yen)	82,867	79,304	71,445	74,024	79,457	77,337	73,743	73,778	76,252	79,413	78,677	71,542	60,564	49,219	45,553	45,997	48,754
Yearly Change (%)	108.7	95.7	90.1	103.6	107.3	97.3	95.4	100.0	103.4	104.1	99.1	90.9	84.7	81.3	92.6	101.0	106.0
Leasing Capital investment (100 million yen)	72,238	70,180	63,150	65,862	69,922	69,148	66,052	65,917	68,086	71,017	71,213	63,420	54,444	44,058	41,161	41,682	45,106
Yearly Change (%)	109.8	97.2	90.0	104.3	106.2	98.9	95.5	99.8	103.3	104.3	100.3	89.1	85.8	80.9	93.4	101.3	108.2
Leasing Percentage to Total Private Capital Investment(%)	9.70	8.98	8.90	9.43	9.70	10.22	10.25	10.01	10.04	10.05	9.54	8.25	7.67	7.26	6.65	6.53	7.20
Corporation Reserched	338	344	329	314	304	283	272	262	258	259	258	248	241	233	233	230	229

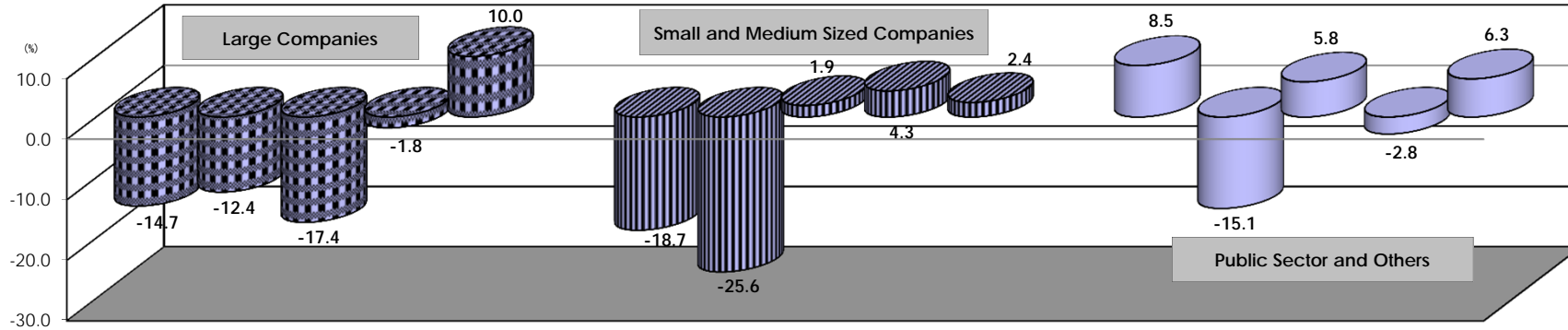
※Total Private Capital Investment, based upon nominal value, is researched by Cabinet Office. The statistic in FY 2012 is preliminary.

Lease Transaction Volume by Type of Equipment - Yearly Change (%)



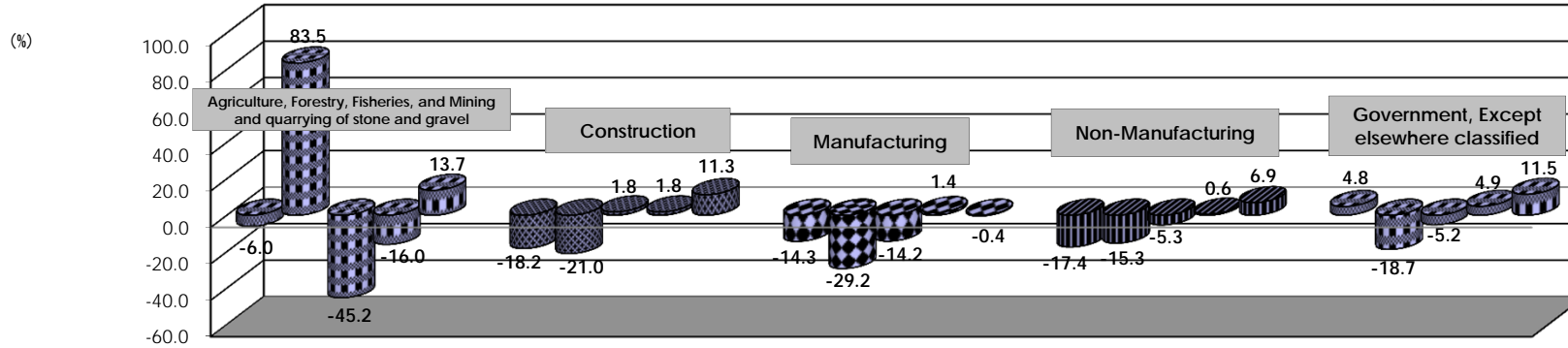
Lease Transaction Volume by Size of Lessee - Yearly Change (%)

Each item of this histogram indicates the FY 2008, 2009, 2010, 2011, and 2012 from left to right.



Lease Transaction Volume by Type of Business of Lessee - Yearly Change (%)

Each item of this histogram indicates the FY 2008, 2009, 2010, 2011, and 2012 from left to right.



Manufacturing		Yearly Change(%)
(1) Manufacture of Food		17.1
(2) Textile mill, Lumber and wood, and Pulp Products		-1.0
(3) Chemical and allied, Petroleum and coal, Plastic Products		4.3
(4) Iron and Steel, Non-ferrous Metal, and Fabricated Metal Products		-5.8
(5) Production, Electrical, Information and Communication, Transportation Machinery		-9.2
(6) Others		8.1

Non-Manufacturing		Yearly Change(%)
(1) Electricity, Gas, Heat supply and Water		89.9
(2) Information and Communications		-8.7
(3) Transport and Postal activities		10.5
(4) Wholesale and Retail trade		5.4
(5) Finance and Insurance		19.9
(6) Real estate, Goods rental, and Leasing		38.3
(7) Accommodations, Eating and drinking services		4.7
(8) Medical, Health care and Welfare		2.6
(9) Services, N.E.C.		0.1

Trends in Lease Transaction Volume, Leasing Capital Investment and Leasing Percentage to Total Private Capital Investment

(Unit: 100 million yen, %)

Fiscal Year	Lease Transaction Volume		Leasing Capital Investment		Total Private Capital Investment		Leasing Percentage (B)/(C)
	(A)	Yearly Change	(B)	Yearly Change	(C)	Yearly Change	
1963	7	—	—	—	46,702	—	—
1964	40	571.4	—	—	54,670	117.1	—
1965	67	167.5	—	—	50,883	93.1	—
1966	109	162.7	—	—	65,160	128.1	—
1967	290	266.1	—	—	84,691	130.0	—
1968	450	155.2	—	—	103,499	122.2	—
1969	1,200	266.7	—	—	135,607	131.0	—
1970	2,106	175.5	—	—	156,685	115.5	—
1971	2,793	132.6	—	—	152,967	97.6	—
1972	3,721	133.2	—	—	168,937	110.4	—
1973	5,279	141.9	—	—	224,299	132.8	—
1974	5,290	100.2	—	—	245,518	109.5	—
1975	5,621	106.3	—	—	243,739	99.3	—
1976	8,127	144.6	—	—	256,077	105.1	—
1977	8,604	105.9	—	—	264,534	103.3	—
1978	10,566	122.8	7,820	—	293,354	110.9	2.67
1979	14,611	138.3	10,330	132.2	340,188	116.0	3.04
1980	15,744	107.8	11,550	111.8	396,807	—	2.91
1981	19,327	122.8	14,342	124.2	413,464	104.2	3.47
1982	23,966	124.0	18,872	131.6	420,013	101.6	4.49
1983	29,927	124.9	23,262	123.3	423,263	100.8	5.50
1984	36,758	122.8	28,843	124.0	477,141	112.7	6.04
1985	43,225	117.6	33,520	116.2	545,560	114.3	6.14
1986	47,575	110.1	37,636	112.3	563,462	103.3	6.68
1987	52,967	111.3	42,089	111.8	600,936	106.7	7.00
1988	67,170	126.8	52,226	124.1	718,103	119.5	7.27
1989	70,649	105.2	57,540	110.2	807,038	112.4	7.13
1990	84,152	119.1	65,420	113.7	920,967	114.1	7.10
1991	88,016	104.6	68,843	105.2	929,323	100.9	7.41
1992	77,742	88.3	62,813	91.2	873,450	94.0	7.19
1993	71,825	92.4	59,780	95.2	751,634	86.1	7.95
1994	73,497	102.3	61,631	103.1	713,874	—	8.63
1995	76,214	103.7	65,804	106.8	722,218	101.2	9.11
1996	82,867	108.7	72,238	109.8	745,079	103.2	9.70
1997	79,304	95.7	70,180	97.2	781,900	104.9	8.98
1998	71,445	90.1	63,150	90.0	709,486	90.7	8.90
1999	74,024	103.6	65,862	104.3	698,279	98.4	9.43
2000	79,457	107.3	69,922	106.2	720,764	103.2	9.70
2001	77,337	97.3	69,148	98.9	676,867	93.9	10.22
2002	73,743	95.4	66,052	95.5	644,187	95.2	10.25
2003	73,778	100.0	65,917	99.8	658,481	102.2	10.01
2004	76,252	103.4	68,086	103.3	678,469	103.0	10.04
2005	79,413	104.1	71,017	104.3	706,357	104.1	10.05
2006	78,677	99.1	71,213	100.3	746,507	105.7	9.54
2007	71,542	90.9	63,420	89.1	768,317	102.9	8.25
2008	60,564	84.7	54,444	85.8	710,147	92.4	7.67
2009	49,219	81.3	44,058	80.9	607,180	85.5	7.26
2010	45,553	92.6	41,161	93.4	618,637	101.9	6.65
2011	45,997	101.0	41,682	101.3	638,090	103.1	6.53
2012	48,754	106.0	45,106	108.2	626,079	98.1	7.20

The statistic in FY 2012 is preliminary (released on May 16).

Trends in Lease Transaction Volume by Type of Equipment

(Unit: in 100 million yen)

	FY 2009		FY 2010		FY 2011		FY 2012		Yearly Change				
	Leasing Volume	Component Ratio(%)	Leasing Volume	Component Ratio (%)	Leasing Volume	Component Ratio (%)	Leasing Volume	Component Ratio (%)	09/08	10/09	11/10	12/11	
1	Information and Communication Equipment	16,968	34.5	16,460	36.1	16,364	35.6	16,316	33.5	85.4	97.0	99.4	99.7
	Computer Hardware	8,644	17.6	8,778	19.3	8,079	17.6	8,147	16.7	83.9	101.5	92.0	100.8
	Computer Software	4,532	9.2	3,827	8.4	4,135	9.0	4,296	8.8	82.5	84.4	108.1	103.9
	Telecommunication Equipment	3,792	7.7	3,855	8.5	4,149	9.0	3,874	7.9	93.1	101.7	107.6	93.4
2	Office Equipment	4,312	8.8	4,335	9.5	4,225	9.2	4,473	9.2	82.1	100.5	97.5	105.9
3	Industrial Equipment	6,485	13.2	4,849	10.6	4,815	10.5	5,007	10.3	81.7	74.8	99.3	104.0
4	Factory Equipment	1,006	2.0	957	2.1	1,150	2.5	1,089	2.2	40.4	95.2	120.2	94.7
5	Construction Equipment	1,036	2.1	905	2.0	1,272	2.8	1,594	3.3	60.5	87.3	140.6	125.3
6	Transport Equipment	4,970	10.1	4,930	10.8	5,189	11.3	6,218	12.8	78.8	99.2	105.2	119.8
	Automobile	4,088	8.3	4,037	8.9	4,373	9.5	5,150	10.6	82.4	98.7	108.3	117.8
	Vessel	49	0.1	40	0.1	31	0.1	101	0.2	52.7	81.3	77.9	324.3
7	Medical Equipment	2,641	5.4	2,557	5.6	2,604	5.7	2,728	5.6	87.0	96.8	101.8	104.8
8	Commercial and Service Equipment	6,829	13.9	6,417	14.1	6,181	13.4	6,504	13.3	82.3	94.0	96.3	105.2
	Commercial Equipment	3,993	8.1	3,821	8.4	3,857	8.4	4,055	8.3	86.8	95.7	100.9	105.1
9	Others	4,973	10.1	4,143	9.1	4,197	9.1	4,824	9.9	88.0	83.3	101.3	114.9
	Physical and Chemical Equipment	588	1.2	612	1.3	572	1.2	596	1.2	76.2	104.0	93.5	104.2
Total		49,219	100.0	45,553	100.0	45,997	100.0	48,754	100.0	81.3	92.6	101.0	106.0
Corporations researched		233		233		230		229					

Trends in Lease Transaction Volume by Size of Lessee

(Unit: in 100 million yen)

		FY 2009		FY 2010		FY 2011		FY 2012		Yearly Change			
		Leasing Volume	Component Ratio(%)	Leasing Volume	Component Ratio (%)	Leasing Volume	Component Ratio (%)	Leasing Volume	Component Ratio (%)	09/08	10/09	11/10	12/11
1	Large Companies	24,569	49.9	20,301	44.6	19,935	43.3	21,921	45.0	87.6	82.6	98.2	110.0
	Listed companies	12,436	25.3	9,870	21.7	10,269	22.3	10,852	22.3	123.4	79.4	104.0	105.7
2	Small and Medium Sized Companies	20,997	42.7	21,388	47.0	22,307	48.5	22,841	46.8	74.4	101.9	104.3	102.4
3	Public Sector and Others	3,653	7.4	3,864	8.5	3,756	8.2	3,993	8.2	84.9	105.8	97.2	106.3
Total		49,219	100.0	45,553	100.0	45,997	100.0	48,754	100.0	81.3	92.6	101.0	106.0

Trends in Lease Transaction Volume by Lessee's Business Type

(Unit: in 100 million yen)

		FY 2009		FY 2010		FY 2011		FY 2012		Yearly Change			
		Leasing Volume	Component Ratio(%)	Leasing Volume	Component Ratio (%)	Leasing Volume	Component Ratio (%)	Leasing Volume	Component Ratio (%)	09/08	10/09	11/10	12/11
1	Agriculture, Forestry, Fisheries, and Mining and quarrying of stone and gravel	598	1.2	328	0.7	276	0.6	313	0.6	183.5	54.8	84.0	113.7
2	Construction	1,933	3.9	1,968	4.3	2,003	4.4	2,229	4.6	79.0	101.8	101.8	111.3
3	Manufacturing	10,746	21.8	9,218	20.2	9,345	20.3	9,311	19.1	70.8	85.8	101.4	99.6
	Manufacture of Food	1,455	3.0	1,413	3.1	1,425	3.1	1,668	3.4	76.8	97.1	100.8	117.1
	Textile mill, Lumber and wood, and Pulp Products	1,527	3.1	927	2.0	810	1.8	801	1.6	96.5	60.7	87.4	99.0
	Chemical and allied, Petroleum and coal, Plastic Products	1,081	2.2	1,008	2.2	940	2.0	980	2.0	63.6	93.3	93.2	104.3
	Iron and Steel, Non-ferrous Metal, and Fabricated Metal Products	1,259	2.6	1,134	2.5	1,122	2.4	1,056	2.2	69.4	90.1	98.9	94.2
	Production, Electrical, Information and Communication, Transportation Machinery	4,046	8.2	3,396	7.5	3,771	8.2	3,424	7.0	65.2	83.9	111.0	90.8
	Others	1,379	2.8	1,340	2.9	1,279	2.8	1,382	2.8	69.9	97.2	95.4	108.1
4	Non-manufacturing	32,412	65.9	30,692	67.4	30,864	67.1	32,987	67.7	84.7	94.7	100.6	106.9
	Electricity, Gas, Heat supply and Water	497	1.0	447	1.0	310	0.7	589	1.2	79.4	89.8	69.5	189.9
	Information and Communications	2,230	4.5	2,361	5.2	2,823	6.1	2,578	5.3	101.0	105.9	119.6	91.3
	Transport and Postal activities	3,242	6.6	2,789	6.1	2,743	6.0	3,032	6.2	96.5	86.0	98.4	110.5
	Wholesale and Retail trade	8,378	17.0	7,906	17.4	8,420	18.3	8,877	18.2	79.3	94.4	106.5	105.4
	Finance and Insurance	1,752	3.6	1,519	3.3	1,118	2.4	1,341	2.7	90.1	86.7	73.6	119.9
	Real estate, Goods rental, and Leasing	3,417	6.9	2,811	6.2	2,554	5.6	3,532	7.2	124.8	82.3	90.9	138.3
	Accommodations, Eating and drinking services	922	1.9	985	2.2	1,031	2.2	1,079	2.2	70.5	106.8	104.7	104.7
	Medical, Health care and Welfare	2,771	5.6	3,142	6.9	3,389	7.4	3,477	7.1	76.2	113.4	107.9	102.6
	Services, N.E.C.	9,202	18.7	8,732	19.2	8,476	18.4	8,483	17.4	77.4	94.9	97.1	100.1
5	Government, Except elsewhere classified	3,531	7.2	3,347	7.3	3,509	7.6	3,914	8.0	81.3	94.8	104.9	111.5
Total		49,219	100.0	45,553	100.0	45,997	100.0	48,754	100.0	81.3	92.6	101.0	106.0

Leasing Volume by Type of Equipment (Apr. 2013)

		Leasing cases	Component Ratio (%)	Year-on-year Change (%)	Leasing Volume (in million yen)	Component Ratio (%)	Year-on-year Change (%)
1	Information and Communication Equipment	81,910	46.8	103.3	143,438.9	34.2	88.5
	Computer Hardware	(46,912)	(26.8)	(104.5)	(74,101.3)	(17.7)	(85.6)
	Computer Software	(11,372)	(6.5)	(77.7)	(44,602.2)	(10.6)	(97.4)
	Telecommunication Equipment	(23,626)	(13.5)	(119.4)	(24,735.4)	(5.9)	(83.1)
2	Office Equipment	35,083	20.0	100.6	43,807.4	10.4	104.6
3	Industrial Equipment	3,039	1.7	13.4	31,830.8	7.6	74.0
4	Factory Equipment	449	0.3	80.0	5,975.8	1.4	83.0
5	Construction Equipment	1,108	0.6	107.7	11,998.4	2.9	126.2
6	Transport Equipment	16,701	9.5	104.8	49,138.4	11.7	103.2
	Automobile	(15,026)	(8.6)	(109.5)	(42,701.4)	(10.2)	(105.9)
	Vessel	(12)	(0.0)	(150.0)	(250.7)	(0.1)	(65.0)
7	Medical Equipment	6,321	3.6	110.3	29,093.4	6.9	121.5
8	Commercial and Service Equipment	20,639	11.8	89.4	55,041.7	13.1	90.3
	Commercial Equipment	(16,303)	(9.3)	(110.4)	(36,260.7)	(8.6)	(95.7)
9	Others	9,773	5.6	94.0	48,977.1	11.7	171.0
	Physical and Chemical Equipment	(1,281)	(0.7)	(98.7)	(5,161.4)	(1.2)	(116.1)
Total		175,023	100.0	90.4	419,301.9	100.0	98.7

【Corporations researched: 221】

Changes in Lease Transaction Volume

Unit: in 100 Million Yen, Yearly Changes: Parenthesized

	Total	Information and Communication Equipment				Office Equipment	Industry Equipment	Factory Equipment	Construction Equipment	Transport Equipment			Medical Equipment	Commercial and Service Equipment		Others		
		Computer Hardware	Computer Software	Telecommunication Equipment	Automobile					Vessel	Commercial Equipment	Physical and Chemical Equipment						
Calendar Year	2010	46,359 (▲ 9.8)	16,278 (▲ 6.0)	8,550 (▲ 4.5)	3,986 (▲ 16.1)	3,743 (▲ 3.3)	4,336 (▲ 1.5)	5,217 (▲ 25.4)	874 (▲ 48.1)	933 (▲ 15.1)	5,150 (▲ 0.7)	4,107 (▲ 1.5)	66 (▲ 193.8)	2,614 (▲ 6.8)	6,483 (▲ 9.1)	3,858 (▲ 1.1)	4,473 (▲ 7.3)	585 (▲ 3.1)
	2011	45,177 (▲ 2.5)	16,188 (▲ 0.6)	7,923 (▲ 7.3)	3,968 (▲ 0.4)	4,297 (▲ 14.8)	4,148 (▲ 4.3)	4,742 (▲ 9.1)	1,121 (▲ 28.3)	1,108 (▲ 18.8)	4,924 (▲ 4.4)	4,208 (▲ 2.5)	17 (▲ 73.6)	2,495 (▲ 4.5)	6,186 (▲ 4.6)	3,770 (▲ 2.3)	4,265 (▲ 4.7)	583 (▲ 0.4)
	2012	48,405 (▲ 7.1)	16,247 (▲ 0.4)	8,191 (▲ 3.4)	4,176 (▲ 5.2)	3,880 (▲ 9.7)	4,501 (▲ 8.5)	4,979 (▲ 5.0)	1,149 (▲ 2.4)	1,477 (▲ 33.3)	6,172 (▲ 25.4)	5,282 (▲ 25.5)	67 (▲ 287.2)	2,768 (▲ 10.9)	6,495 (▲ 5.0)	3,991 (▲ 5.9)	4,616 (▲ 8.2)	619 (▲ 6.2)
Fiscal Year (Final Figures)	2010	45,553 (▲ 7.4)	16,460 (▲ 3.0)	8,778 (▲ 1.5)	3,827 (▲ 15.6)	3,855 (▲ 1.7)	4,335 (▲ 0.5)	4,849 (▲ 25.2)	957 (▲ 4.8)	905 (▲ 12.7)	4,930 (▲ 0.8)	4,037 (▲ 1.3)	40 (▲ 18.7)	2,557 (▲ 3.2)	6,417 (▲ 6.0)	3,821 (▲ 4.3)	4,143 (▲ 16.7)	612 (▲ 4.0)
	2011	45,997 (▲ 1.0)	16,364 (▲ 0.6)	8,079 (▲ 8.0)	4,135 (▲ 8.1)	4,149 (▲ 7.6)	4,225 (▲ 2.5)	4,815 (▲ 0.7)	1,150 (▲ 20.2)	1,272 (▲ 40.6)	5,189 (▲ 5.2)	4,373 (▲ 8.3)	31 (▲ 22.1)	2,604 (▲ 1.8)	6,181 (▲ 3.7)	3,857 (▲ 0.9)	4,197 (▲ 1.3)	572 (▲ 6.5)
	2012	48,754 (▲ 6.0)	16,316 (▲ 0.3)	8,147 (▲ 0.8)	4,296 (▲ 3.9)	3,874 (▲ 6.6)	4,473 (▲ 5.9)	5,007 (▲ 4.0)	1,089 (▲ 5.3)	1,594 (▲ 25.3)	6,218 (▲ 19.8)	5,150 (▲ 17.8)	101 (▲ 224.3)	2,728 (▲ 4.8)	6,504 (▲ 5.2)	4,055 (▲ 5.1)	4,824 (▲ 14.9)	596 (▲ 4.2)
Half Year	'11 4-9	21,463 (▲ 4.2)	7,292 (▲ 2.5)	3,597 (▲ 11.1)	1,882 (▲ 5.2)	1,813 (▲ 10.4)	2,094 (▲ 7.7)	2,431 (▲ 7.1)	509 (▲ 17.6)	498 (▲ 22.7)	2,354 (▲ 9.0)	1,977 (▲ 5.3)	9 (▲ 75.8)	1,282 (▲ 7.8)	3,125 (▲ 4.3)	1,977 (▲ 1.1)	1,878 (▲ 4.1)	268 (▲ 1.2)
	10-3	24,423 (▲ 5.9)	8,841 (▲ 2.6)	4,330 (▲ 2.1)	2,244 (▲ 10.6)	2,267 (▲ 5.0)	2,139 (▲ 2.9)	2,333 (▲ 3.5)	645 (▲ 24.4)	778 (▲ 51.8)	2,890 (▲ 16.5)	2,490 (▲ 21.5)	22 (▲ 463.1)	1,325 (▲ 8.9)	3,058 (▲ 3.3)	1,825 (▲ 2.1)	2,413 (▲ 8.4)	311 (▲ 7.0)
	'12 4-9	23,616 (▲ 10.0)	7,742 (▲ 6.2)	3,879 (▲ 7.8)	1,932 (▲ 2.7)	1,931 (▲ 6.5)	2,229 (▲ 6.5)	2,562 (▲ 5.4)	543 (▲ 6.8)	651 (▲ 30.7)	3,030 (▲ 28.7)	2,604 (▲ 31.7)	18 (▲ 105.0)	1,375 (▲ 7.3)	3,347 (▲ 7.1)	2,065 (▲ 4.4)	2,137 (▲ 13.8)	297 (▲ 10.6)
10-3	25,284 (▲ 3.5)	8,399 (▲ 5.0)	4,228 (▲ 2.4)	2,283 (▲ 1.7)	1,889 (▲ 16.7)	2,262 (▲ 5.7)	2,570 (▲ 10.1)	553 (▲ 14.3)	840 (▲ 8.0)	3,378 (▲ 16.9)	2,750 (▲ 10.4)	38 (▲ 76.7)	1,387 (▲ 4.7)	3,121 (▲ 2.0)	1,955 (▲ 7.1)	2,775 (▲ 15.0)	345 (▲ 10.9)	
Quarter Year	'11 4-6	10,631 (▲ 3.7)	3,559 (▲ 1.3)	1,739 (▲ 7.7)	982 (▲ 6.1)	838 (▲ 5.0)	1,066 (▲ 5.7)	1,455 (▲ 1.3)	253 (▲ 30.1)	208 (▲ 10.7)	969 (▲ 22.4)	800 (▲ 20.9)	4 (▲ 7.9)	633 (▲ 10.1)	1,525 (▲ 3.7)	991 (▲ 3.3)	963 (▲ 1.2)	127 (▲ 6.6)
	7-9	10,831 (▲ 4.6)	3,733 (▲ 3.5)	1,857 (▲ 14.1)	900 (▲ 4.2)	975 (▲ 15.5)	1,028 (▲ 9.6)	976 (▲ 17.3)	255 (▲ 7.4)	289 (▲ 33.2)	1,385 (▲ 3.5)	1,177 (▲ 9.4)	5 (▲ 84.2)	649 (▲ 5.3)	1,600 (▲ 4.8)	987 (▲ 1.0)	915 (▲ 9.2)	141 (▲ 7.2)
	10-12	11,525 (▲ 6.0)	4,070 (▲ 7.4)	1,865 (▲ 5.0)	970 (▲ 6.2)	1,235 (▲ 35.5)	987 (▲ 2.5)	1,168 (▲ 4.9)	301 (▲ 45.1)	387 (▲ 33.6)	1,288 (▲ 7.4)	1,137 (▲ 19.0)	6 (▲ 363.5)	606 (▲ 0.5)	1,521 (▲ 6.2)	907 (▲ 7.4)	1,198 (▲ 15.6)	141 (▲ 12.3)
'12 4-6	1-3	12,898 (▲ 5.8)	4,771 (▲ 1.1)	2,465 (▲ 0.1)	1,274 (▲ 14.2)	1,032 (▲ 17.4)	1,152 (▲ 7.9)	1,165 (▲ 2.0)	344 (▲ 10.6)	392 (▲ 75.3)	1,602 (▲ 25.0)	1,353 (▲ 23.7)	16 (▲ 511.5)	719 (▲ 18.3)	1,538 (▲ 0.1)	918 (▲ 3.8)	1,215 (▲ 2.2)	170 (▲ 2.2)
	7-9	11,600 (▲ 9.1)	3,896 (▲ 9.5)	1,889 (▲ 8.6)	1,020 (▲ 3.9)	987 (▲ 17.8)	1,146 (▲ 7.5)	1,030 (▲ 29.2)	256 (▲ 1.0)	282 (▲ 35.1)	1,483 (▲ 53.1)	1,244 (▲ 55.4)	7 (▲ 72.5)	897 (▲ 8.6)	1,740 (▲ 14.1)	1,077 (▲ 8.7)	1,080 (▲ 12.2)	162 (▲ 27.6)
	10-12	12,016 (▲ 10.9)	3,845 (▲ 3.0)	1,990 (▲ 7.1)	912 (▲ 1.4)	944 (▲ 3.3)	1,083 (▲ 5.3)	1,533 (▲ 57.0)	288 (▲ 12.6)	369 (▲ 27.6)	1,547 (▲ 11.6)	1,360 (▲ 15.6)	12 (▲ 128.7)	888 (▲ 5.9)	1,607 (▲ 0.5)	988 (▲ 0.1)	1,057 (▲ 15.5)	134 (▲ 4.7)
1-3	13,393 (▲ 3.8)	4,665 (▲ 2.2)	2,380 (▲ 3.4)	1,313 (▲ 3.0)	972 (▲ 5.8)	1,141 (▲ 1.0)	1,318 (▲ 13.1)	292 (▲ 15.2)	405 (▲ 3.5)	1,838 (▲ 14.7)	1,425 (▲ 5.4)	5 (▲ 67.6)	713 (▲ 0.8)	1,510 (▲ 1.8)	948 (▲ 3.3)	1,511 (▲ 24.4)	193 (▲ 13.3)	
Monthly	'12 4	4,249 (▲ 0.6)	1,621 (▲ 17.2)	865 (▲ 21.2)	458 (▲ 17.7)	298 (▲ 6.1)	419 (▲ 4.7)	430 (▲ 48.4)	72 (▲ 5.2)	95 (▲ 36.1)	476 (▲ 41.4)	403 (▲ 50.9)	4 (▲ 217.6)	239 (▲ 3.3)	610 (▲ 9.8)	379 (▲ 7.9)	286 (▲ 17.3)	44 (▲ 1.5)
	5	3,362 (▲ 14.6)	1,023 (▲ 1.7)	532 (▲ 2.3)	275 (▲ 7.0)	216 (▲ 5.6)	337 (▲ 12.4)	280 (▲ 4.6)	75 (▲ 1.1)	87 (▲ 44.4)	470 (▲ 96.2)	365 (▲ 77.8)	1 (▲ 184.7)	244 (▲ 23.2)	528 (▲ 10.9)	338 (▲ 7.3)	317 (▲ 11.9)	34 (▲ 12.0)
	6	3,990 (▲ 14.9)	1,252 (▲ 7.0)	492 (▲ 2.7)	287 (▲ 14.6)	474 (▲ 44.2)	390 (▲ 6.6)	319 (▲ 2.7)	109 (▲ 0.3)	99 (▲ 27.1)	537 (▲ 36.9)	475 (▲ 45.2)	1 (▲ 40.2)	203 (▲ 0.4)	602 (▲ 22.0)	360 (▲ 11.1)	477 (▲ 43.0)	84 (▲ 93.2)
	7	3,436 (▲ 7.6)	1,040 (▲ 6.8)	557 (▲ 19.2)	264 (▲ 8.4)	219 (▲ 16.6)	358 (▲ 10.6)	335 (▲ 24.9)	86 (▲ 20.8)	115 (▲ 42.8)	493 (▲ 6.8)	444 (▲ 27.0)	1 (▲ 9.4)	211 (▲ 18.5)	508 (▲ 5.2)	333 (▲ 1.4)	291 (▲ 3.0)	44 (▲ 14.7)
	8	3,441 (▲ 6.7)	1,061 (▲ 1.4)	607 (▲ 6.7)	240 (▲ 7.1)	213 (▲ 14.1)	308 (▲ 2.0)	395 (▲ 31.9)	92 (▲ 12.3)	108 (▲ 37.3)	461 (▲ 16.0)	396 (▲ 8.6)	1 (▲ 26.7)	182 (▲ 11.2)	532 (▲ 9.8)	310 (▲ 0.2)	302 (▲ 0.8)	39 (▲ 4.5)
	9	5,140 (▲ 16.4)	1,744 (▲ 3.7)	825 (▲ 0.6)	408 (▲ 2.5)	511 (▲ 10.1)	417 (▲ 3.7)	803 (▲ 96.4)	110 (▲ 7.1)	147 (▲ 12.4)	592 (▲ 12.6)	520 (▲ 12.4)	10 (▲ 210.7)	295 (▲ 10.6)	568 (▲ 2.1)	345 (▲ 1.2)	464 (▲ 47.3)	51 (▲ 17.0)
	10	3,927 (▲ 4.4)	1,390 (▲ 2.5)	706 (▲ 1.5)	423 (▲ 7.2)	261 (▲ 1.9)	376 (▲ 10.8)	357 (▲ 15.1)	82 (▲ 1.2)	137 (▲ 21.5)	507 (▲ 25.2)	454 (▲ 25.3)	1 (▲ 66.0)	247 (▲ 17.6)	472 (▲ 0.3)	306 (▲ 9.4)	359 (▲ 1.0)	44 (▲ 6.2)
	11	3,484 (▲ 8.5)	994 (▲ 33.9)	533 (▲ 3.3)	257 (▲ 3.5)	204 (▲ 70.3)	357 (▲ 15.5)	422 (▲ 24.3)	87 (▲ 3.0)	147 (▲ 26.7)	481 (▲ 11.7)	440 (▲ 12.4)	1 (▲ 57.1)	217 (▲ 33.5)	488 (▲ 0.6)	324 (▲ 6.4)	291 (▲ 21.3)	40 (▲ 8.9)
	12	4,480 (▲ 13.2)	1,350 (▲ 11.7)	608 (▲ 1.6)	290 (▲ 6.3)	452 (▲ 60.5)	387 (▲ 14.7)	473 (▲ 15.7)	92 (▲ 28.4)	151 (▲ 4.5)	553 (▲ 22.2)	431 (▲ 12.3)	31 (▲ 7,008.9)	210 (▲ 9.9)	651 (▲ 15.1)	377 (▲ 16.8)	614 (▲ 31.9)	67 (▲ 36.8)
	'13 1	3,516 (▲ 6.3)	1,278 (▲ 0.8)	714 (▲ 3.6)	374 (▲ 2.3)	189 (▲ 10.5)	315 (▲ 4.5)	333 (▲ 14.6)	62 (▲ 8.0)	98 (▲ 9.7)	552 (▲ 57.1)	380 (▲ 29.4)	0 (▲ 0.0)	199 (▲ 10.5)	436 (▲ 7.2)	287 (▲ 10.5)	243 (▲ 5.8)	38 (▲ 27.6)
	2	3,260 (▲ 8.0)	1,053 (▲ 11.0)	600 (▲ 2.9)	258 (▲ 0.6)	194 (▲ 36.3)	333 (▲ 15.3)	300 (▲ 8.7)	70 (▲ 22.7)	105 (▲ 5.0)	464 (▲ 4.7)	408 (▲ 5.4)	2 (▲ 78.8)	180 (▲ 4.5)	400 (▲ 14.1)	258 (▲ 0.5)	357 (▲ 4.6)	82 (▲ 131.8)
	3	6,617 (▲ 9.4)	2,334 (▲ 0.6)	1,066 (▲ 7.8)	680 (▲ 4.9)	588 (▲ 14.1)	493 (▲ 7.8)	685 (▲ 25.4)	160 (▲ 14.2)	202 (▲ 17.4)	822 (▲ 1.8)	638 (▲ 5.1)	3 (▲ 13.6)	335 (▲ 8.4)	675 (▲ 11.9)	423 (▲ 16.5)	911 (▲ 41.5)	73 (▲ 12.0)
4	4,193 (▲ 1.3)	1,434 (▲ 11.5)	741 (▲ 14.4)	446 (▲ 2.6)	247 (▲ 16.9)	438 (▲ 4.6)	318 (▲ 26.0)	60 (▲ 17.0)	120 (▲ 26.2)	491 (▲ 3.2)	427 (▲ 5.9)	3 (▲ 35.0)	291 (▲ 21.5)	550 (▲ 9.7)	363 (▲ 4.3)	490 (▲ 71.0)	52 (▲ 16.1)	