

Lease Statistics (FY 2013)

◆ **Outline**

The total lease transaction volume in FY 2013 is 5,239.0 billion yen, increased by 7.5%, compared with the volume in FY 2012 <corporations researched: 223>.

Leasing percentage to total private capital investment is 7.30%, and this indicates that leasing plays a role of approximate 7% of the total private capital investment.

With respect to type of equipment, Information and Communication Equipment, Office Equipment, Industrial Equipment, Construction Equipment, Transport Equipment, Medical Equipment, and Commercial and Service Equipment have respectively showed positive growth, while Factory Equipment has showed negative growth. In regard to type of lessee's size, "Small and Medium sized Companies", and "Public Sector and Others" have continued to increase. On the other hand, "Large Companies" have turned to negative growth. In regard to type of lessee's business, "Manufacturing" and "Non-Manufacturing" have showed positive growth respectively.

◆ **Leasing Percentage**

Leasing Percentage (ratio of leasing capital investment to the total private capital investment) in FY 2013 is 7.30%, and leasing plays a role of approximate 7% of the total private capital investment.

◆ **Lease Transaction Volume by Type of Equipment**

Industrial Equipment (12.3% up), Construction Equipment (12.9% up), and Medical Equipment (10.8% up) have respectively showed a double-digit increase. Information and Communication Equipment (8.2% up) has turned to positive growth for the first time since FY2005, due to that Computer Hardware (15.5% up) and Computer software (4.6% up) showed positive growth. In addition, Office Equipment (2.1% up), Transport Equipment (6.3% up), and Commercial and Service Equipment (1.8% up) have also continued to increase respectively. On the other hand, Factory Equipment (4.3% down) has showed negative growth in a row of 2 years.

◆ **Lease Transaction Volume by Size of Lessee and Lessee's Business Type**

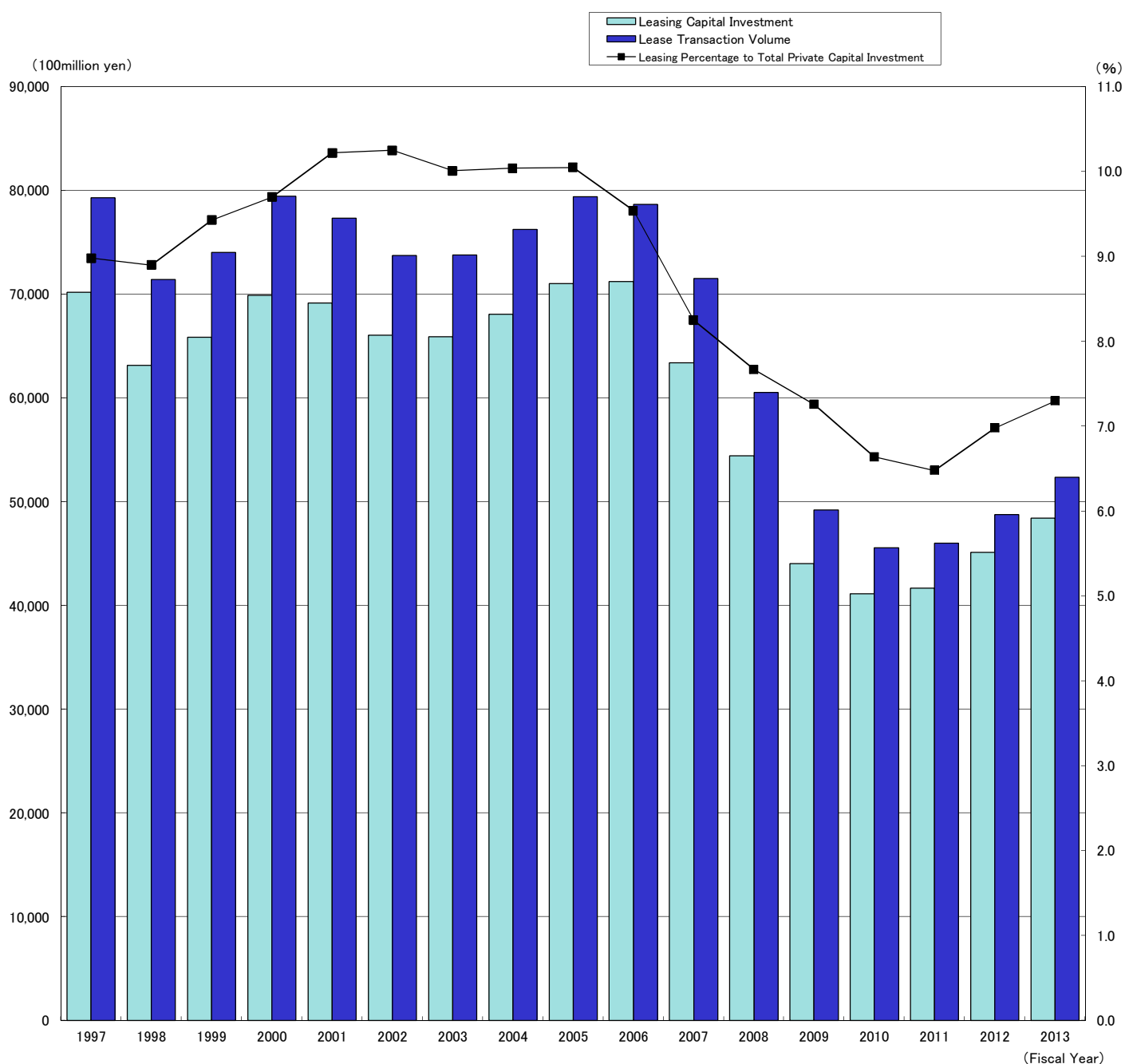
"Small and Medium Sized Companies" (companies with capital 0.1 billion yen and less or solo proprietors) has showed positive growth (15.8% up) since FY 2010. On the other hand "Large Companies" (companies with capital over 0.1 billion yen) has turned to slightly negative growth (2.5% down) for the first time for the last 2 years. The component ratio of "Small and Medium Sized Companies" is 50.5%, while that of "Large Companies" is 40.8%. The ratio of "Small and Medium Sized Companies" exceeds that of "Large Companies" in a row of 4 years.

"Non-Manufacturing" (6.9% up) has showed positive growth in a row of 3 years. Furthermore, "Manufacturing" (3.8% up) has turned to positive growth for the first time in 2 years.

Lease Statistics (April 2014)

Lease transaction volume in April 2014 is 333.6 billion yen, decreased by 20.4%. With respect to the type of equipment, Information and Communication Equipment (19.9% down), Office Equipment (27.9% down), Industrial Equipment (20.1% down), Factory Equipment (40.3% down), Construction Equipment (29.1% down), Transport Equipment (18.2% down), Medical Equipment (52.4% down), and Commercial and Service Equipment (20.9% down) have respectively showed a double-digit decrease. In addition, almost all the types of equipment showed negative growth.

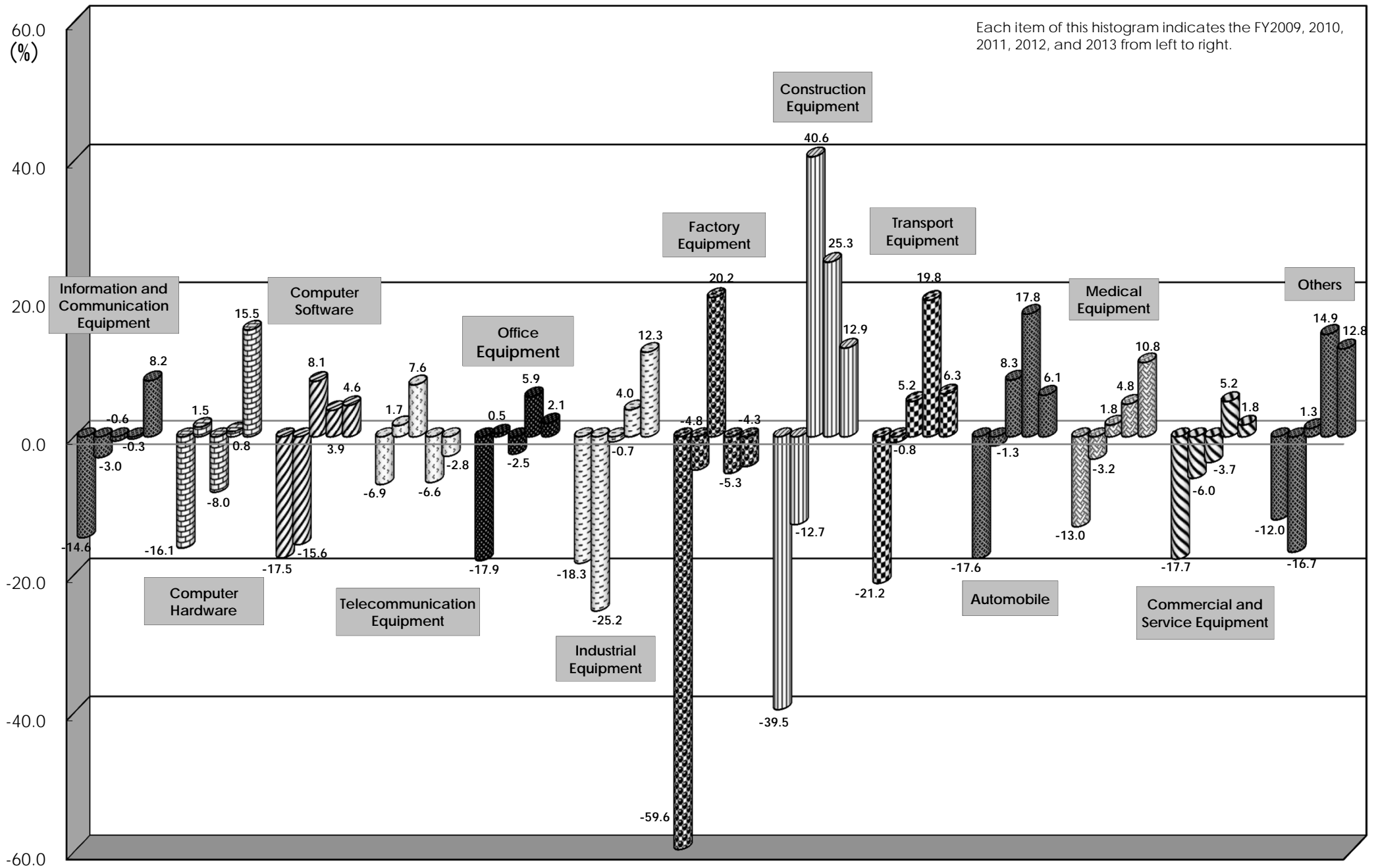
Trends in Lease Transaction Volume, Leasing Capital Investment and Leasing Percentage to Total Private Capital Investment



Fiscal Year	1997	1998	1999	2000	2001	2002	2003	2004	2005	2006	2007	2008	2009	2010	2011	2012	2013	
Lease Transaction Volume (100million yen)	79,304	71,445	74,024	79,457	77,337	73,743	73,778	76,252	79,413	78,677	71,542	60,564	49,219	45,553	45,997	48,754	52,390	
Yearly Change (%)		95.7	90.1	103.6	107.3	97.3	95.4	100	103.4	104.1	99.1	90.9	84.7	81.3	92.6	101.0	106.0	107.5
Leasing Capital investment (100 million yen)	70,180	63,150	65,862	69,922	69,148	66,052	65,917	68,086	71,017	71,213	63,420	54,444	44,058	41,161	41,682	45,106	48,411	
Yearly Change (%)		97.2	90	104.3	106.2	98.9	95.5	99.8	103.3	104.3	100.3	89.1	85.8	80.9	93.4	101.3	108.2	107.3
Leasing Percentage to Total Private Capital Investment(%)	8.98	8.90	9.43	9.70	10.22	10.25	10.01	10.04	10.05	9.54	8.25	7.67	7.26	6.64	6.48	6.98	7.30	
Corporation Reserched	344	329	314	304	283	272	262	258	259	258	248	241	233	233	230	229	223	

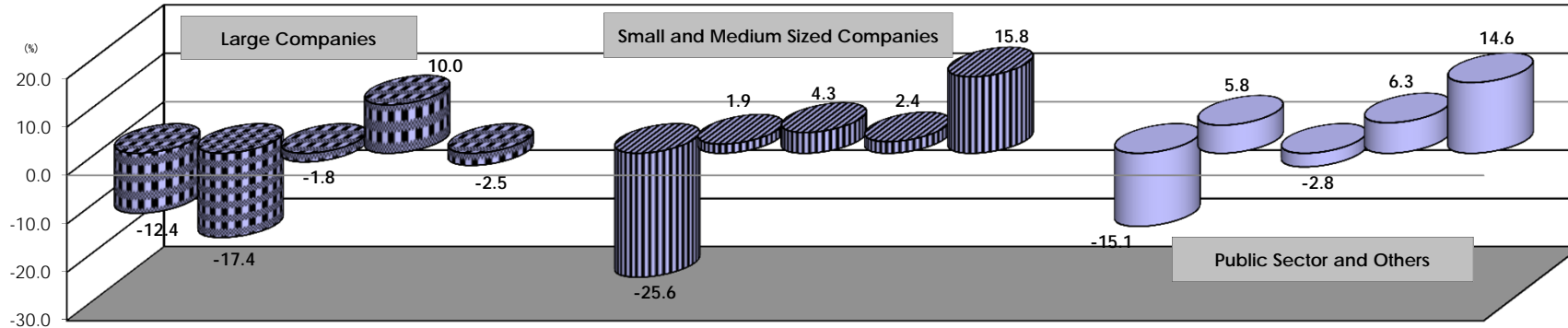
※Total Private Capital Investment, based upon nominal value, is researched by Cabinet Office. The statistic in FY 2013 is preliminary.

Lease Transaction Volume by Type of Equipment - Yearly Change (%)



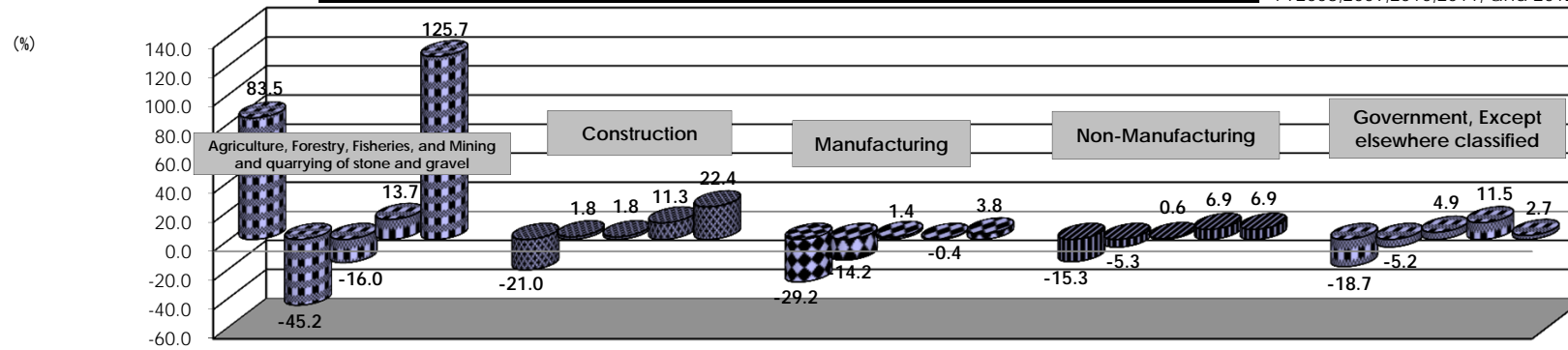
Lease Transaction Volume by Size of Lessee - Yearly Change (%)

Each item of this histogram indicates the FY 2009, 2010, 2011, 2012, and 2013 from left to right.



Lease Transaction Volume by Type of Business of Lessee - Yearly Change (%)

Each item of this histogram indicates the FY2008,2009,2010,2011, and 2012 from left to right.



Manufacturing		Yearly Change(%)
(1) Manufacture of Food		0.7
(2) Textile mill, Lumber and wood, and Pulp Products		5.5
(3) Chemical and allied, Petroleum and coal, Plastic Products		-6.7
(4) Iron and Steel, Non-ferrous Metal, and Fabricated Metal Products		4.8
(5) Production, Electrical, Information and Communication, Transportation Machinery		3.2
(6) Others		14.6

Non-Manufacturing		Yearly Change(%)
(1) Electricity, Gas, Heat supply and Water		30.7
(2) Information and Communications		-11.6
(3) Transport and Postal activities		3.9
(4) Wholesale and Retail trade		14.9
(5) Finance and Insurance		1.5
(6) Real estate, Goods rental, and Leasing		-6.3
(7) Accommodations, Eating and drinking services		4.1
(8) Medical, Health care and Welfare		15.1
(9) Services, N.E.C.		7.0

Trends in Lease Transaction Volume, Leasing Capital Investment and Leasing Percentage to Total Private Capital Investment

(Unit: 100 million yen, %)

Fiscal Year	Lease Transaction Volume		Leasing Capital Investment		Total Private Capital Investment		Leasing Percentage (B)/(C)
	(A)	Yearly Change	(B)	Yearly Change	(C)	Yearly Change	
1963	7	—	—	—	46,702	—	—
1964	40	571.4	—	—	54,670	117.1	—
1965	67	167.5	—	—	50,883	93.1	—
1966	109	162.7	—	—	65,160	128.1	—
1967	290	266.1	—	—	84,691	130.0	—
1968	450	155.2	—	—	103,499	122.2	—
1969	1,200	266.7	—	—	135,607	131.0	—
1970	2,106	175.5	—	—	156,685	115.5	—
1971	2,793	132.6	—	—	152,967	97.6	—
1972	3,721	133.2	—	—	168,937	110.4	—
1973	5,279	141.9	—	—	224,299	132.8	—
1974	5,290	100.2	—	—	245,518	109.5	—
1975	5,621	106.3	—	—	243,739	99.3	—
1976	8,127	144.6	—	—	256,077	105.1	—
1977	8,604	105.9	—	—	264,534	103.3	—
1978	10,566	122.8	7,820	—	293,354	110.9	2.67
1979	14,611	138.3	10,330	132.2	340,188	116.0	3.04
1980	15,744	107.8	11,550	111.8	396,807	—	2.91
1981	19,327	122.8	14,342	124.2	413,464	104.2	3.47
1982	23,966	124.0	18,872	131.6	420,013	101.6	4.49
1983	29,927	124.9	23,262	123.3	423,263	100.8	5.50
1984	36,758	122.8	28,843	124.0	477,141	112.7	6.04
1985	43,225	117.6	33,520	116.2	545,560	114.3	6.14
1986	47,575	110.1	37,636	112.3	563,462	103.3	6.68
1987	52,967	111.3	42,089	111.8	600,936	106.7	7.00
1988	67,170	126.8	52,226	124.1	718,103	119.5	7.27
1989	70,649	105.2	57,540	110.2	807,038	112.4	7.13
1990	84,152	119.1	65,420	113.7	920,967	114.1	7.10
1991	88,016	104.6	68,843	105.2	929,323	100.9	7.41
1992	77,742	88.3	62,813	91.2	873,450	94.0	7.19
1993	71,825	92.4	59,780	95.2	751,634	86.1	7.95
1994	73,497	102.3	61,631	103.1	713,874	—	8.63
1995	76,214	103.7	65,804	106.8	722,218	101.2	9.11
1996	82,867	108.7	72,238	109.8	745,079	103.2	9.70
1997	79,304	95.7	70,180	97.2	781,900	104.9	8.98
1998	71,445	90.1	63,150	90.0	709,486	90.7	8.90
1999	74,024	103.6	65,862	104.3	698,279	98.4	9.43
2000	79,457	107.3	69,922	106.2	720,764	103.2	9.70
2001	77,337	97.3	69,148	98.9	676,867	93.9	10.22
2002	73,743	95.4	66,052	95.5	644,187	95.2	10.25
2003	73,778	100.0	65,917	99.8	658,481	102.2	10.01
2004	76,252	103.4	68,086	103.3	678,469	103.0	10.04
2005	79,413	104.1	71,017	104.3	706,357	104.1	10.05
2006	78,677	99.1	71,213	100.3	746,507	105.7	9.54
2007	71,542	90.9	63,420	89.1	768,317	102.9	8.25
2008	60,564	84.7	54,444	85.8	710,147	92.4	7.67
2009	49,219	81.3	44,058	80.9	607,180	85.5	7.26
2010	45,553	92.6	41,161	93.4	619,451	102.0	6.64
2011	45,997	101.0	41,682	101.3	643,204	103.8	6.48
2012	48,754	106.0	45,106	108.2	646,604	100.5	6.98
2013	52,390	107.5	48,411	107.3	663,096	102.6	7.30

The statistic in FY 2013 is preliminary (released on May 15).

Trends in Lease Transaction Volume by Type of Equipment

(Unit: in 100 million yen)

	FY 2010		FY 2011		FY 2012		FY 2013		Yearly Change				
	Leasing Volume	Component Ratio(%)	Leasing Volume	Component Ratio (%)	Leasing Volume	Component Ratio (%)	Leasing Volume	Component Ratio (%)	10/09	11/10	12/11	13/12	
1	Information and Communication Equipment	16,460	36.1	16,364	35.6	16,316	33.5	17,662	33.7	97.0	99.4	99.7	108.2
	Computer Hardware	8,778	19.3	8,079	17.6	8,147	16.7	9,407	18.0	101.5	92.0	100.8	115.5
	Computer Software	3,827	8.4	4,135	9.0	4,296	8.8	4,492	8.6	84.4	108.1	103.9	104.6
	Telecommunication Equipment	3,855	8.5	4,149	9.0	3,874	7.9	3,764	7.2	101.7	107.6	93.4	97.2
2	Office Equipment	4,335	9.5	4,225	9.2	4,473	9.2	4,568	8.7	100.5	97.5	105.9	102.1
3	Industrial Equipment	4,849	10.6	4,815	10.5	5,007	10.3	5,623	10.7	74.8	99.3	104.0	112.3
4	Factory Equipment	957	2.1	1,150	2.5	1,089	2.2	1,042	2.0	95.2	120.2	94.7	95.7
5	Construction Equipment	905	2.0	1,272	2.8	1,594	3.3	1,800	3.4	87.3	140.6	125.3	112.9
6	Transport Equipment	4,930	10.8	5,189	11.3	6,218	12.8	6,610	12.6	99.2	105.2	119.8	106.3
	Automobile	4,037	8.9	4,373	9.5	5,150	10.6	5,466	10.4	98.7	108.3	117.8	106.1
	Vessel	40	0.1	31	0.1	101	0.2	35	0.1	81.3	77.9	324.3	34.4
7	Medical Equipment	2,557	5.6	2,604	5.7	2,728	5.6	3,022	5.8	96.8	101.8	104.8	110.8
8	Commercial and Service Equipment	6,417	14.1	6,181	13.4	6,504	13.3	6,624	12.6	94.0	96.3	105.2	101.8
	Commercial Equipment	3,821	8.4	3,857	8.4	4,055	8.3	4,293	8.2	95.7	100.9	105.1	105.9
9	Others	4,143	9.1	4,197	9.1	4,824	9.9	5,439	10.4	83.3	101.3	114.9	112.8
	Physical and Chemical Equipment	612	1.3	572	1.2	596	1.2	575	1.1	104.0	93.5	104.2	96.4
Total		45,553	100.0	45,997	100.0	48,754	100.0	52,390	100.0	92.6	101.0	106.0	107.5
Corporations researched		233		230		229		223					

Trends in Lease Transaction Volume by Size of Lessee

(Unit: in 100 million yen)

		FY 2010		FY 2011		FY 2012		FY 2013		Yearly Change			
		Leasing Volume	Component Ratio(%)	Leasing Volume	Component Ratio (%)	Leasing Volume	Component Ratio (%)	Leasing Volume	Component Ratio (%)	10/09	11/10	12/11	13/12
1	Large Companies	20,301	44.6	19,935	43.3	21,921	45.0	21,366	40.8	82.6	98.2	110.0	97.5
	Listed companies	9,870	21.7	10,269	22.3	10,852	22.3	9,545	18.2	79.4	104.0	105.7	88.0
2	Small and Medium Sized Companies	21,388	47.0	22,307	48.5	22,841	46.8	26,448	50.5	101.9	104.3	102.4	115.8
3	Public Sector and Others	3,864	8.5	3,756	8.2	3,993	8.2	4,575	8.7	105.8	97.2	106.3	114.6
Total		45,553	100.0	45,997	100.0	48,754	100.0	52,390	100.0	92.6	101.0	106.0	107.5

Trends in Lease Transaction Volume by Lessee's Business Type

(Unit: in 100 million yen)

		FY 2010		FY 2011		FY 2012		FY 2013		Yearly Change			
		Leasing Volume	Component Ratio(%)	Leasing Volume	Component Ratio (%)	Leasing Volume	Component Ratio (%)	Leasing Volume	Component Ratio (%)	10/09	11/10	12/11	13/12
1	Agriculture, Forestry, Fisheries, and Mining and quarrying of stone and gravel	328	0.7	276	0.6	313	0.6	707	1.3	54.8	84.0	113.7	225.7
2	Construction	1,968	4.3	2,003	4.4	2,229	4.6	2,728	5.2	101.8	101.8	111.3	122.4
3	Manufacturing	9,218	20.2	9,345	20.3	9,311	19.1	9,664	18.4	85.8	101.4	99.6	103.8
	Manufacture of Food	1,413	3.1	1,425	3.1	1,668	3.4	1,679	3.2	97.1	100.8	117.1	100.7
	Textile mill, Lumber and wood, and Pulp Products	927	2.0	810	1.8	801	1.6	845	1.6	60.7	87.4	99.0	105.5
	Chemical and allied, Petroleum and coal, Plastic Products	1,008	2.2	940	2.0	980	2.0	914	1.7	93.3	93.2	104.3	93.3
	Iron and Steel, Non-ferrous Metal, and Fabricated Metal Products	1,134	2.5	1,122	2.4	1,056	2.2	1,106	2.1	90.1	98.9	94.2	104.8
	Production, Electrical, Information and Communication, Transportation Machinery	3,396	7.5	3,771	8.2	3,424	7.0	3,534	6.7	83.9	111.0	90.8	103.2
	Others	1,340	2.9	1,279	2.8	1,382	2.8	1,585	3.0	97.2	95.4	108.1	114.6
4	Non-manufacturing	30,692	67.4	30,864	67.1	32,987	67.7	35,272	67.3	94.7	100.6	106.9	106.9
	Electricity, Gas, Heat supply and Water	447	1.0	310	0.7	589	1.2	770	1.5	89.8	69.5	189.9	130.7
	Information and Communications	2,361	5.2	2,823	6.1	2,578	5.3	2,279	4.4	105.9	119.6	91.3	88.4
	Transport and Postal activities	2,789	6.1	2,743	6.0	3,032	6.2	3,152	6.0	86.0	98.4	110.5	103.9
	Wholesale and Retail trade	7,906	17.4	8,420	18.3	8,877	18.2	10,199	19.5	94.4	106.5	105.4	114.9
	Finance and Insurance	1,519	3.3	1,118	2.4	1,341	2.7	1,361	2.6	86.7	73.6	119.9	101.5
	Real estate, Goods rental, and Leasing	2,811	6.2	2,554	5.6	3,532	7.2	3,308	6.3	82.3	90.9	138.3	93.7
	Accommodations, Eating and drinking services	985	2.2	1,031	2.2	1,079	2.2	1,123	2.1	106.8	104.7	104.7	104.1
	Medical, Health care and Welfare	3,142	6.9	3,389	7.4	3,477	7.1	4,001	7.6	113.4	107.9	102.6	115.1
	Services, N.E.C.	8,732	19.2	8,476	18.4	8,483	17.4	9,078	17.3	94.9	97.1	100.1	107.0
5	Government, Except elsewhere classified	3,347	7.3	3,509	7.6	3,914	8.0	4,019	7.7	94.8	104.9	111.5	102.7
Total		45,553	100.0	45,997	100.0	48,754	100.0	52,390	100.0	92.6	101.0	106.0	107.5

Leasing Volume by Type of Equipment (Apr. 2014)

		Leasing cases	Component Ratio (%)	Year-on-year Change (%)	Leasing Volume (in million yen)	Component Ratio (%)	Year-on-year Change (%)
1	Information and Communication Equipment	73,198	38.2	89.4	114,961.9	34.5	80.1
	Computer Hardware	(55,234)	(28.9)	(117.7)	(64,074.2)	(19.2)	(86.5)
	Computer Software	(5,606)	(2.9)	(49.3)	(29,573.3)	(8.9)	(66.3)
	Telecommunication Equipment	(12,358)	(6.5)	(52.3)	(21,314.4)	(6.4)	(86.2)
2	Office Equipment	23,654	12.4	67.4	31,599.2	9.5	72.1
3	Industrial Equipment	37,880	19.8	1,246.5	25,431.9	7.6	79.9
4	Factory Equipment	229	0.1	51.0	3,569.3	1.1	59.7
5	Construction Equipment	1,125	0.6	101.5	8,503.8	2.5	70.9
6	Transport Equipment	14,929	7.8	89.4	40,183.1	12.0	81.8
	Automobile	(13,790)	(7.2)	(91.8)	(34,700.2)	(10.4)	(81.3)
	Vessel	(6)	(0.0)	(50.0)	(220.0)	(0.1)	(87.8)
7	Medical Equipment	3,095	1.6	49.0	13,842.8	4.1	47.6
8	Commercial and Service Equipment	20,416	10.7	98.9	43,543.5	13.1	79.1
	Commercial Equipment	(16,598)	(8.7)	(101.8)	(29,393.8)	(8.8)	(81.1)
9	Others	16,914	8.8	173.1	51,957.1	15.6	106.1
	Physical and Chemical Equipment	(814)	(0.4)	(63.5)	(3,351.5)	(1.0)	(64.9)
Total		191,440	100.0	109.4	333,592.6	100.0	79.6

【Corporations researched: 219】

Changes in Lease Transaction Volume

Unit: in 100 Million Yen, Yearly Changes: Parenthesized

	Total	Information and Communication Equipment			Office Equipment	Industry Equipment	Factory Equipment	Construction Equipment	Transport Equipment		Medical Equipment	Commercial and Service Equipment		Others				
		Computer Hardware	Computer Software	Telecommunication Equipment					Automobile	Vessel		Commercial Equipment	Physical and Chemical Equipment					
Calendar Year	2011	45,177 (▲ 2.5)	16,188 (▲ 0.6)	7,923 (▲ 7.3)	3,968 (▲ 0.4)	4,297 (▲ 14.8)	4,148 (▲ 4.3)	4,742 (▲ 9.1)	1,121 (▲ 28.3)	1,108 (▲ 18.8)	4,924 (▲ 4.4)	4,208 (▲ 2.5)	17 (▲ 73.6)	2,495 (▲ 4.5)	6,186 (▲ 4.6)	3,770 (▲ 2.3)	4,265 (▲ 4.7)	583 (▲ 0.4)
	2012	48,405 (▲ 7.1)	16,247 (▲ 0.4)	8,191 (▲ 3.4)	4,176 (▲ 5.2)	3,880 (▲ 9.7)	4,501 (▲ 8.5)	4,979 (▲ 5.0)	1,149 (▲ 2.4)	1,477 (▲ 33.3)	6,172 (▲ 25.4)	5,282 (▲ 25.5)	67 (▲ 287.2)	2,768 (▲ 10.9)	6,495 (▲ 5.0)	3,991 (▲ 5.9)	4,616 (▲ 8.2)	619 (▲ 6.2)
	2013	49,657 (▲ 2.6)	15,923 (▲ 2.0)	8,287 (▲ 1.2)	4,102 (▲ 1.8)	3,533 (▲ 8.9)	4,447 (▲ 1.2)	5,620 (▲ 12.9)	948 (▲ 17.4)	1,710 (▲ 15.8)	6,562 (▲ 6.3)	5,359 (▲ 1.5)	28 (▲ 58.2)	2,726 (▲ 1.5)	6,348 (▲ 2.3)	4,054 (▲ 1.6)	5,373 (▲ 16.4)	583 (▲ 5.8)
Fiscal Year (Final Figures)	2011	45,997 (▲ 1.0)	16,364 (▲ 0.6)	8,079 (▲ 8.0)	4,135 (▲ 8.1)	4,149 (▲ 7.6)	4,225 (▲ 2.5)	4,815 (▲ 0.7)	1,150 (▲ 20.2)	1,272 (▲ 40.6)	5,189 (▲ 5.2)	4,373 (▲ 8.3)	31 (▲ 22.1)	2,604 (▲ 1.8)	6,181 (▲ 3.7)	3,857 (▲ 0.9)	4,197 (▲ 1.3)	572 (▲ 6.5)
	2012	48,754 (▲ 6.0)	16,316 (▲ 0.3)	8,147 (▲ 0.8)	4,296 (▲ 3.9)	3,874 (▲ 6.6)	4,473 (▲ 5.9)	5,007 (▲ 4.0)	1,089 (▲ 5.3)	1,594 (▲ 25.3)	6,218 (▲ 19.8)	5,150 (▲ 17.8)	101 (▲ 224.3)	2,728 (▲ 4.8)	6,504 (▲ 5.2)	4,055 (▲ 5.1)	4,824 (▲ 14.9)	596 (▲ 4.2)
	2013	52,390 (▲ 7.5)	17,662 (▲ 8.2)	9,407 (▲ 15.5)	4,492 (▲ 4.6)	3,764 (▲ 2.8)	4,568 (▲ 2.1)	5,623 (▲ 12.3)	1,042 (▲ 4.3)	1,800 (▲ 12.9)	6,610 (▲ 6.3)	5,466 (▲ 6.1)	35 (▲ 65.6)	3,022 (▲ 10.8)	6,624 (▲ 1.8)	4,293 (▲ 5.9)	5,439 (▲ 12.8)	575 (▲ 3.6)
Half Year	'12 4-9	23,616 (▲ 10.0)	7,742 (▲ 6.2)	3,879 (▲ 7.8)	1,932 (▲ 2.7)	1,931 (▲ 6.5)	2,229 (▲ 6.5)	2,562 (▲ 5.4)	543 (▲ 6.8)	651 (▲ 30.7)	3,030 (▲ 28.7)	2,604 (▲ 31.7)	18 (▲ 105.0)	1,375 (▲ 7.3)	3,347 (▲ 7.1)	2,065 (▲ 4.4)	2,137 (▲ 13.8)	297 (▲ 10.6)
	10-3	25,284 (▲ 3.5)	8,399 (▲ 5.0)	4,228 (▲ 2.4)	2,283 (▲ 1.7)	1,889 (▲ 16.7)	2,262 (▲ 5.7)	2,570 (▲ 10.1)	553 (▲ 14.3)	840 (▲ 8.0)	3,378 (▲ 16.9)	2,750 (▲ 10.4)	38 (▲ 76.7)	1,387 (▲ 4.7)	3,121 (▲ 2.0)	1,955 (▲ 7.1)	2,775 (▲ 15.0)	345 (▲ 10.9)
	'13 4-9	24,310 (▲ 2.9)	7,530 (▲ 2.7)	3,778 (▲ 2.6)	1,952 (▲ 1.0)	1,800 (▲ 6.8)	2,264 (▲ 1.6)	3,149 (▲ 22.9)	431 (▲ 20.7)	749 (▲ 15.1)	3,057 (▲ 0.9)	2,602 (▲ 0.1)	16 (▲ 11.1)	1,363 (▲ 0.8)	3,196 (▲ 4.5)	2,079 (▲ 0.7)	2,569 (▲ 20.2)	249 (▲ 16.2)
10-3	28,661 (▲ 13.4)	9,911 (▲ 18.0)	5,544 (▲ 31.1)	2,589 (▲ 13.4)	1,778 (▲ 5.9)	2,351 (▲ 4.0)	2,744 (▲ 6.8)	603 (▲ 9.1)	1,080 (▲ 28.5)	3,599 (▲ 6.5)	2,878 (▲ 4.7)	17 (▲ 56.4)	1,821 (▲ 31.3)	3,395 (▲ 8.8)	2,123 (▲ 8.6)	3,157 (▲ 13.8)	327 (▲ 5.1)	
Quarter Year	'12 4-6	11,800 (▲ 9.1)	3,896 (▲ 9.5)	1,889 (▲ 8.6)	1,020 (▲ 3.9)	987 (▲ 17.8)	1,146 (▲ 7.5)	1,030 (▲ 29.2)	256 (▲ 1.0)	282 (▲ 35.1)	1,483 (▲ 53.1)	1,244 (▲ 55.4)	7 (▲ 72.5)	687 (▲ 8.6)	1,740 (▲ 14.1)	1,077 (▲ 8.7)	1,080 (▲ 12.2)	162 (▲ 27.6)
	7-9	12,016 (▲ 10.9)	3,845 (▲ 3.0)	1,990 (▲ 7.1)	912 (▲ 1.4)	944 (▲ 3.3)	1,083 (▲ 5.3)	1,533 (▲ 57.0)	288 (▲ 12.6)	369 (▲ 27.6)	1,547 (▲ 11.6)	1,360 (▲ 15.6)	12 (▲ 128.7)	688 (▲ 5.9)	1,607 (▲ 0.5)	988 (▲ 0.1)	1,057 (▲ 15.5)	134 (▲ 4.7)
	10-12	11,891 (▲ 3.2)	3,735 (▲ 8.2)	1,847 (▲ 1.0)	970 (▲ 0.0)	917 (▲ 25.7)	1,120 (▲ 13.6)	1,251 (▲ 7.1)	261 (▲ 13.4)	435 (▲ 12.4)	1,540 (▲ 19.6)	1,325 (▲ 16.5)	33 (▲ 469.0)	674 (▲ 11.3)	1,610 (▲ 5.9)	1,008 (▲ 11.0)	1,264 (▲ 5.5)	152 (▲ 8.1)
1-3	13,393 (▲ 3.8)	4,665 (▲ 2.2)	2,380 (▲ 3.4)	1,313 (▲ 3.0)	972 (▲ 5.8)	1,141 (▲ 1.0)	1,318 (▲ 13.1)	292 (▲ 15.2)	405 (▲ 3.5)	1,838 (▲ 14.7)	1,425 (▲ 5.4)	5 (▲ 67.6)	713 (▲ 0.8)	1,510 (▲ 1.8)	948 (▲ 3.3)	1,511 (▲ 24.4)	193 (▲ 13.3)	
'13 4-6	12,223 (▲ 5.4)	3,761 (▲ 3.5)	1,793 (▲ 5.1)	954 (▲ 6.5)	1,014 (▲ 2.7)	1,170 (▲ 2.1)	1,746 (▲ 69.6)	180 (▲ 29.7)	343 (▲ 21.7)	1,461 (▲ 1.5)	1,260 (▲ 1.3)	7 (▲ 8.2)	722 (▲ 5.0)	1,524 (▲ 12.4)	1,003 (▲ 6.9)	1,318 (▲ 22.0)	123 (▲ 24.3)	
7-9	12,087 (▲ 0.6)	3,769 (▲ 2.0)	1,985 (▲ 0.2)	998 (▲ 9.4)	786 (▲ 16.7)	1,094 (▲ 1.0)	1,403 (▲ 8.4)	251 (▲ 12.7)	406 (▲ 10.0)	1,597 (▲ 3.2)	1,342 (▲ 1.4)	9 (▲ 21.7)	642 (▲ 6.7)	1,673 (▲ 4.1)	1,076 (▲ 9.0)	1,252 (▲ 18.4)	126 (▲ 8.3)	
10-12	11,954 (▲ 0.5)	3,728 (▲ 0.2)	2,129 (▲ 15.2)	838 (▲ 13.6)	762 (▲ 17.0)	1,042 (▲ 7.0)	1,152 (▲ 7.9)	226 (▲ 13.6)	556 (▲ 27.8)	1,667 (▲ 8.2)	1,331 (▲ 0.5)	7 (▲ 80.0)	650 (▲ 3.7)	1,641 (▲ 1.9)	1,027 (▲ 1.9)	1,293 (▲ 2.3)	142 (▲ 6.7)	
1-3	16,707 (▲ 24.7)	6,183 (▲ 32.5)	3,415 (▲ 43.5)	1,751 (▲ 33.4)	1,016 (▲ 4.6)	1,309 (▲ 14.7)	1,592 (▲ 20.8)	378 (▲ 29.5)	524 (▲ 29.2)	1,932 (▲ 5.1)	1,547 (▲ 8.5)	10 (▲ 95.4)	1,172 (▲ 64.3)	1,754 (▲ 16.1)	1,097 (▲ 15.7)	1,864 (▲ 23.4)	185 (▲ 3.8)	
Monthly	'13 4	4,193 (▲ 1.3)	1,434 (▲ 11.5)	741 (▲ 14.4)	446 (▲ 2.6)	247 (▲ 16.9)	438 (▲ 4.6)	318 (▲ 26.0)	60 (▲ 17.0)	120 (▲ 26.2)	491 (▲ 3.2)	427 (▲ 5.9)	3 (▲ 35.0)	291 (▲ 21.5)	550 (▲ 9.7)	363 (▲ 4.3)	490 (▲ 71.0)	52 (▲ 16.1)
	5	4,053 (▲ 20.6)	957 (▲ 6.5)	507 (▲ 4.7)	226 (▲ 17.7)	223 (▲ 3.3)	340 (▲ 1.1)	1,100 (▲ 292.1)	59 (▲ 21.7)	108 (▲ 23.7)	437 (▲ 7.1)	394 (▲ 7.7)	1 (▲ 31.4)	233 (▲ 4.5)	496 (▲ 6.2)	325 (▲ 3.9)	324 (▲ 2.5)	33 (▲ 3.4)
	6	3,977 (▲ 0.3)	1,370 (▲ 9.4)	545 (▲ 10.8)	281 (▲ 1.9)	543 (▲ 14.7)	392 (▲ 0.4)	328 (▲ 2.8)	61 (▲ 43.6)	115 (▲ 15.8)	533 (▲ 0.8)	440 (▲ 7.4)	4 (▲ 189.0)	198 (▲ 2.8)	478 (▲ 20.7)	315 (▲ 12.4)	503 (▲ 5.5)	38 (▲ 54.2)
	7	3,596 (▲ 4.7)	1,063 (▲ 2.2)	540 (▲ 3.1)	293 (▲ 11.0)	230 (▲ 5.1)	363 (▲ 1.2)	426 (▲ 27.1)	82 (▲ 4.4)	121 (▲ 5.6)	506 (▲ 2.6)	463 (▲ 4.1)	4 (▲ 202.4)	184 (▲ 12.6)	559 (▲ 10.1)	358 (▲ 7.5)	293 (▲ 0.6)	38 (▲ 13.0)
	8	3,511 (▲ 2.0)	1,066 (▲ 0.5)	546 (▲ 10.0)	316 (▲ 31.7)	203 (▲ 4.9)	316 (▲ 2.8)	435 (▲ 10.3)	57 (▲ 37.9)	117 (▲ 8.7)	413 (▲ 10.4)	371 (▲ 6.2)	1 (▲ 39.9)	202 (▲ 11.2)	543 (▲ 2.2)	349 (▲ 12.5)	360 (▲ 19.1)	34 (▲ 12.8)
	9	4,979 (▲ 3.1)	1,641 (▲ 5.9)	899 (▲ 8.9)	389 (▲ 4.7)	353 (▲ 30.9)	415 (▲ 0.5)	542 (▲ 32.5)	112 (▲ 2.2)	168 (▲ 14.4)	677 (▲ 14.4)	508 (▲ 2.3)	4 (▲ 56.7)	255 (▲ 13.6)	570 (▲ 0.4)	370 (▲ 7.3)	599 (▲ 29.2)	53 (▲ 4.4)
	10	4,081 (▲ 3.9)	1,330 (▲ 4.3)	779 (▲ 10.3)	330 (▲ 22.0)	221 (▲ 15.2)	365 (▲ 3.1)	437 (▲ 22.6)	61 (▲ 25.2)	189 (▲ 38.5)	493 (▲ 2.8)	446 (▲ 1.8)	1 (▲ 25.4)	228 (▲ 7.8)	489 (▲ 3.7)	328 (▲ 7.1)	488 (▲ 36.0)	50 (▲ 13.0)
	11	3,630 (▲ 4.2)	1,116 (▲ 12.3)	667 (▲ 25.3)	237 (▲ 7.8)	212 (▲ 3.6)	325 (▲ 9.2)	317 (▲ 24.9)	73 (▲ 16.1)	180 (▲ 22.0)	526 (▲ 9.5)	448 (▲ 1.9)	2 (▲ 165.7)	197 (▲ 9.5)	518 (▲ 6.1)	307 (▲ 5.5)	378 (▲ 30.1)	37 (▲ 7.8)
	12	4,244 (▲ 5.3)	1,282 (▲ 5.1)	683 (▲ 12.2)	270 (▲ 6.6)	329 (▲ 27.3)	353 (▲ 8.8)	398 (▲ 15.7)	91 (▲ 0.9)	187 (▲ 23.9)	648 (▲ 17.2)	438 (▲ 1.6)	3 (▲ 88.9)	225 (▲ 7.1)	634 (▲ 2.5)	392 (▲ 4.0)	426 (▲ 30.6)	55 (▲ 19.1)
	'14 1	3,794 (▲ 7.9)	1,423 (▲ 11.3)	781 (▲ 9.4)	409 (▲ 9.2)	232 (▲ 22.8)	307 (▲ 2.6)	299 (▲ 10.1)	59 (▲ 5.0)	137 (▲ 39.4)	419 (▲ 24.1)	348 (▲ 8.3)	0 (▲ 0.0)	243 (▲ 22.2)	456 (▲ 4.7)	300 (▲ 12.4)	451 (▲ 85.7)	50 (▲ 33.9)
	2	3,808 (▲ 16.8)	1,322 (▲ 25.5)	737 (▲ 22.7)	371 (▲ 43.9)	214 (▲ 9.9)	320 (▲ 4.0)	426 (▲ 42.1)	83 (▲ 18.8)	130 (▲ 23.8)	631 (▲ 36.2)	413 (▲ 1.3)	2 (▲ 5.8)	192 (▲ 7.0)	379 (▲ 5.2)	250 (▲ 2.9)	325 (▲ 8.9)	38 (▲ 53.8)
	3	9,105 (▲ 37.6)	3,438 (▲ 47.3)	1,897 (▲ 78.0)	971 (▲ 42.8)	570 (▲ 3.0)	682 (▲ 38.5)	867 (▲ 26.4)	236 (▲ 47.6)	257 (▲ 27.1)	882 (▲ 7.3)	785 (▲ 23.1)	8 (▲ 144.2)	736 (▲ 120.0)	918 (▲ 36.1)	546 (▲ 29.1)	1,088 (▲ 19.4)	97 (▲ 33.4)
4	3,336 (▲ 20.4)	1,150 (▲ 19.9)	641 (▲ 13.5)	296 (▲ 33.7)	213 (▲ 13.8)	316 (▲ 27.9)	254 (▲ 20.1)	36 (▲ 40.3)	85 (▲ 29.1)	402 (▲ 18.2)	347 (▲ 18.7)	2 (▲ 12.2)	138 (▲ 52.4)	435 (▲ 20.9)	294 (▲ 18.9)	520 (▲ 6.1)	34 (▲ 35.1)	