

Lease Statistics (FY2014)

[Key Points]

- Total lease transaction volume: 4,825.2 billion yen, decreased by 7.9% compared with the volume in FY2013.
- Leasing capital investment: 4,413.2 billion yen, decreased by 8.8% compared with FY2013.
- Leasing percentage: 6.43%
- Leasing capital investment (Consolidated basis): 6,160.7 billion yen, decreased by 3.8% compared with FY2013 (Increased by 43.3% for overseas).
- Components of total lease transaction volume: Decrease in all types of equipment excluding “Others;” decrease in “Small and Medium Sized Companies” for the first time in 5 years; and decrease in “Non-Manufacturing” for the first time in 4 years.

◆ Total Lease Transaction Volume and Leasing Capital Investment

Total lease transaction volume for FY2014 was 4,825.2 billion yen, a decrease of 7.9% compared with FY2013; and leasing capital investment was 4,413.2 billion yen, a decrease of 8.8% compared with FY2013, representing declines for the first time in 4 years since FY2010.

◆ Leasing percentage

Leasing percentage (ratio of leasing capital investment to the total private capital investment) in FY2014 was 6.43%; i.e. approximately 6% of private capital investments were made through leasing.

◆ (Reference) Consolidated Lease Statistics (FY2014)

Leasing capital investment for FY2014 on a consolidated basis was 6,160.7 billion yen, a decrease of 3.8% compared with FY2013. Components were 5,073.6 billion yen for domestic leasing (10.1% down) and 1,087.1 billion yen for overseas leasing (43.3% up).

◆ Lease Transaction Volume by Type of Equipment

Decreases were reported in all types of equipment with the exception of “Others” (1.7% up). Information and Communication Equipment (11.9% down), which accounted for more than 30% of the market, and Medical Equipment (24.6% down), in particular, showed substantial declines. Decreases in Industrial Equipment (2.5% down), Transport Equipment (4.5% down) and Commercial and Service Equipment (5.0% down) were relatively small.

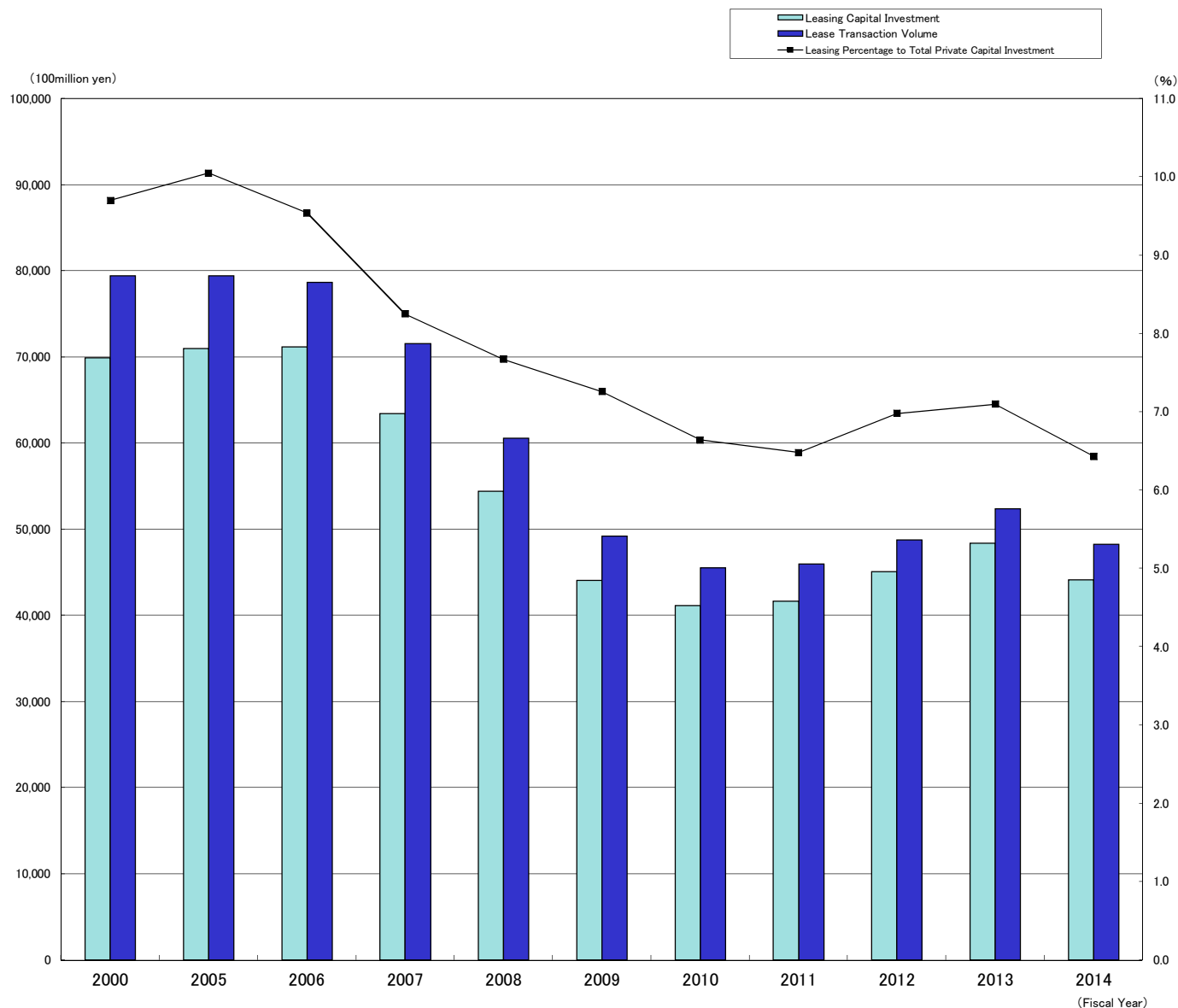
◆ Lease Transaction Volume by Size of Lessee and Lessee’s Business Type

“Small and Medium Sized Companies” (companies with capital of 0.1 billion yen and less or solo proprietors), which accounted for approximately 50% of total lessees showed a decline (10.7% down) for the first time in 5 years and “Large Companies” (companies with capital of over 0.1 billion yen) declined (7.4% down) for the second year in a row. “Manufacturing” (8.8% down) declined for the first time in 2 years and “Non-Manufacturing” (10.0% down) declined for the first time in 4 years.

Lease Statistics (April 2015)

Lease transaction volume in April 2015 was 435.1 billion yen, increasing 30.4% from the same month in the previous year and turning to positive growth for the first time in 4 months. Increases were reported by all types of equipment including Information and Communication Equipment (22.3% up), which accounted for more than 30% of the market. Industrial Equipment (51.6% up), Factory Equipment (90.9% up) and Medical Equipment (82.1% up), in particular, showed substantial increases.

Trends in Lease Transaction Volume, Leasing Capital Investment and Leasing Percentage to Total Private Capital Investment

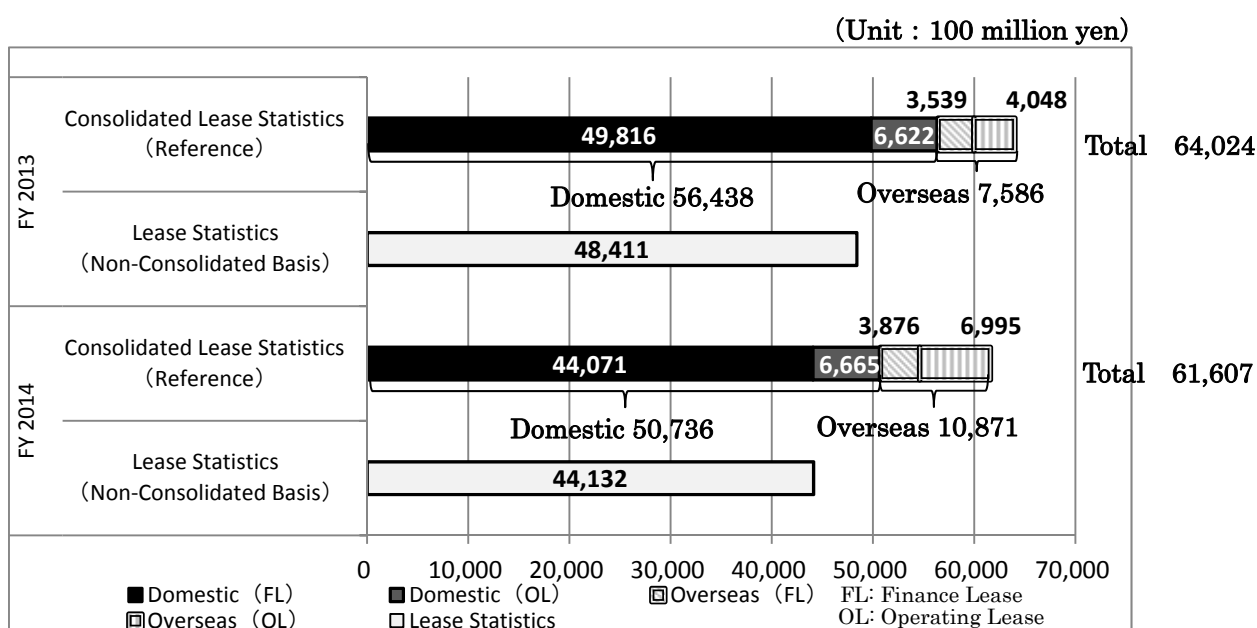


Fiscal Year	2000	2005	2006	2007	2008	2009	2010	2011	2012	2013	2014
Lease Transaction Volume (100million yen)	79,457	79,413	78,677	71,542	60,564	49,219	45,553	45,997	48,754	52,390	48,252
Yearly Change (%)	107.3	104.1	99.1	90.9	84.7	81.3	92.6	101.0	106.0	107.5	92.1
Leasing Capital investment (100 million yen)	69,922	71,017	71,213	63,420	54,444	44,058	41,161	41,682	45,106	48,411	44,132
Yearly Change (%)	106.2	104.3	100.3	89.1	85.8	80.9	93.4	101.3	108.2	107.3	91.2
Leasing Percentage to Total Private Capital Investment(%)	9.70	10.05	9.54	8.25	7.67	7.26	6.64	6.48	6.98	7.10	6.43
Corporation Reserched	304	259	258	248	241	233	233	230	229	223	221

※Total Private Capital Investment, based upon nominal value, is researched by Cabinet Office. The statistic in FY 2014 is preliminary.

(Reference) Consolidated Lease Statistics Survey Results (FY2014)

- ◆ A statistical survey was taken with regard to the transaction status of finance leases and operating leases in Japan and overseas on a consolidated basis including subsidiaries, the results of which are as shown (Based on leasing capital investment amounts [For reference]).

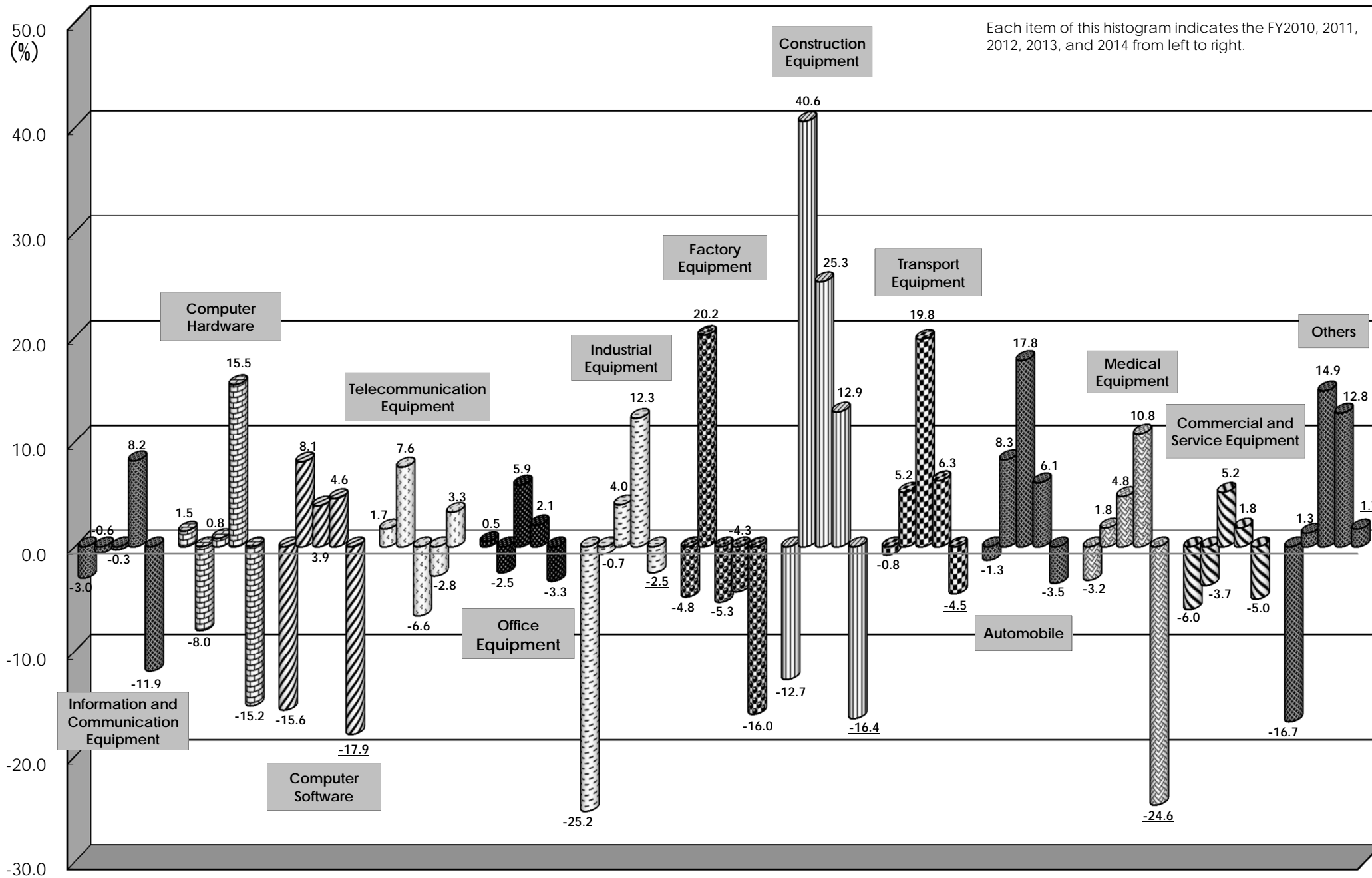


(Tabular statement) Leasing Capital Investment (FY2014)

		Leasing capital investment (100 million yen)	Year-on-year Change (%)	The previous year's total (100 million yen)
Domestic	Finance Lease	44,071	88.5	49,816
	Operating Lease	6,665	100.7	6,622
	Total	50,736	89.9	56,438
Overseas	Finance Lease	3,876	109.5	3,539
	Operating Lease	6,995	172.8	4,048
	Total	10,871	143.3	7,586
Grand Total		61,607	96.2	64,024

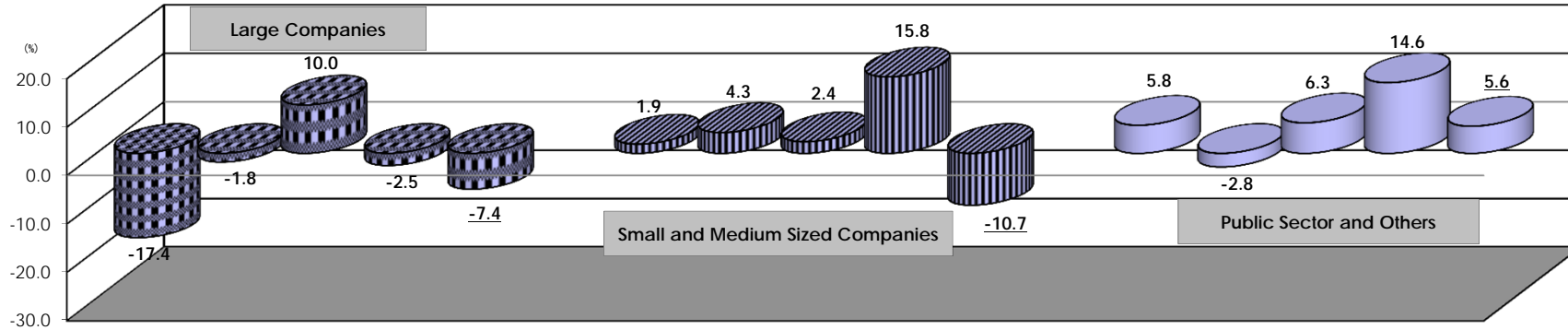
- ※1 Companies subject to the survey were the 27 companies to which the Association's directors and auditors belong (of which 22 companies were included in the statistics).
- ※2 Calculated by adding the survey results, i.e. consolidated lease statistics (after adjustment for duplication) to the non-consolidated lease statistics.
- ※3 Finance leases are lease transactions which meet the two requirements of (1) Cancellation during the lease term is prohibited (Prohibition of early termination) and (2) Nearly the entire amount (more than 90%) of the price of the property and ancillary costs may be recovered through lease payments.
- ※4 Operating leases are lease transactions other than finance leases.

Lease Transaction Volume by Type of Equipment - Yearly Change (%)



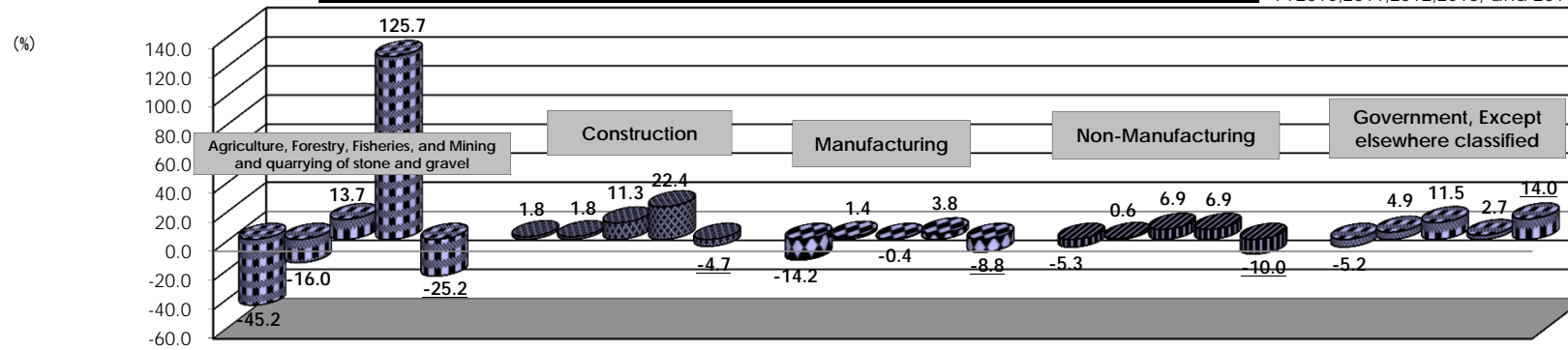
Lease Transaction Volume by Size of Lessee - Yearly Change (%)

Each item of this histogram indicates the FY 2010, 2011, 2012, 2013, and 2014 from left to right.



Lease Transaction Volume by Type of Business of Lessee - Yearly Change (%)

Each item of this histogram indicates the FY 2010, 2011, 2012, 2013, and 2014 from left to right.



Manufacturing		Yearly Change(%)
(1) Manufacture of Food		-15.0
(2) Textile mill, Lumber and wood, and Pulp Products		-17.4
(3) Chemical and allied, Petroleum and coal, Plastic Products		2.1
(4) Iron and Steel, Non-ferrous Metal, and Fabricated Metal Products		-2.3
(5) Production, Electrical, Information and Communication, Transportation Machinery		-2.8
(6) Others		-22.1

Non-Manufacturing		Yearly Change(%)
(1) Electricity, Gas, Heat supply and Water		-24.2
(2) Information and Communications		10.9
(3) Transport and Postal activities		-11.7
(4) Wholesale and Retail trade		-10.1
(5) Finance and Insurance		-13.8
(6) Real estate, Goods rental, and Leasing		8.4
(7) Accommodations, Eating and drinking services		-13.8
(8) Medical, Health care and Welfare		-18.8
(9) Services, N.E.C.		-15.3

Trends in Lease Transaction Volume, Leasing Capital Investment and Leasing Percentage to Total Private Capital Investment

(Unit: 100 million yen, %)

Fiscal Year	Lease Transaction Volume		Leasing Capital Investment		Total Private Capital Investment		Leasing Percentage (B)/(C)
	(A)	Yearly Change	(B)	Yearly Change	(C)	Yearly Change	
1963	7	—	—	—	46,702	—	—
1964	40	571.4	—	—	54,670	117.1	—
1965	67	167.5	—	—	50,883	93.1	—
1966	109	162.7	—	—	65,160	128.1	—
1967	290	266.1	—	—	84,691	130.0	—
1968	450	155.2	—	—	103,499	122.2	—
1969	1,200	266.7	—	—	135,607	131.0	—
1970	2,106	175.5	—	—	156,685	115.5	—
1971	2,793	132.6	—	—	152,967	97.6	—
1972	3,721	133.2	—	—	168,937	110.4	—
1973	5,279	141.9	—	—	224,299	132.8	—
1974	5,290	100.2	—	—	245,518	109.5	—
1975	5,621	106.3	—	—	243,739	99.3	—
1976	8,127	144.6	—	—	256,077	105.1	—
1977	8,604	105.9	—	—	264,534	103.3	—
1978	10,566	122.8	7,820	—	293,354	110.9	2.67
1979	14,611	138.3	10,330	132.2	340,188	116.0	3.04
1980	15,744	107.8	11,550	111.8	396,807	—	2.91
1981	19,327	122.8	14,342	124.2	413,464	104.2	3.47
1982	23,966	124.0	18,872	131.6	420,013	101.6	4.49
1983	29,927	124.9	23,262	123.3	423,263	100.8	5.50
1984	36,758	122.8	28,843	124.0	477,141	112.7	6.04
1985	43,225	117.6	33,520	116.2	545,560	114.3	6.14
1986	47,575	110.1	37,636	112.3	563,462	103.3	6.68
1987	52,967	111.3	42,089	111.8	600,936	106.7	7.00
1988	67,170	126.8	52,226	124.1	718,103	119.5	7.27
1989	70,649	105.2	57,540	110.2	807,038	112.4	7.13
1990	84,152	119.1	65,420	113.7	920,967	114.1	7.10
1991	88,016	104.6	68,843	105.2	929,323	100.9	7.41
1992	77,742	88.3	62,813	91.2	873,450	94.0	7.19
1993	71,825	92.4	59,780	95.2	751,634	86.1	7.95
1994	73,497	102.3	61,631	103.1	713,874	—	8.63
1995	76,214	103.7	65,804	106.8	722,218	101.2	9.11
1996	82,867	108.7	72,238	109.8	745,079	103.2	9.70
1997	79,304	95.7	70,180	97.2	781,900	104.9	8.98
1998	71,445	90.1	63,150	90.0	709,486	90.7	8.90
1999	74,024	103.6	65,862	104.3	698,279	98.4	9.43
2000	79,457	107.3	69,922	106.2	720,764	103.2	9.70
2001	77,337	97.3	69,148	98.9	676,867	93.9	10.22
2002	73,743	95.4	66,052	95.5	644,187	95.2	10.25
2003	73,778	100.0	65,917	99.8	658,481	102.2	10.01
2004	76,252	103.4	68,086	103.3	678,469	103.0	10.04
2005	79,413	104.1	71,017	104.3	706,357	104.1	10.05
2006	78,677	99.1	71,213	100.3	746,507	105.7	9.54
2007	71,542	90.9	63,420	89.1	768,317	102.9	8.25
2008	60,564	84.7	54,444	85.8	710,147	92.4	7.67
2009	49,219	81.3	44,058	80.9	607,180	85.5	7.26
2010	45,553	92.6	41,161	93.4	619,451	102.0	6.64
2011	45,997	101.0	41,682	101.3	643,167	103.8	6.48
2012	48,754	106.0	45,106	108.2	649,453	101.0	6.95
2013	52,390	107.5	48,411	107.3	681,553	104.9	7.10
2014	48,252	92.1	44,132	91.2	686,777	100.8	6.43

The statistic in FY 2014 is preliminary (released on May 20)

Trends in Lease Transaction Volume by Type of Equipment

(Unit: in 100 million yen)

	FY 2011		FY 2012		FY 2013		FY 2014		Yearly Change				
	Leasing Volume	Component Ratio(%)	Leasing Volume	Component Ratio (%)	Leasing Volume	Component Ratio (%)	Leasing Volume	Component Ratio (%)	11/10	12/11	13/12	14/13	
1	Information and Communication Equipment	16,364	35.6	16,316	33.5	17,662	33.7	15,555	32.2	99.4	99.7	108.2	88.1
	Computer Hardware	8,079	17.6	8,147	16.7	9,407	18.0	7,980	16.5	92.0	100.8	115.5	84.8
	Computer Software	4,135	9.0	4,296	8.8	4,492	8.6	3,687	7.6	108.1	103.9	104.6	82.1
	Telecommunication Equipment	4,149	9.0	3,874	7.9	3,764	7.2	3,888	8.1	107.6	93.4	97.2	103.3
2	Office Equipment	4,225	9.2	4,473	9.2	4,568	8.7	4,417	9.2	97.5	105.9	102.1	96.7
3	Industrial Equipment	4,815	10.5	5,007	10.3	5,623	10.7	5,480	11.4	99.3	104.0	112.3	97.5
4	Factory Equipment	1,150	2.5	1,089	2.2	1,042	2.0	875	1.8	120.2	94.7	95.7	84.0
5	Construction Equipment	1,272	2.8	1,594	3.3	1,800	3.4	1,505	3.1	140.6	125.3	112.9	83.6
6	Transport Equipment	5,189	11.3	6,218	12.8	6,610	12.6	6,315	13.1	105.2	119.8	106.3	95.5
	Automobile	4,373	9.5	5,150	10.6	5,466	10.4	5,276	10.9	108.3	117.8	106.1	96.5
	Vessel	31	0.1	101	0.2	35	0.1	16	0.0	77.9	324.3	34.4	44.7
7	Medical Equipment	2,604	5.7	2,728	5.6	3,022	5.8	2,278	4.7	101.8	104.8	110.8	75.4
8	Commercial and Service Equipment	6,181	13.4	6,504	13.3	6,624	12.6	6,294	13.0	96.3	105.2	101.8	95.0
	Commercial Equipment	3,857	8.4	4,055	8.3	4,293	8.2	4,371	9.1	100.9	105.1	105.9	101.8
9	Others	4,197	9.1	4,824	9.9	5,439	10.4	5,533	11.5	101.3	114.9	112.8	101.7
	Physical and Chemical Equipment	572	1.2	596	1.2	575	1.1	490	1.0	93.5	104.2	96.4	85.3
Total		45,997	100.0	48,754	100.0	52,390	100.0	48,252	100.0	101.0	106.0	107.5	92.1
Corporations researched		230		229		223		221					

Trends in Lease Transaction Volume by Size of Lessee

(Unit: in 100 million yen)

		FY 2011		FY 2012		FY 2013		FY 2014		Yearly Change			
		Leasing Volume	Component Ratio(%)	Leasing Volume	Component Ratio (%)	Leasing Volume	Component Ratio (%)	Leasing Volume	Component Ratio (%)	11/10	12/11	13/12	14/13
1	Large Companies	19,935	43.3	21,921	45.0	21,366	40.8	19,796	41.0	98.2	110.0	97.5	92.6
	Listed companies	10,269	22.3	10,852	22.3	9,545	18.2	8,418	17.4	104.0	105.7	88.0	88.2
2	Small and Medium Sized Companies	22,307	48.5	22,841	46.8	26,448	50.5	23,628	49.0	104.3	102.4	115.8	89.3
3	Public Sector and Others	3,756	8.2	3,993	8.2	4,575	8.7	4,829	10.0	97.2	106.3	114.6	105.6
Total		45,997	100.0	48,754	100.0	52,390	100.0	48,252	100.0	101.0	106.0	107.5	92.1

Trends in Lease Transaction Volume by Lessee's Business Type

(Unit: in 100 million yen)

		FY 2011		FY 2012		FY 2013		FY 2014		Yearly Change			
		Leasing Volume	Component Ratio(%)	Leasing Volume	Component Ratio (%)	Leasing Volume	Component Ratio (%)	Leasing Volume	Component Ratio (%)	11/10	12/11	13/12	14/13
1	Agriculture, Forestry, Fisheries, and Mining and quarrying of stone and gravel	276	0.6	313	0.6	707	1.3	529	1.1	84.0	113.7	225.7	74.8
2	Construction	2,003	4.4	2,229	4.6	2,728	5.2	2,601	5.4	101.8	111.3	122.4	95.3
3	Manufacturing	9,345	20.3	9,311	19.1	9,664	18.4	8,810	18.3	101.4	99.6	103.8	91.2
	Manufacture of Food	1,425	3.1	1,668	3.4	1,679	3.2	1,428	3.0	100.8	117.1	100.7	85.0
	Textile mill, Lumber and wood, and Pulp Products	810	1.8	801	1.6	845	1.6	698	1.4	87.4	99.0	105.5	82.6
	Chemical and allied, Petroleum and coal, Plastic Products	940	2.0	980	2.0	914	1.7	933	1.9	93.2	104.3	93.3	102.1
	Iron and Steel, Non-ferrous Metal, and Fabricated Metal Products	1,122	2.4	1,056	2.2	1,106	2.1	1,081	2.2	98.9	94.2	104.8	97.7
	Production, Electrical, Information and Communication, Transportation Machinery	3,771	8.2	3,424	7.0	3,534	6.7	3,436	7.1	111.0	90.8	103.2	97.2
	Others	1,279	2.8	1,382	2.8	1,585	3.0	1,235	2.6	95.4	108.1	114.6	77.9
4	Non-manufacturing	30,864	67.1	32,987	67.7	35,272	67.3	31,734	65.8	100.6	106.9	106.9	90.0
	Electricity, Gas, Heat supply and Water	310	0.7	589	1.2	770	1.5	584	1.2	69.5	189.9	130.7	75.8
	Information and Communications	2,823	6.1	2,578	5.3	2,279	4.4	2,528	5.2	119.6	91.3	88.4	110.9
	Transport and Postal activities	2,743	6.0	3,032	6.2	3,152	6.0	2,784	5.8	98.4	110.5	103.9	88.3
	Wholesale and Retail trade	8,420	18.3	8,877	18.2	10,199	19.5	9,170	19.0	106.5	105.4	114.9	89.9
	Finance and Insurance	1,118	2.4	1,341	2.7	1,361	2.6	1,174	2.4	73.6	119.9	101.5	86.2
	Real estate, Goods rental, and Leasing	2,554	5.6	3,532	7.2	3,308	6.3	3,587	7.4	90.9	138.3	93.7	108.4
	Accommodations, Eating and drinking services	1,031	2.2	1,079	2.2	1,123	2.1	968	2.0	104.7	104.7	104.1	86.2
	Medical, Health care and Welfare	3,389	7.4	3,477	7.1	4,001	7.6	3,249	6.7	107.9	102.6	115.1	81.2
Services, N.E.C.	8,476	18.4	8,483	17.4	9,078	17.3	7,692	15.9	97.1	100.1	107.0	84.7	
5	Government, Except elsewhere classified	3,509	7.6	3,914	8.0	4,019	7.7	4,579	9.5	104.9	111.5	102.7	114.0
Total		45,997	100.0	48,754	100.0	52,390	100.0	48,252	100.0	101.0	106.0	107.5	92.1

Leasing Volume by Type of Equipment (Apr. 2015)

		Leasing cases	Component Ratio (%)	Year-on-year Change (%)	Leasing Volume (in million yen)	Component Ratio (%)	Year-on-year Change (%)
1	Information and Communication Equipment	66,810	41.3	91.3	140,553.7	32.3	122.3
	Computer Hardware	(45,398)	(28.1)	(82.2)	(73,854.2)	(17.0)	(115.3)
	Computer Software	(6,916)	(4.3)	(123.4)	(37,989.6)	(8.7)	(128.5)
	Telecommunication Equipment	(14,496)	(9.0)	(117.3)	(28,709.9)	(6.6)	(134.7)
2	Office Equipment	33,062	20.4	139.8	40,752.3	9.4	129.0
3	Industrial Equipment	5,385	3.3	14.2	38,558.8	8.9	151.6
4	Factory Equipment	455	0.3	198.7	6,814.8	1.6	190.9
5	Construction Equipment	858	0.5	76.3	8,877.6	2.0	104.4
6	Transport Equipment	17,450	10.8	116.9	50,570.3	11.6	125.8
	Automobile	(15,742)	(9.7)	(114.2)	(45,808.0)	(10.5)	(132.0)
	Vessel	(6)	(0.0)	(100.0)	(265.0)	(0.1)	(120.5)
7	Medical Equipment	5,602	3.5	181.0	25,201.9	5.8	182.1
8	Commercial and Service Equipment	22,345	13.8	109.4	54,093.9	12.4	124.2
	Commercial Equipment	(17,669)	(10.9)	(106.5)	(35,150.7)	(8.1)	(119.6)
9	Others	9,843	6.1	58.2	69,693.7	16.0	134.1
	Physical and Chemical Equipment	(1,370)	(0.8)	(168.3)	(5,008.6)	(1.2)	(149.4)
Total		161,810	100.0	84.5	435,117.0	100.0	130.4

【Corporations researched: 215】

Changes in Lease Transaction Volume

Unit: in 100 Million Yen, Yearly Changes: Parenthesized

	Total	Information and Communication Equipment				Office Equipment	Industry Equipment	Factory Equipment	Construction Equipment	Transport Equipment		Medical Equipment	Commercial and Service Equipment		Others			
		Computer Hardware	Computer Software	Telecommunication Equipment	Automobile					Vessel	Commercial Equipment		Physical and Chemical Equipment					
Calendar Year	2012	48,405 (7.1)	16,247 (0.4)	8,191 (3.4)	4,176 (5.2)	3,880 (▲ 9.7)	4,501 (8.5)	4,979 (5.0)	1,149 (2.4)	1,477 (33.3)	6,172 (25.4)	5,282 (25.5)	67 (287.2)	2,768 (10.9)	6,495 (5.0)	3,991 (5.9)	4,616 (8.2)	619 (6.2)
	2013	49,657 (2.6)	15,923 (▲ 2.0)	8,287 (1.2)	4,102 (▲ 1.8)	3,533 (▲ 8.9)	4,447 (▲ 1.2)	5,620 (12.9)	948 (▲ 17.4)	1,710 (15.8)	6,562 (6.3)	5,359 (1.5)	28 (▲ 58.2)	2,726 (▲ 1.5)	6,348 (▲ 2.3)	4,054 (1.6)	5,373 (16.4)	583 (▲ 5.8)
	2014	49,786 (0.3)	16,466 (3.4)	8,820 (6.4)	4,125 (0.6)	3,520 (▲ 0.4)	4,503 (1.3)	4,953 (▲ 11.9)	981 (3.5)	1,560 (▲ 8.8)	6,429 (▲ 2.0)	5,389 (0.6)	21 (▲ 24.7)	2,756 (1.1)	6,438 (1.4)	4,231 (4.4)	5,700 (6.1)	535 (▲ 8.2)
Fiscal Year (Final Figures)	2012	48,754 (6.0)	16,316 (▲ 0.3)	8,147 (0.8)	4,296 (3.9)	3,874 (▲ 6.6)	4,473 (5.9)	5,007 (4.0)	1,089 (▲ 5.3)	1,594 (25.3)	6,218 (19.8)	5,150 (17.8)	101 (224.3)	2,728 (4.8)	6,504 (5.2)	4,055 (5.1)	4,824 (14.9)	596 (4.2)
	2013	52,390 (7.5)	17,662 (8.2)	9,407 (15.5)	4,492 (4.6)	3,764 (▲ 2.8)	4,568 (2.1)	5,623 (12.3)	1,042 (▲ 4.3)	1,800 (12.9)	6,610 (6.3)	5,466 (6.1)	35 (▲ 65.6)	3,022 (10.8)	6,624 (1.8)	4,293 (5.9)	5,439 (12.8)	575 (▲ 3.6)
	2014	48,252 (▲ 7.9)	15,555 (▲ 11.9)	7,980 (▲ 15.2)	3,687 (▲ 17.9)	3,888 (3.3)	4,417 (▲ 3.3)	5,480 (▲ 2.5)	875 (▲ 16.0)	1,505 (▲ 16.4)	6,315 (▲ 4.5)	5,276 (▲ 3.5)	16 (▲ 55.3)	2,278 (▲ 24.6)	6,294 (▲ 5.0)	4,371 (1.8)	5,533 (1.7)	490 (▲ 14.7)
Half Year	'13 4-9	24,310 (2.9)	7,530 (▲ 2.7)	3,778 (▲ 2.6)	1,952 (1.0)	1,800 (▲ 6.8)	2,264 (1.6)	3,149 (22.9)	431 (▲ 20.7)	749 (15.1)	3,057 (0.9)	2,602 (▲ 0.1)	16 (▲ 11.1)	1,363 (▲ 0.8)	3,196 (▲ 4.5)	2,079 (0.7)	2,569 (20.2)	249 (▲ 16.2)
	10-3	28,661 (13.4)	9,911 (18.0)	5,544 (31.1)	2,589 (13.4)	1,778 (▲ 5.9)	2,351 (4.0)	2,744 (6.8)	603 (9.1)	1,080 (28.5)	3,599 (6.5)	2,878 (4.7)	17 (▲ 56.4)	1,821 (31.3)	3,395 (8.8)	2,123 (8.6)	3,157 (13.8)	327 (▲ 5.1)
	'14 4-9	21,533 (▲ 11.4)	6,703 (▲ 11.0)	3,472 (▲ 8.1)	1,562 (▲ 20.0)	1,669 (▲ 7.3)	2,171 (▲ 4.1)	2,111 (▲ 33.0)	382 (▲ 11.2)	602 (▲ 19.7)	2,944 (▲ 3.7)	2,544 (▲ 2.3)	9 (▲ 44.1)	996 (▲ 27.0)	3,112 (▲ 2.7)	2,093 (0.7)	2,513 (▲ 2.2)	218 (▲ 12.3)
	10-3	26,618 (▲ 7.1)	8,694 (▲ 12.3)	4,436 (▲ 20.0)	2,177 (▲ 15.9)	2,081 (17.1)	2,234 (▲ 5.0)	3,336 (21.6)	497 (▲ 17.7)	821 (▲ 24.0)	3,355 (▲ 6.8)	2,822 (▲ 1.9)	6 (▲ 61.6)	1,264 (▲ 30.6)	3,150 (▲ 7.2)	2,146 (1.1)	3,268 (3.5)	271 (▲ 17.2)
Quarter Year	'13 4-6	12,223 (5.4)	3,761 (▲ 3.5)	1,793 (▲ 5.1)	954 (▲ 6.5)	1,014 (2.7)	1,170 (2.1)	1,746 (69.6)	180 (▲ 29.7)	343 (21.7)	1,461 (▲ 1.5)	1,260 (1.3)	7 (8.2)	722 (5.0)	1,524 (▲ 12.4)	1,003 (▲ 6.9)	1,318 (22.0)	123 (▲ 24.3)
	7-9	12,087 (0.6)	3,769 (▲ 2.0)	1,985 (▲ 0.2)	998 (9.4)	786 (▲ 16.7)	1,094 (1.0)	1,403 (▲ 8.4)	251 (▲ 12.7)	406 (10.0)	1,597 (3.2)	1,342 (▲ 1.4)	9 (▲ 21.7)	642 (▲ 6.7)	1,673 (4.1)	1,076 (9.0)	1,252 (18.4)	126 (▲ 6.3)
	10-12	11,954 (0.5)	3,728 (▲ 0.2)	2,129 (15.2)	838 (▲ 13.6)	762 (▲ 17.0)	1,042 (▲ 7.0)	1,152 (▲ 7.9)	226 (▲ 13.6)	556 (27.8)	1,667 (8.2)	1,331 (0.5)	7 (▲ 80.0)	650 (▲ 3.7)	1,641 (1.9)	1,027 (1.9)	1,293 (2.3)	142 (▲ 6.7)
	1-3	16,707 (24.7)	6,183 (32.5)	3,415 (43.5)	1,751 (33.4)	1,016 (4.6)	1,309 (14.7)	1,592 (20.8)	378 (29.5)	524 (29.2)	1,932 (5.1)	1,547 (8.5)	10 (95.4)	1,172 (64.3)	1,754 (16.1)	1,097 (15.7)	1,864 (23.4)	185 (▲ 3.8)
	'14 4-6	9,925 (▲ 18.8)	3,095 (▲ 17.7)	1,843 (▲ 8.4)	688 (▲ 27.9)	764 (▲ 24.7)	1,005 (▲ 14.1)	786 (▲ 55.0)	147 (▲ 18.2)	282 (▲ 23.5)	1,350 (▲ 7.5)	1,175 (▲ 8.8)	5 (▲ 36.3)	419 (▲ 41.9)	1,443 (▲ 5.3)	1,005 (0.2)	1,416 (7.5)	101 (▲ 17.5)
	7-9	11,608 (▲ 4.0)	3,608 (▲ 4.3)	1,829 (▲ 7.8)	874 (▲ 12.4)	905 (15.1)	1,166 (6.6)	1,324 (▲ 5.6)	235 (▲ 6.3)	339 (▲ 16.5)	1,593 (▲ 0.2)	1,368 (2.0)	5 (▲ 50.0)	576 (▲ 10.2)	1,668 (▲ 0.3)	1,088 (1.0)	1,097 (▲ 12.4)	117 (▲ 7.2)
	10-12	11,546 (▲ 3.4)	3,581 (▲ 4.0)	1,933 (9.2)	812 (▲ 3.1)	835 (9.7)	1,023 (▲ 1.8)	1,250 (8.5)	221 (▲ 2.0)	435 (▲ 21.8)	1,553 (▲ 6.8)	1,299 (▲ 2.4)	2 (▲ 70.0)	589 (▲ 9.3)	1,572 (▲ 4.2)	1,041 (1.4)	1,323 (2.3)	132 (▲ 7.2)
	1-3	15,072 (▲ 9.8)	5,114 (▲ 17.3)	2,503 (▲ 26.7)	1,365 (▲ 22.1)	1,246 (22.6)	1,211 (▲ 7.5)	2,086 (31.0)	276 (▲ 27.1)	386 (▲ 26.3)	1,803 (▲ 6.7)	1,523 (▲ 1.5)	4 (▲ 56.0)	675 (▲ 42.4)	1,577 (▲ 10.1)	1,105 (0.8)	1,945 (4.3)	139 (▲ 24.8)
Monthly	'14 4	3,336 (▲ 20.4)	1,150 (▲ 19.9)	641 (▲ 13.5)	296 (▲ 33.7)	213 (▲ 13.8)	316 (▲ 27.9)	254 (▲ 20.1)	36 (▲ 40.3)	85 (▲ 29.1)	402 (▲ 18.2)	347 (▲ 18.7)	2 (▲ 12.2)	138 (▲ 52.4)	435 (▲ 20.9)	294 (▲ 18.9)	520 (6.1)	34 (▲ 35.1)
	5	2,842 (▲ 29.9)	837 (▲ 12.5)	436 (▲ 14.0)	186 (▲ 18.0)	215 (▲ 3.6)	298 (▲ 12.4)	234 (▲ 78.7)	45 (▲ 23.7)	84 (▲ 21.9)	450 (3.1)	367 (▲ 6.8)	0 (▲ 93.8)	125 (▲ 46.5)	453 (▲ 8.6)	319 (▲ 1.8)	316 (▲ 2.5)	27 (▲ 17.7)
	6	3,746 (▲ 5.8)	1,108 (▲ 19.1)	566 (3.8)	207 (▲ 26.6)	336 (▲ 38.2)	390 (▲ 0.3)	298 (▲ 9.1)	67 (8.7)	93 (▲ 19.1)	499 (▲ 6.4)	461 (4.9)	2 (▲ 37.1)	156 (▲ 21.0)	555 (16.2)	392 (24.4)	580 (15.3)	41 (6.2)
	7	3,391 (▲ 5.7)	958 (▲ 9.9)	527 (▲ 2.5)	204 (▲ 30.4)	228 (▲ 1.0)	375 (3.5)	347 (▲ 18.5)	61 (▲ 25.2)	90 (▲ 25.7)	543 (7.3)	452 (▲ 2.2)	3 (▲ 34.9)	171 (▲ 7.3)	542 (▲ 3.1)	353 (▲ 1.2)	304 (3.8)	34 (▲ 10.4)
	8	3,298 (▲ 6.1)	995 (▲ 6.6)	483 (▲ 11.6)	295 (▲ 6.8)	217 (7.1)	324 (2.3)	361 (▲ 17.2)	70 (22.7)	104 (▲ 11.5)	410 (▲ 0.8)	372 (0.1)	1 (▲ 8.2)	149 (▲ 26.2)	518 (▲ 4.6)	334 (▲ 4.2)	367 (2.0)	38 (11.2)
	9	4,919 (▲ 1.2)	1,655 (0.9)	820 (▲ 8.8)	376 (▲ 3.5)	460 (30.3)	467 (12.6)	617 (13.8)	104 (▲ 7.3)	146 (▲ 13.2)	640 (▲ 5.5)	544 (7.2)	1 (▲ 73.7)	256 (0.4)	608 (6.7)	400 (8.2)	426 (▲ 28.9)	44 (▲ 16.6)
	10	3,705 (▲ 9.2)	1,251 (▲ 6.0)	707 (▲ 9.2)	315 (▲ 4.5)	228 (3.1)	362 (▲ 0.7)	375 (▲ 14.2)	72 (17.3)	145 (▲ 23.2)	485 (▲ 1.5)	433 (▲ 2.9)	0 (▲ 52.9)	182 (▲ 20.0)	498 (1.8)	322 (▲ 1.7)	334 (▲ 31.6)	54 (7.0)
	11	3,267 (▲ 10.0)	952 (▲ 14.8)	490 (▲ 26.6)	190 (▲ 19.8)	272 (28.3)	312 (▲ 3.9)	307 (▲ 3.0)	61 (▲ 16.7)	134 (▲ 25.6)	526 (▲ 0.1)	413 (▲ 7.9)	0 (▲ 83.3)	178 (▲ 9.4)	465 (▲ 10.2)	321 (4.8)	333 (▲ 11.9)	35 (▲ 5.2)
	12	4,574 (7.8)	1,378 (7.5)	736 (7.8)	307 (13.5)	336 (2.1)	349 (▲ 1.1)	567 (42.5)	88 (▲ 3.2)	156 (▲ 16.6)	542 (▲ 16.4)	453 (3.6)	1 (▲ 65.3)	229 (1.5)	609 (▲ 4.0)	398 (1.3)	656 (53.9)	43 (▲ 21.6)
	'15 1	3,660 (▲ 3.5)	1,423 (0.0)	779 (▲ 0.3)	433 (5.9)	211 (▲ 9.0)	347 (13.0)	371 (23.9)	66 (11.1)	109 (▲ 20.7)	382 (▲ 8.8)	348 (▲ 0.2)	2 (357.4)	176 (▲ 27.5)	460 (0.7)	327 (9.2)	328 (▲ 27.4)	38 (▲ 25.6)
	2	3,776 (▲ 0.8)	1,107 (▲ 16.3)	569 (▲ 22.8)	294 (▲ 20.8)	244 (14.1)	334 (4.6)	641 (50.5)	82 (▲ 1.6)	101 (▲ 22.6)	553 (▲ 12.5)	435 (5.2)	1 (▲ 36.0)	156 (▲ 18.7)	402 (6.1)	279 (11.3)	400 (23.1)	40 (5.3)
	3	7,635 (▲ 16.1)	2,583 (▲ 24.9)	1,155 (▲ 39.1)	637 (▲ 34.4)	791 (38.7)	529 (▲ 22.5)	1,074 (23.9)	128 (▲ 45.6)	177 (▲ 31.2)	868 (▲ 1.6)	741 (▲ 5.6)	2 (▲ 78.9)	343 (▲ 53.5)	715 (▲ 22.1)	499 (▲ 8.6)	1,217 (11.9)	62 (▲ 36.2)
	4	4,351 (30.4)	1,406 (22.3)	739 (15.3)	380 (28.5)	287 (34.7)	408 (29.0)	386 (51.6)	68 (90.9)	89 (4.4)	506 (25.8)	458 (32.0)	3 (20.5)	252 (82.1)	541 (24.2)	352 (19.6)	700 (34.1)	50 (49.4)