

Lease Statistics (FY2015)

[Key Points]

- Total lease transaction volume: 5,039.3 billion yen, increased by 4.4% compared with the volume in FY2014.
- Leasing capital investment: 4,721.3 billion yen, increased by 7.0% compared with FY2014.
- Leasing percentage: 6.76%
- Components of total lease transaction volume: “Industrial Equipment”, “Factory Equipment” “Others” increased double-digit. “Small and Medium Sized Companies” and “Non-Manufacturing” increased for the first time in 2 years.
- Leasing capital investment (Consolidated basis): 6,733.9 billion yen, increased by 9.3% compared with FY2014 (Increased by 11.0% for overseas).

◆ Total Lease Transaction Volume and Leasing Capital Investment

Total lease transaction volume for FY2015 was 5,039.3 billion yen, a increase of 4.4% compared with FY2014; and leasing capital investment was 4,721.3 billion yen, a increase of 7.0% compared with FY2014, representing rise for the first time in 2 years since FY2013.

◆ Leasing percentage

Leasing percentage (ratio of leasing capital investment to the total private capital investment) in FY2015 was 6.76%; i.e. approximately 7% of private capital investments were made through leasing.

◆ Lease Transaction Volume by Type of Equipment

Industrial Equipment (12.4% up), Factory Equipment (29.2% up) and Others (22.5% up) had showed a double-digit increase. Information and Communication Equipment (2.5% up) and Medical Equipment (9.1% up) had also showed positive growth. On the other hand, Office Equipment (2.7% down), Construction Equipment (8.8% down), Transport Equipment (3.4% down) and Commercial and Service Equipment (2.7% down) had showed negative growth respectively.

◆ Lease Transaction Volume by Size of Lessee and Lessee’s Business Type

“Small and Medium Sized Companies” (companies with capital of 0.1 billion yen and less or solo proprietors), which accounted for approximately 50% of total lessees showed a rise (10.2% up) for the first time in 2 years and “Large Companies” (companies with capital of over 0.1 billion yen) declined (3.7% down) for the third year in a row. “Manufacturing” (11.5% up) and “Non-Manufacturing” (2.8% up) had increased for the first time in 2 years.

◆ (Reference) Consolidated Lease Statistics (FY2015)

Leasing capital investment for FY2015 on a consolidated basis was 6,733.9 billion yen, a increase of 9.3% compared with FY2014. Components were 5,527.7 billion yen for domestic leasing (9.0% up) and 1,206.2 billion yen for overseas leasing (11.0% up).

Lease Statistics (April 2016)

The lease transaction volume in April 2016 is 399.2 billion yen, decreased by 8.3%, compared with the same period of the last year. The lease transaction volume had showed negative growth in a row of 3 months. With regard to the type of equipment, Medical Equipment (12.6% up) and Commercial and Service Equipment (4.1% up) had turned to positive growth. On the other hand, Information and Communication Equipment (4.4% down), Office Equipment (4.6% down), Industrial Equipment (7.0% down), Factory Equipment (21.4% down), Construction Equipment (7.8% down) and Transport Equipment (5.8% down) had showed negative growth respectively.

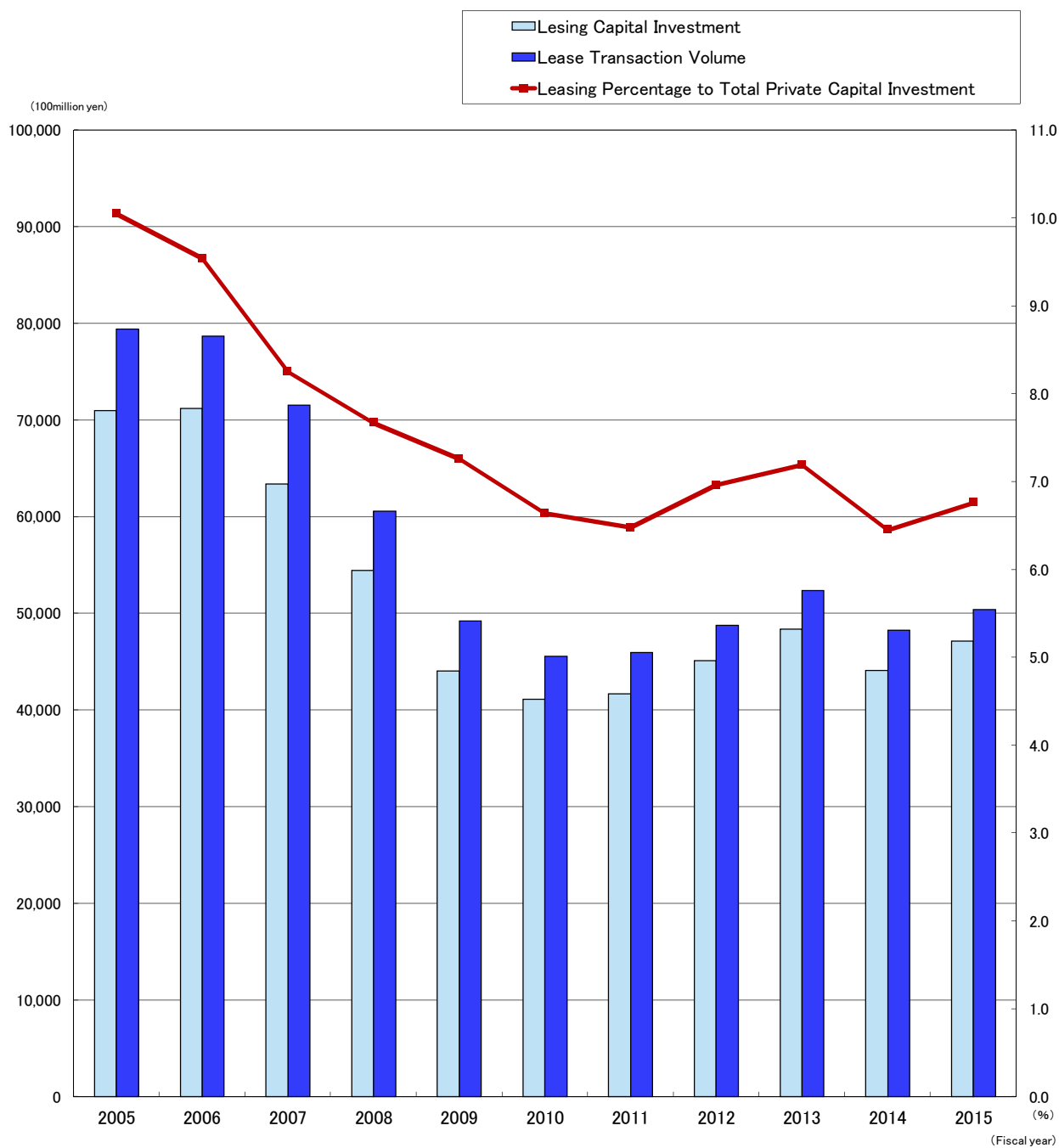
Trends in Lease Transaction Volume, Leasing Capital Investment and Leasing Percentage to Total Private Capital Investment

(Unit: 100 million yen, %)

Fiscal Year	Lease Transaction Volume		Leasing Capital Investment		Total Private Capital Investment		Leasing Percentage
	(A)	Yearly Change	(B)	Yearly Change	(C)	Yearly Change	(B)/(C)
1963	7	—	—	—	46,702	—	—
1964	40	571.4	—	—	54,670	117.1	—
1965	67	167.5	—	—	50,883	93.1	—
1966	109	162.7	—	—	65,160	128.1	—
1967	290	266.1	—	—	84,691	130.0	—
1968	450	155.2	—	—	103,499	122.2	—
1969	1,200	266.7	—	—	135,607	131.0	—
1970	2,106	175.5	—	—	156,685	115.5	—
1971	2,793	132.6	—	—	152,967	97.6	—
1972	3,721	133.2	—	—	168,937	110.4	—
1973	5,279	141.9	—	—	224,299	132.8	—
1974	5,290	100.2	—	—	245,518	109.5	—
1975	5,621	106.3	—	—	243,739	99.3	—
1976	8,127	144.6	—	—	256,077	105.1	—
1977	8,604	105.9	—	—	264,534	103.3	—
1978	10,566	122.8	7,820	—	293,354	110.9	2.67
1979	14,611	138.3	10,330	132.2	340,188	116.0	3.04
1980	15,744	107.8	11,550	111.8	396,807	—	2.91
1981	19,327	122.8	14,342	124.2	413,464	104.2	3.47
1982	23,966	124.0	18,872	131.6	420,013	101.6	4.49
1983	29,927	124.9	23,262	123.3	423,263	100.8	5.50
1984	36,758	122.8	28,843	124.0	477,141	112.7	6.04
1985	43,225	117.6	33,520	116.2	545,560	114.3	6.14
1986	47,575	110.1	37,636	112.3	563,462	103.3	6.68
1987	52,967	111.3	42,089	111.8	600,936	106.7	7.00
1988	67,170	126.8	52,226	124.1	718,103	119.5	7.27
1989	70,649	105.2	57,540	110.2	807,038	112.4	7.13
1990	84,152	119.1	65,420	113.7	920,967	114.1	7.10
1991	88,016	104.6	68,843	105.2	929,323	100.9	7.41
1992	77,742	88.3	62,813	91.2	873,450	94.0	7.19
1993	71,825	92.4	59,780	95.2	751,634	86.1	7.95
1994	73,497	102.3	61,631	103.1	713,874	—	8.63
1995	76,214	103.7	65,804	106.8	722,218	101.2	9.11
1996	82,867	108.7	72,238	109.8	745,079	103.2	9.70
1997	79,304	95.7	70,180	97.2	781,900	104.9	8.98
1998	71,445	90.1	63,150	90.0	709,486	90.7	8.90
1999	74,024	103.6	65,862	104.3	698,279	98.4	9.43
2000	79,457	107.3	69,922	106.2	720,764	103.2	9.70
2001	77,337	97.3	69,148	98.9	676,867	93.9	10.22
2002	73,743	95.4	66,052	95.5	644,187	95.2	10.25
2003	73,778	100.0	65,917	99.8	658,481	102.2	10.01
2004	76,252	103.4	68,086	103.3	678,469	103.0	10.04
2005	79,413	104.1	71,017	104.3	706,357	104.1	10.05
2006	78,677	99.1	71,213	100.3	746,507	105.7	9.54
2007	71,542	90.9	63,420	89.1	768,317	102.9	8.25
2008	60,564	84.7	54,444	85.8	710,147	92.4	7.67
2009	49,219	81.3	44,058	80.9	607,180	85.5	7.26
2010	45,553	92.6	41,161	93.4	619,451	102.0	6.64
2011	45,997	101.0	41,682	101.3	643,167	103.8	6.48
2012	48,754	106.0	45,106	108.2	647,979	100.7	6.96
2013	52,390	107.5	48,411	107.3	673,554	103.9	7.19
2014	48,252	92.1	44,132	91.2	683,908	101.5	6.45
2015	50,393	104.4	47,213	107.0	697,936	102.1	6.76

The statistic in FY 2015 is preliminary (released on May 18)

Trends in Lease Transaction Volume, Leasing Capital Investment and Leasing Percentage to Total Private Capital Investment



Fiscal year	2005	2006	2007	2008	2009	2010	2011	2012	2013	2014	2015
Lease Transaction Volume (100million yen)	79,413	78,677	71,542	60,564	49,219	45,553	45,997	48,754	52,390	48,252	50,393
Yearly Change (%)	104.1	99.1	90.9	84.7	81.3	92.6	101.0	106.0	107.5	92.1	104.4
Lease Capital Investment (100million yen)	71,017	71,213	63,420	54,444	44,058	41,161	41,682	45,106	48,411	44,132	47,213
Yearly Change (%)	104.3	100.3	89.1	85.8	80.9	93.4	101.3	108.2	107.3	91.2	107.0
Leasing Percentage to Total Private Capital Investment (%)	10.05	9.54	8.25	7.67	7.26	6.64	6.48	6.96	7.19	6.45	6.76
Corporation Reserched	259	258	248	241	233	233	230	229	223	221	219

※Total Private Capital Investment, based upon nominal value, is researched by Cabinet Office. The statistic in FY 2015 is preliminary.

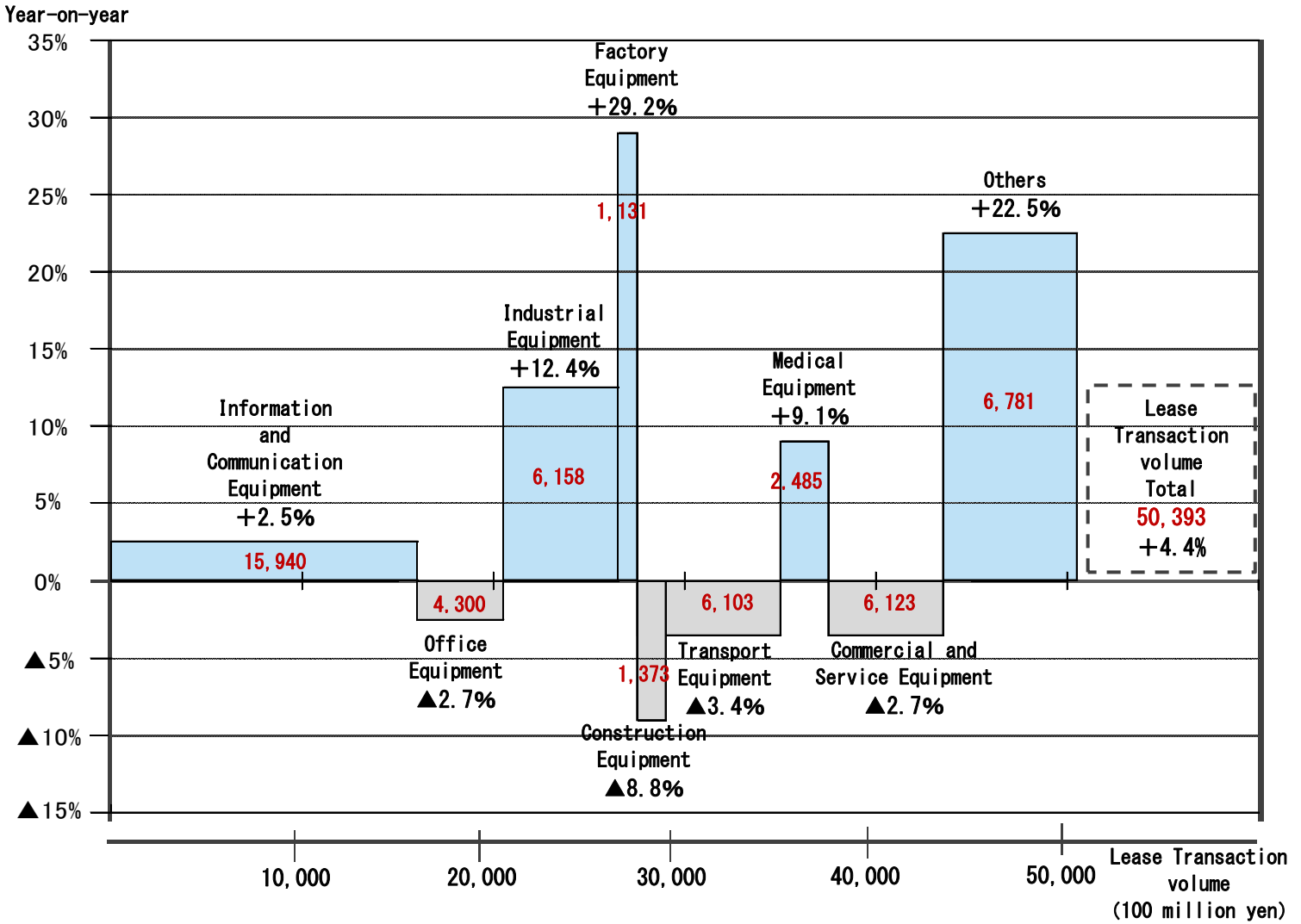
Trends in Lease Transaction Volume by Type of Equipment

(Unit: in 100 million yen)

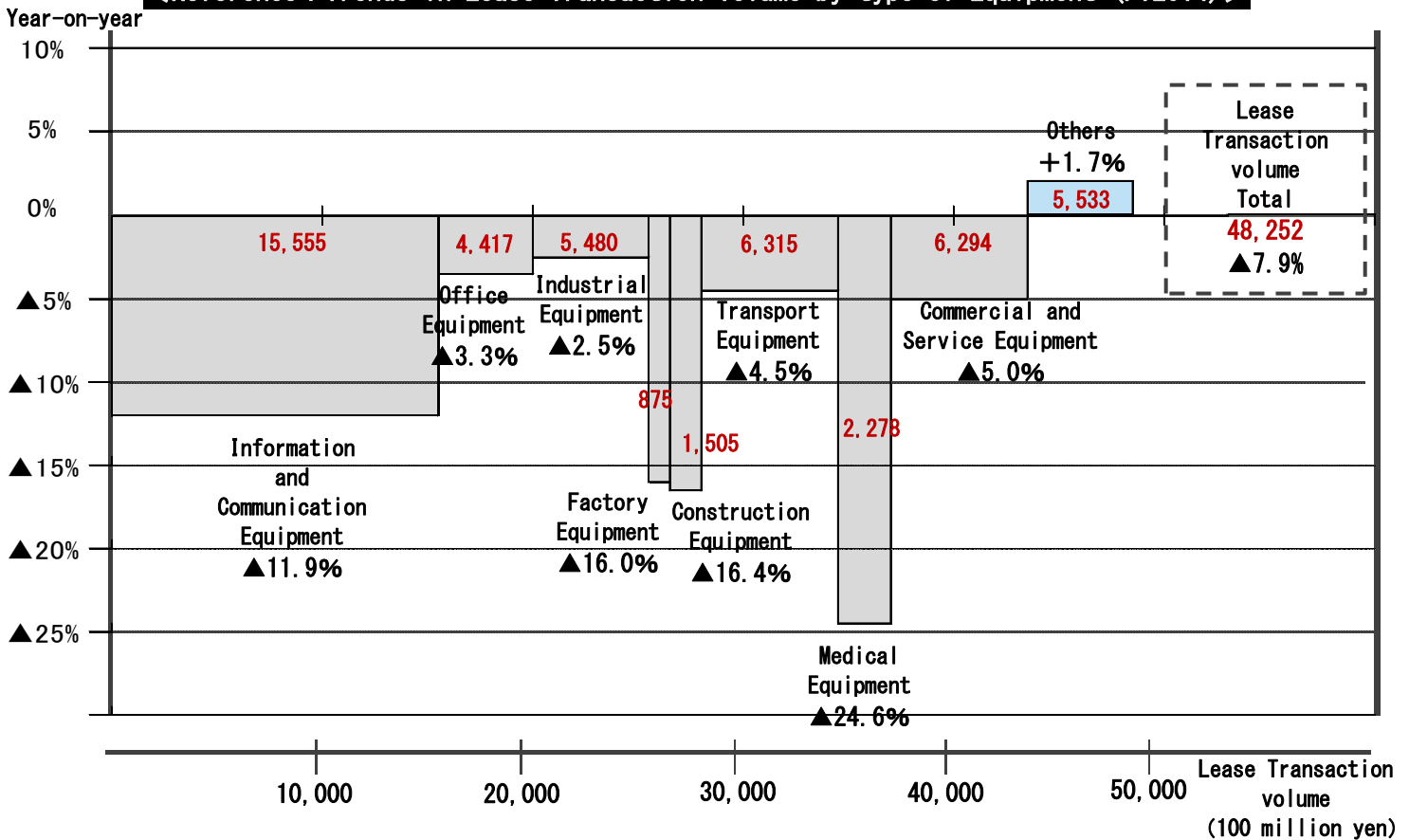
	FY 2012		FY 2013		FY 2014		FY 2015		Yearly Change				
	Leasing Volume	Component Ratio(%)	Leasing Volume	Component Ratio (%)	Leasing Volume	Component Ratio (%)	Leasing Volume	Component Ratio (%)	12/11	13/12	14/13	15/14	
1	Information and Communication Equipment	16,316	33.5	17,662	33.7	15,555	32.2	15,940	31.6	99.7	108.2	88.1	102.5
	Computer Hardware	8,147	16.7	9,407	18.0	7,980	16.5	8,107	16.1	100.8	115.5	84.8	101.6
	Computer Software	4,296	8.8	4,492	8.6	3,687	7.6	3,808	7.6	103.9	104.6	82.1	103.3
	Telecommunication Equipment	3,874	7.9	3,764	7.2	3,888	8.1	4,025	8.0	93.4	97.2	103.3	103.5
2	Office Equipment	4,473	9.2	4,568	8.7	4,417	9.2	4,300	8.5	105.9	102.1	96.7	97.3
3	Industrial Equipment	5,007	10.3	5,623	10.7	5,480	11.4	6,158	12.2	104.0	112.3	97.5	112.4
4	Factory Equipment	1,089	2.2	1,042	2.0	875	1.8	1,131	2.2	94.7	95.7	84.0	129.2
5	Construction Equipment	1,594	3.3	1,800	3.4	1,505	3.1	1,373	2.7	125.3	112.9	83.6	91.2
6	Transport Equipment	6,218	12.8	6,610	12.6	6,315	13.1	6,103	12.1	119.8	106.3	95.5	96.6
	Automobile	5,150	10.6	5,466	10.4	5,276	10.9	5,463	10.8	117.8	106.1	96.5	103.5
	Vessel	101	0.2	35	0.1	16	0.0	20	0.0	324.3	34.4	44.7	127.0
7	Medical Equipment	2,728	5.6	3,022	5.8	2,278	4.7	2,485	4.9	104.8	110.8	75.4	109.1
8	Commercial and Service Equipment	6,504	13.3	6,624	12.6	6,294	13.0	6,123	12.2	105.2	101.8	95.0	97.3
	Commercial Equipment	4,055	8.3	4,293	8.2	4,371	9.1	4,127	8.2	105.1	105.9	101.8	94.4
9	Others	4,824	9.9	5,439	10.4	5,533	11.5	6,781	13.5	114.9	112.8	101.7	122.5
	Physical and Chemical Equipment	596	1.2	575	1.1	490	1.0	551	1.1	104.2	96.4	85.3	112.4
Total		48,754	100.0	52,390	100.0	48,252	100.0	50,393	100.0	106.0	107.5	92.1	104.4
Corporations researched		229		223		221		219					

Trends in Lease Transaction Volume by type of Equipment (FY2015)

*The numbers in the graph represents (red) the lease transaction volume (100 million yen) .



<Reference : Trends in Lease Transaction Volume by type of Equipment (FY2014)>



Trends in Lease Transaction Volume by Size of Lessee

(Unit: in 100 million yen)

		FY 2012		FY 2013		FY 2014		FY 2015		Yearly Change			
		Leasing Volume	Component Ratio(%)	Leasing Volume	Component Ratio (%)	Leasing Volume	Component Ratio (%)	Leasing Volume	Component Ratio (%)	12/11	13/12	14/13	15/14
1	Large Companies	21,921	45.0	21,366	40.8	19,796	41.0	19,055	37.8	110.0	97.5	92.6	96.3
	Listed companies	10,852	22.3	9,545	18.2	8,418	17.4	8,079	16.0	105.7	88.0	88.2	96.0
2	Small and Medium Sized Companies	22,841	46.8	26,448	50.5	23,628	49.0	26,035	51.7	102.4	115.8	89.3	110.2
3	Public Sector and Others	3,993	8.2	4,575	8.7	4,829	10.0	5,303	10.5	106.3	114.6	105.6	109.8
Total		48,754	100.0	52,390	100.0	48,252	100.0	50,393	100.0	106.0	107.5	92.1	104.4

Trends in Lease Transaction Volume by Lessee's Business Type

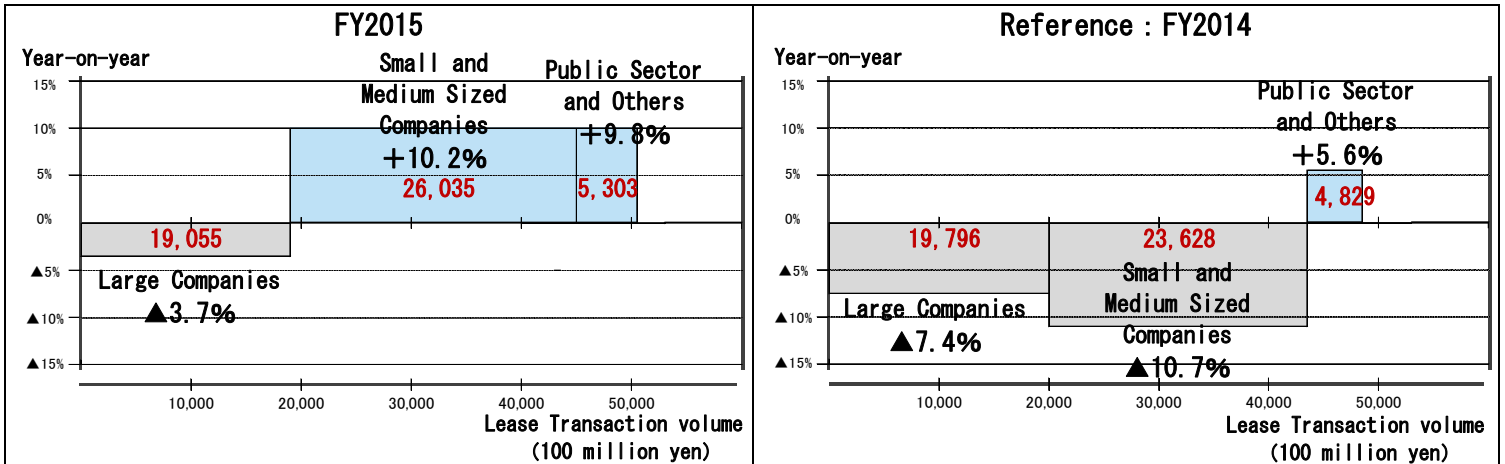
(Unit: in 100 million yen)

		FY 2012		FY 2013		FY 2014		FY 2015		Yearly Change			
		Leasing Volume	Component Ratio(%)	Leasing Volume	Component Ratio (%)	Leasing Volume	Component Ratio (%)	Leasing Volume	Component Ratio (%)	12/11	13/12	14/13	15/14
1	Agriculture, Forestry, Fisheries, and Mining and quarrying of stone and gravel	313	0.6	707	1.3	529	1.1	760	1.5	113.7	225.7	74.8	143.8
2	Construction	2,229	4.6	2,728	5.2	2,601	5.4	2,729	5.4	111.3	122.4	95.3	105.0
3	Manufacturing	9,311	19.1	9,664	18.4	8,810	18.3	9,819	19.5	99.6	103.8	91.2	111.5
	Manufacture of Food	1,668	3.4	1,679	3.2	1,428	3.0	1,502	3.0	117.1	100.7	85.0	105.2
	Textile mill, Lumber and wood, and Pulp Products	801	1.6	845	1.6	698	1.4	725	1.4	99.0	105.5	82.6	103.8
	Chemical and allied, Petroleum and coal, Plastic Products	980	2.0	914	1.7	933	1.9	884	1.8	104.3	93.3	102.1	94.8
	Iron and Steel, Non-ferrous Metal, and Fabricated Metal Products	1,056	2.2	1,106	2.1	1,081	2.2	1,139	2.3	94.2	104.8	97.7	105.4
	Production, Electrical, Information and Communication, Transportation Machinery	3,424	7.0	3,534	6.7	3,436	7.1	4,351	8.6	90.8	103.2	97.2	126.6
	Others	1,382	2.8	1,585	3.0	1,235	2.6	1,218	2.4	108.1	114.6	77.9	98.6
4	Non-manufacturing	32,987	67.7	35,272	67.3	31,734	65.8	32,632	64.8	106.9	106.9	90.0	102.8
	Electricity, Gas, Heat supply and Water	589	1.2	770	1.5	584	1.2	806	1.6	189.9	130.7	75.8	138.1
	Information and Communications	2,578	5.3	2,279	4.4	2,528	5.2	2,567	5.1	91.3	88.4	110.9	101.5
	Transport and Postal activities	3,032	6.2	3,152	6.0	2,784	5.8	2,992	5.9	110.5	103.9	88.3	107.5
	Wholesale and Retail trade	8,877	18.2	10,199	19.5	9,170	19.0	8,736	17.3	105.4	114.9	89.9	95.3
	Finance and Insurance	1,341	2.7	1,361	2.6	1,174	2.4	1,247	2.5	119.9	101.5	86.2	106.2
	Real estate, Goods rental, and Leasing	3,532	7.2	3,308	6.3	3,587	7.4	3,739	7.4	138.3	93.7	108.4	104.3
	Accommodations, Eating and drinking services	1,079	2.2	1,123	2.1	968	2.0	1,158	2.3	104.7	104.1	86.2	119.6
	Medical, Health care and Welfare	3,477	7.1	4,001	7.6	3,249	6.7	3,779	7.5	102.6	115.1	81.2	116.3
	Services, N.E.C.	8,483	17.4	9,078	17.3	7,692	15.9	7,609	15.1	100.1	107.0	84.7	98.9
5	Government, Except elsewhere classified	3,914	8.0	4,019	7.7	4,579	9.5	4,452	8.8	111.5	102.7	114.0	97.2
Total		48,754	100.0	52,390	100.0	48,252	100.0	50,393	100.0	106.0	107.5	92.1	104.4

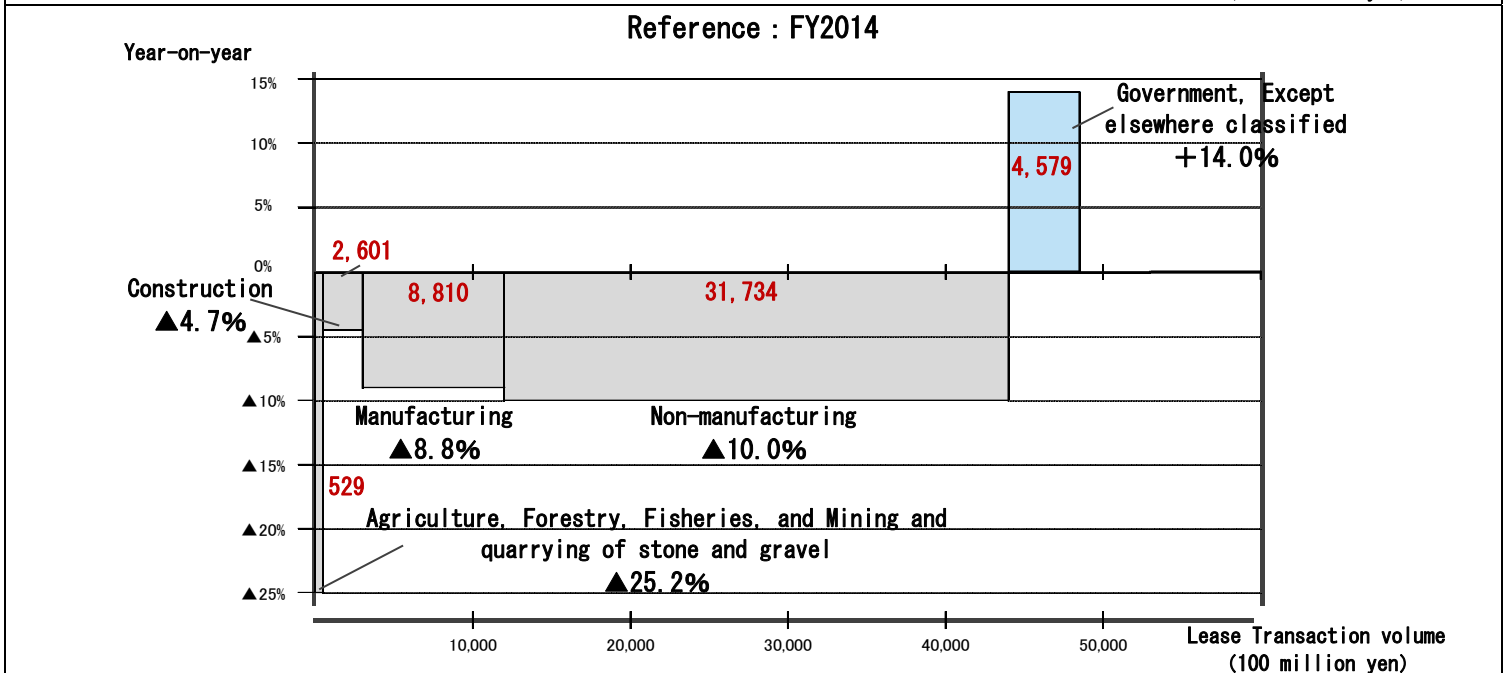
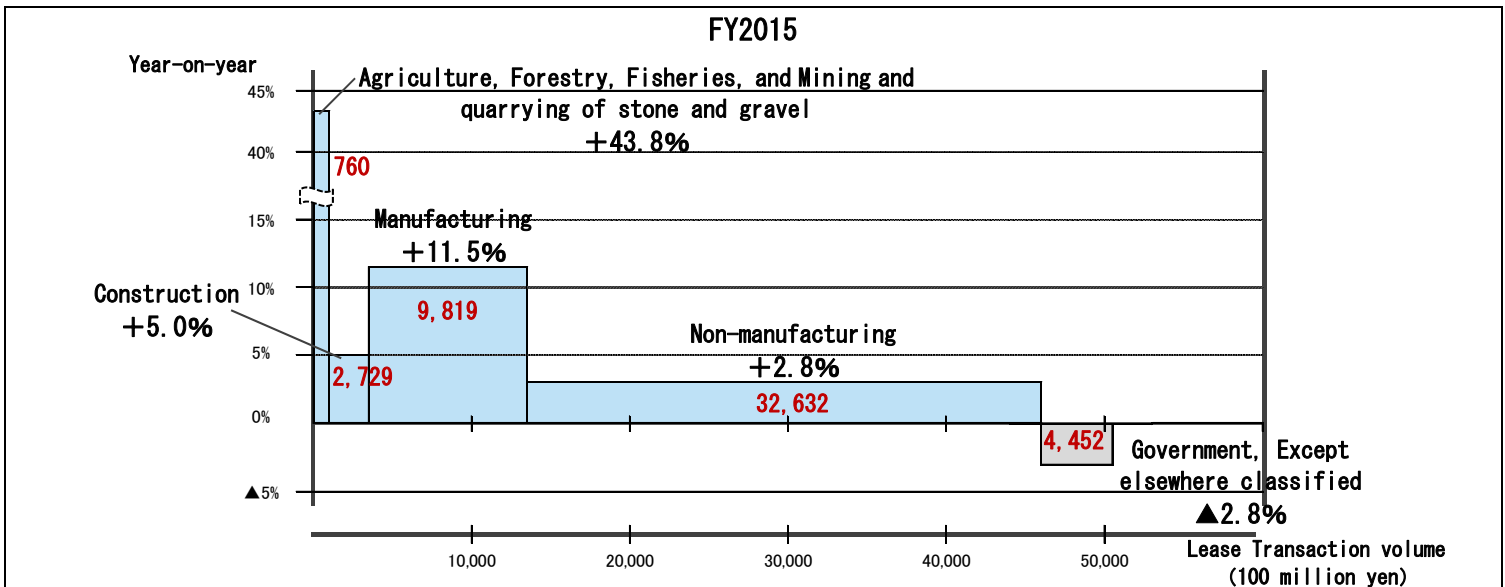
Trends in Lease Transaction Volume by Size of Lessee and Lessee's Business Type

*The numbers in the graph represents (red) the lease transaction volume (100 million yen) .

<Trends in Lease Transaction Volume by Size of Lessee>

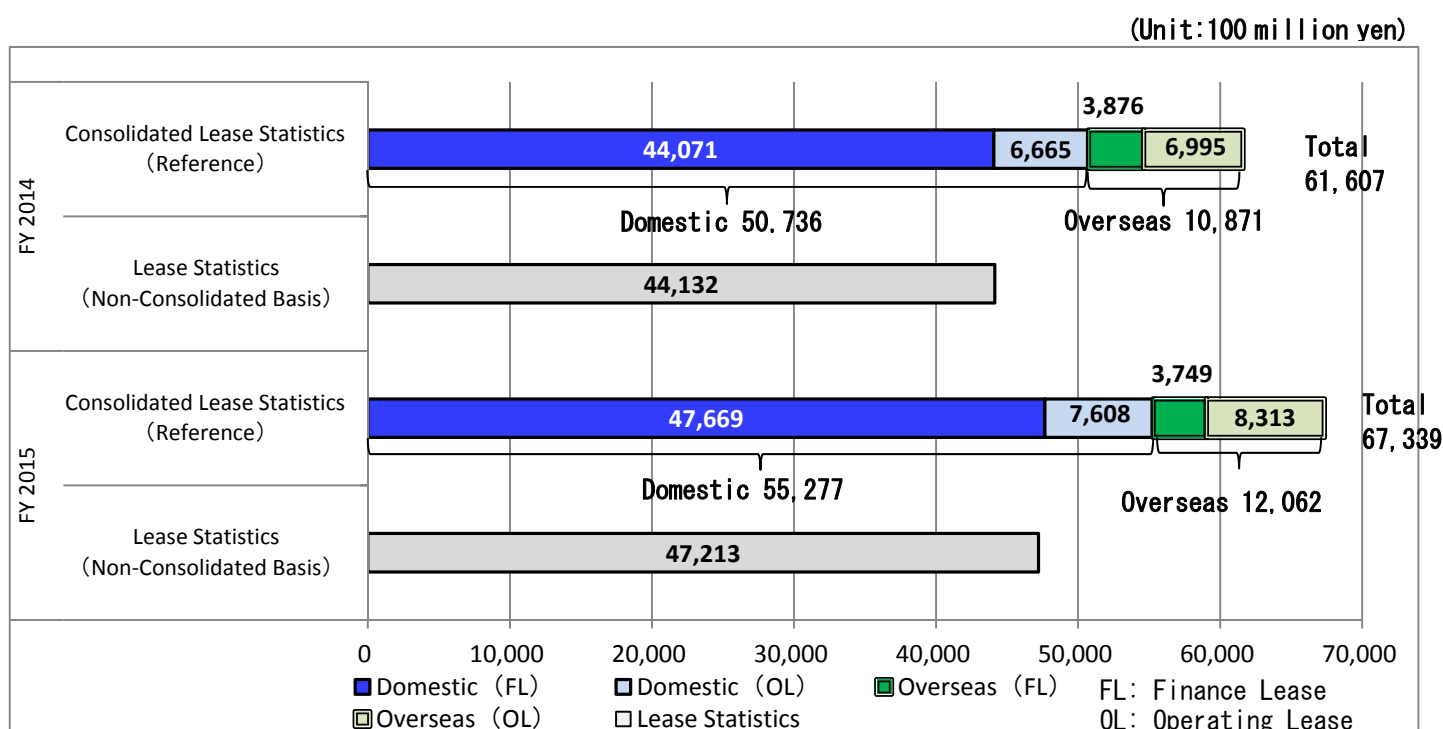


<Trends in Lease Transaction Volume by Lessee's Business Type>



(Reference) Consolidated Lease Statistics Survey Results (FY2015)

- ◆ A statistical survey was taken with regard to the transaction status of finance leases and operating leases in Japan and overseas on a consolidated basis including subsidiaries, the results of which are as shown (Based on leasing capital investment amounts [For reference]).



【FY2015 Leasing capital investment statistics (Consolidated basis)】

		Leasing capital investment (100 million yen)	Domestic and overseas composition ratio (%)	Grand total composition ratio (%)	Year-on-year Change (%)	(Reference) The previous year's total (100 million yen)
Domestic	Finance Lease	47,669	86.2	70.8	108.2	44,071
	Operating Lease	7,608	13.8	11.3	114.1	6,665
	Total	55,277	100.0	82.1	109.0	50,736
Overseas	Finance Lease	3,749	31.1	5.6	96.7	3,876
	Operating Lease	8,313	68.9	12.3	118.8	6,995
	Total	12,062	100.0	17.9	111.0	10,871
Grand Total		67,339	-	100.0	109.3	61,607

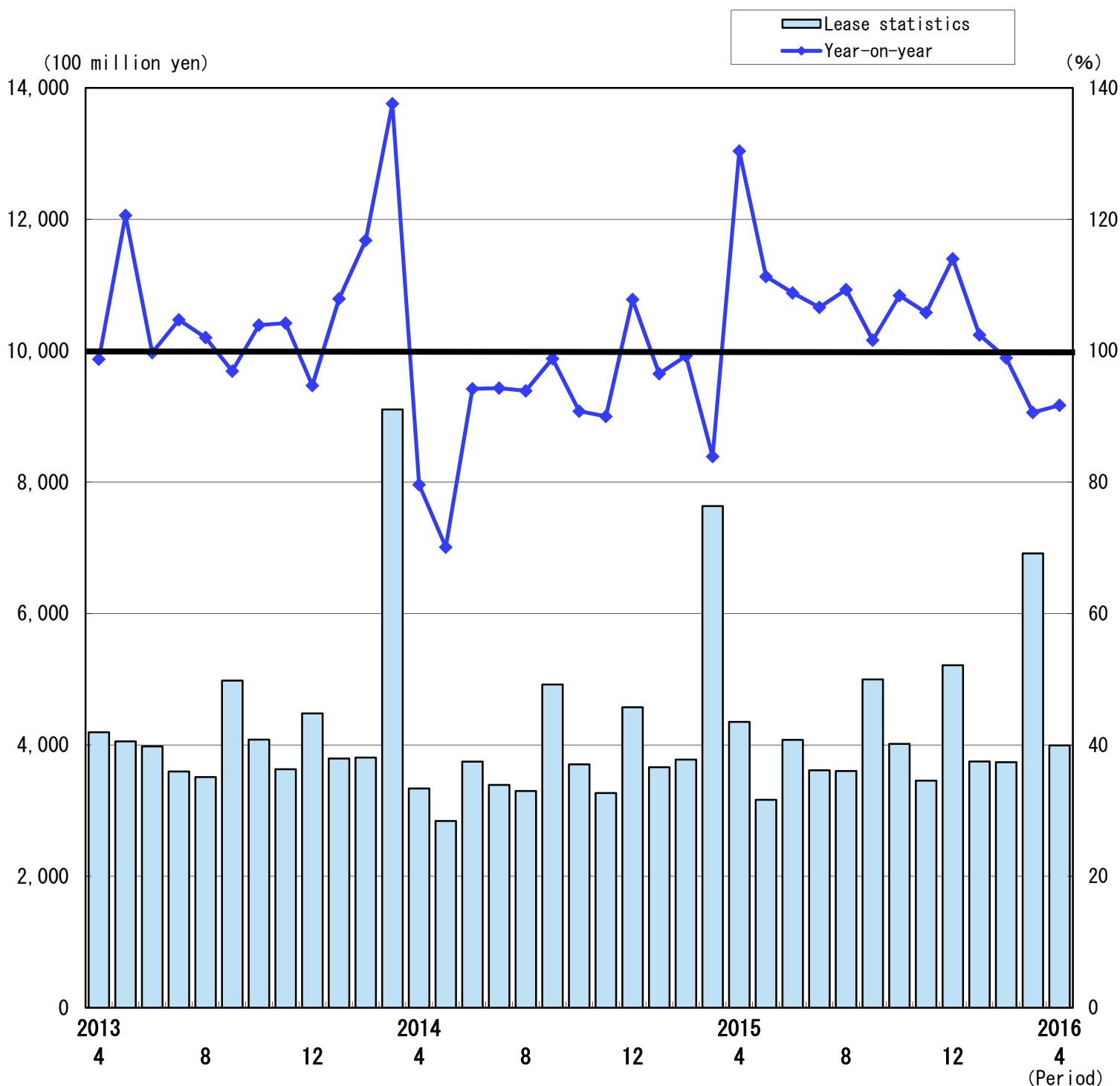
- ※1 Companies subject to the survey were the 27 companies to which the Association's directors and auditors belong (of which 22 companies were included in the statistics).
- ※2 Calculated by adding the survey results, i.e. consolidated lease statistics (after adjustment for duplication) to the non-consolidated lease statistics.
- ※3 Finance leases are lease transactions which meet the two requirements of (1) Cancellation during the lease term is prohibited (Prohibition of early termination) and (2) Nearly the entire amount (more than 90%) of the price of the property and ancillary costs may be recovered through lease payments.
- ※4 Operating leases are lease transactions other than finance leases.

Lease Statistics (Apr. 2016)

(Overview)

- The lease transaction volume in April 2016 is 399.2 billion yen, decreased by 8.3%, and Continuously decreased 3 months.
- Medical Equipment (12.6% up), Commercial and Service Equipment (4.1% up) increased.
- Information and Communication Equipment (4.4% down), Office Equipment (4.6% down), Industrial Equipment (7.0% down), Factory Equipment (21.4% down), Construction Equipment (7.8% down), Transport Equipment (5.8% down) decreased.

Changes in Lease Monthly Transaction Volume (2013.4–2016.4)



Leasing Volume by Type of Equipment (Apr. 2016)

		Leasing cases	Component Ratio (%)	Year-on-year Change (%)	Leasing Volume (in million yen)	Component Ratio (%)	Year-on-year Change (%)
1	Information and Communication Equipment	62,732	38.7	93.9	134,368.3	33.7	95.6
	Computer Hardware	(42,536)	(26.2)	(93.7)	(73,085.8)	(18.3)	(99.0)
	Computer Software	(6,275)	(3.9)	(90.7)	(31,597.4)	(7.9)	(83.2)
	Telecommunication Equipment	(13,921)	(8.6)	(96.0)	(29,685.1)	(7.4)	(103.4)
2	Office Equipment	31,728	19.6	96.0	38,878.6	9.7	95.4
3	Industrial Equipment	15,693	9.7	291.4	35,841.4	9.0	93.0
4	Factory Equipment	357	0.2	78.5	5,357.6	1.3	78.6
5	Construction Equipment	685	0.4	79.8	8,189.2	2.1	92.2
6	Transport Equipment	16,209	10.0	92.9	47,628.5	11.9	94.2
	Automobile	(14,655)	(9.0)	(93.1)	(42,868.6)	(10.7)	(93.6)
	Vessel	(17)	(0.0)	(283.3)	(424.8)	(0.1)	(160.3)
7	Medical Equipment	5,644	3.5	100.7	28,371.9	7.1	112.6
8	Commercial and Service Equipment	20,032	12.3	89.6	56,297.9	14.1	104.1
	Commercial Equipment	(15,392)	(9.5)	(87.1)	(33,337.1)	(8.4)	(94.8)
9	Others	9,125	5.6	92.7	44,250.4	11.1	63.5
	Physical and Chemical Equipment	(1,402)	(0.9)	(102.3)	(5,597.7)	(1.4)	(111.8)
Total		162,205	100.0	100.2	399,183.8	100.0	91.7

【Corporations researched: 215】

Changes in Lease Transaction Volume

Unit: in 100 Million Yen, Yearly Changes: Parenthesized

	Total	Information and Communication Equipment				Office Equipment	Industry Equipment	Factory Equipment	Construction Equipment	Transport Equipment			Medical Equipment	Commercial and Service Equipment		Others	Physical and Chemical Equipment	
		Computer Hardware	Computer Software	Telecommunication Equipment	Automobile					Vessel	Commercial Equipment							
Calendar Year	2013	49,657 (▲ 2.6)	15,923 (▲ 2.0)	8,287 (▲ 1.2)	4,102 (▲ 1.8)	3,533 (▲ 8.9)	4,447 (▲ 1.2)	5,620 (▲ 12.9)	948 (▲ 17.4)	1,710 (▲ 15.8)	6,562 (▲ 6.3)	5,359 (▲ 1.5)	28 (▲ 58.2)	2,726 (▲ 1.5)	6,348 (▲ 2.3)	4,054 (▲ 1.6)	5,373 (▲ 16.4)	563 (▲ 5.8)
	2014	49,786 (▲ 0.3)	16,466 (▲ 3.4)	8,820 (▲ 6.4)	4,125 (▲ 0.6)	3,520 (▲ 0.4)	4,503 (▲ 1.3)	4,953 (▲ 11.9)	981 (▲ 3.5)	1,560 (▲ 8.8)	6,429 (▲ 2.0)	5,389 (▲ 0.6)	21 (▲ 24.7)	2,756 (▲ 1.1)	6,438 (▲ 1.4)	4,231 (▲ 4.4)	5,700 (▲ 6.1)	535 (▲ 8.2)
	2015	51,563 (▲ 3.6)	15,945 (▲ 3.2)	8,180 (▲ 7.3)	3,800 (▲ 7.9)	3,965 (▲ 12.6)	4,404 (▲ 2.2)	6,646 (▲ 34.2)	1,156 (▲ 17.8)	1,418 (▲ 9.1)	6,521 (▲ 1.4)	5,787 (▲ 7.4)	17 (▲ 18.9)	2,489 (▲ 9.7)	6,257 (▲ 2.8)	4,246 (▲ 0.4)	6,727 (▲ 18.0)	539 (▲ 0.7)
Fiscal Year (Final Figures)	2013	52,390 (▲ 7.5)	17,682 (▲ 8.2)	9,407 (▲ 15.5)	4,492 (▲ 4.6)	3,764 (▲ 2.8)	4,568 (▲ 2.1)	5,623 (▲ 12.3)	1,042 (▲ 4.3)	1,800 (▲ 12.9)	6,610 (▲ 6.3)	5,466 (▲ 6.1)	35 (▲ 65.6)	3,022 (▲ 10.8)	6,624 (▲ 1.8)	4,293 (▲ 5.9)	5,439 (▲ 12.8)	575 (▲ 3.6)
	2014	48,252 (▲ 7.9)	15,555 (▲ 11.9)	7,980 (▲ 15.2)	3,687 (▲ 17.9)	3,888 (▲ 3.3)	4,417 (▲ 3.3)	5,480 (▲ 2.5)	875 (▲ 16.0)	1,505 (▲ 16.4)	6,315 (▲ 4.5)	5,276 (▲ 3.5)	16 (▲ 55.3)	2,278 (▲ 24.6)	6,294 (▲ 5.0)	4,371 (▲ 1.8)	5,533 (▲ 1.7)	490 (▲ 14.7)
	2015	50,393 (▲ 4.4)	15,940 (▲ 2.5)	8,107 (▲ 1.6)	3,808 (▲ 3.3)	4,025 (▲ 3.5)	4,300 (▲ 2.7)	6,158 (▲ 12.4)	1,131 (▲ 29.2)	1,373 (▲ 8.8)	6,103 (▲ 3.4)	5,463 (▲ 3.5)	20 (▲ 27.0)	2,485 (▲ 9.1)	6,123 (▲ 2.7)	4,127 (▲ 5.6)	6,781 (▲ 22.5)	551 (▲ 12.4)
Half Year	'14 4-9	21,533 (▲ 11.4)	6,703 (▲ 11.0)	3,472 (▲ 8.1)	1,562 (▲ 20.0)	1,669 (▲ 7.3)	2,171 (▲ 4.1)	2,111 (▲ 33.0)	382 (▲ 11.2)	602 (▲ 19.7)	2,944 (▲ 3.7)	2,544 (▲ 2.3)	9 (▲ 44.1)	996 (▲ 27.0)	3,112 (▲ 2.7)	2,093 (▲ 0.7)	2,513 (▲ 2.2)	218 (▲ 12.3)
	10-3	26,618 (▲ 7.1)	8,694 (▲ 12.3)	4,436 (▲ 20.0)	2,177 (▲ 15.9)	2,081 (▲ 17.1)	2,234 (▲ 5.0)	3,336 (▲ 21.6)	497 (▲ 17.7)	821 (▲ 24.0)	3,355 (▲ 6.8)	2,822 (▲ 1.9)	6 (▲ 61.6)	1,264 (▲ 30.6)	3,150 (▲ 7.2)	2,146 (▲ 1.1)	3,268 (▲ 3.5)	271 (▲ 17.2)
	'15 4-9	23,807 (▲ 10.6)	7,345 (▲ 9.6)	3,867 (▲ 11.4)	1,626 (▲ 4.1)	1,852 (▲ 11.0)	2,157 (▲ 0.6)	2,828 (▲ 34.0)	486 (▲ 27.0)	558 (▲ 7.3)	3,139 (▲ 6.6)	2,849 (▲ 12.0)	9 (▲ 1.6)	1,246 (▲ 25.1)	3,211 (▲ 3.2)	2,160 (▲ 3.2)	2,837 (▲ 12.9)	264 (▲ 21.0)
10-3	27,084 (▲ 1.8)	8,526 (▲ 1.9)	4,248 (▲ 4.2)	2,184 (▲ 0.3)	2,095 (▲ 0.6)	2,141 (▲ 4.1)	3,351 (▲ 0.5)	685 (▲ 37.9)	828 (▲ 0.8)	3,315 (▲ 1.2)	2,970 (▲ 5.2)	10 (▲ 60.6)	1,241 (▲ 1.8)	2,928 (▲ 7.0)	1,990 (▲ 7.3)	4,069 (▲ 24.5)	279 (▲ 3.0)	
Quarter Year	'14 4-6	9,925 (▲ 18.8)	3,095 (▲ 17.7)	1,643 (▲ 8.4)	688 (▲ 27.9)	764 (▲ 24.7)	1,005 (▲ 14.1)	786 (▲ 55.0)	147 (▲ 18.2)	262 (▲ 23.5)	1,350 (▲ 7.5)	1,175 (▲ 6.8)	5 (▲ 36.3)	419 (▲ 41.9)	1,443 (▲ 5.3)	1,005 (▲ 0.2)	1,416 (▲ 7.5)	101 (▲ 17.5)
	7-9	11,608 (▲ 4.0)	3,608 (▲ 4.3)	1,829 (▲ 7.8)	874 (▲ 12.4)	905 (▲ 15.1)	1,166 (▲ 6.6)	1,324 (▲ 5.6)	235 (▲ 6.3)	339 (▲ 16.5)	1,593 (▲ 0.2)	1,368 (▲ 2.0)	5 (▲ 50.0)	576 (▲ 10.2)	1,668 (▲ 0.3)	1,088 (▲ 1.0)	1,097 (▲ 12.4)	117 (▲ 7.2)
	10-12	11,546 (▲ 3.4)	3,581 (▲ 4.0)	1,933 (▲ 9.2)	812 (▲ 3.1)	835 (▲ 9.7)	1,023 (▲ 1.8)	1,250 (▲ 8.5)	221 (▲ 2.0)	435 (▲ 21.8)	1,553 (▲ 6.8)	1,299 (▲ 2.4)	2 (▲ 70.0)	589 (▲ 9.3)	1,572 (▲ 4.2)	1,041 (▲ 1.4)	1,323 (▲ 2.3)	132 (▲ 7.2)
1-3	15,072 (▲ 9.8)	5,114 (▲ 17.3)	2,503 (▲ 26.7)	1,365 (▲ 22.1)	1,246 (▲ 22.6)	1,211 (▲ 7.5)	2,086 (▲ 31.0)	276 (▲ 27.1)	386 (▲ 26.3)	1,803 (▲ 6.7)	1,523 (▲ 1.5)	4 (▲ 56.0)	675 (▲ 42.4)	1,577 (▲ 10.1)	1,105 (▲ 0.8)	1,945 (▲ 4.3)	139 (▲ 24.8)	
'15 4-6	11,593 (▲ 16.8)	3,666 (▲ 18.4)	1,917 (▲ 16.7)	790 (▲ 14.8)	958 (▲ 25.4)	1,107 (▲ 10.2)	1,271 (▲ 61.7)	204 (▲ 38.9)	243 (▲ 7.3)	1,527 (▲ 13.1)	1,376 (▲ 17.1)	5 (▲ 18.1)	654 (▲ 56.0)	1,575 (▲ 9.1)	1,097 (▲ 9.1)	1,345 (▲ 5.0)	133 (▲ 30.9)	
7-9	12,214 (▲ 5.2)	3,679 (▲ 2.0)	1,950 (▲ 6.6)	836 (▲ 4.4)	894 (▲ 1.2)	1,050 (▲ 10.0)	1,557 (▲ 17.6)	281 (▲ 19.6)	315 (▲ 7.3)	1,612 (▲ 1.2)	1,473 (▲ 7.6)	4 (▲ 14.4)	591 (▲ 2.6)	1,636 (▲ 1.9)	1,083 (▲ 2.2)	1,493 (▲ 36.1)	131 (▲ 12.5)	
10-12	12,685 (▲ 9.9)	3,486 (▲ 2.6)	1,810 (▲ 6.4)	809 (▲ 0.3)	867 (▲ 3.8)	1,036 (▲ 1.3)	1,732 (▲ 38.6)	395 (▲ 78.5)	475 (▲ 9.2)	1,579 (▲ 1.7)	1,415 (▲ 8.9)	3 (▲ 74.3)	568 (▲ 3.5)	1,469 (▲ 6.6)	980 (▲ 5.8)	1,945 (▲ 47.0)	135 (▲ 2.9)	
1-3	14,399 (▲ 4.5)	5,040 (▲ 1.4)	2,438 (▲ 2.6)	1,374 (▲ 0.7)	1,227 (▲ 1.5)	1,105 (▲ 8.7)	1,619 (▲ 22.4)	290 (▲ 5.3)	353 (▲ 8.6)	1,736 (▲ 3.7)	1,555 (▲ 2.1)	7 (▲ 54.4)	673 (▲ 0.3)	1,459 (▲ 7.5)	1,010 (▲ 8.6)	2,124 (▲ 9.2)	144 (▲ 3.2)	
Monthly	'15 4	4,351 (▲ 30.4)	1,406 (▲ 22.3)	739 (▲ 15.3)	380 (▲ 28.5)	287 (▲ 34.7)	408 (▲ 29.0)	386 (▲ 51.6)	68 (▲ 90.9)	89 (▲ 4.4)	506 (▲ 25.8)	458 (▲ 32.0)	3 (▲ 20.5)	252 (▲ 82.1)	541 (▲ 24.2)	352 (▲ 19.6)	700 (▲ 34.1)	50 (▲ 49.4)
	5	3,165 (▲ 11.3)	924 (▲ 10.4)	520 (▲ 19.1)	185 (▲ 0.3)	219 (▲ 2.0)	304 (▲ 2.0)	404 (▲ 72.7)	57 (▲ 27.9)	68 (▲ 19.0)	448 (▲ 0.3)	396 (▲ 7.9)	0 (▲ 303.2)	196 (▲ 56.8)	498 (▲ 9.9)	363 (▲ 13.7)	265 (▲ 16.3)	42 (▲ 54.6)
	6	4,077 (▲ 8.8)	1,336 (▲ 20.5)	659 (▲ 16.5)	225 (▲ 9.0)	452 (▲ 34.6)	395 (▲ 1.3)	482 (▲ 61.5)	79 (▲ 18.5)	86 (▲ 7.5)	573 (▲ 14.9)	523 (▲ 13.3)	2 (▲ 7.9)	207 (▲ 32.3)	536 (▲ 3.4)	383 (▲ 2.4)	383 (▲ 34.0)	41 (▲ 0.1)
7	3,614 (▲ 6.6)	1,058 (▲ 10.4)	576 (▲ 9.3)	245 (▲ 20.4)	238 (▲ 4.2)	361 (▲ 3.8)	403 (▲ 16.1)	68 (▲ 11.7)	86 (▲ 4.4)	563 (▲ 3.8)	522 (▲ 15.3)	1 (▲ 46.5)	182 (▲ 6.8)	529 (▲ 2.5)	353 (▲ 0.2)	364 (▲ 19.8)	38 (▲ 9.2)	
8	3,603 (▲ 9.3)	989 (▲ 0.6)	539 (▲ 11.5)	229 (▲ 22.4)	222 (▲ 2.3)	293 (▲ 9.3)	450 (▲ 24.8)	78 (▲ 10.3)	81 (▲ 21.5)	444 (▲ 8.3)	395 (▲ 6.3)	0 (▲ 57.4)	160 (▲ 7.3)	502 (▲ 3.1)	319 (▲ 4.4)	605 (▲ 64.7)	43 (▲ 13.4)	
9	4,996 (▲ 1.6)	1,632 (▲ 1.4)	836 (▲ 2.0)	362 (▲ 3.6)	434 (▲ 5.6)	395 (▲ 15.4)	704 (▲ 14.2)	135 (▲ 30.5)	147 (▲ 1.0)	605 (▲ 5.6)	555 (▲ 2.1)	2 (▲ 94.9)	249 (▲ 3.0)	606 (▲ 0.4)	391 (▲ 2.2)	523 (▲ 23.0)	51 (▲ 14.3)	
10	4,016 (▲ 8.4)	1,297 (▲ 3.7)	690 (▲ 2.5)	370 (▲ 17.4)	237 (▲ 4.1)	347 (▲ 4.2)	488 (▲ 30.1)	100 (▲ 38.1)	143 (▲ 1.6)	514 (▲ 5.9)	463 (▲ 7.0)	1 (▲ 59.3)	187 (▲ 2.4)	430 (▲ 13.7)	288 (▲ 10.8)	510 (▲ 52.9)	58 (▲ 7.4)	
11	3,456 (▲ 5.8)	916 (▲ 3.7)	509 (▲ 3.9)	185 (▲ 2.5)	222 (▲ 18.3)	324 (▲ 3.8)	351 (▲ 14.2)	108 (▲ 78.4)	156 (▲ 16.6)	505 (▲ 3.9)	453 (▲ 9.8)	2 (▲ 340.3)	181 (▲ 1.7)	435 (▲ 6.5)	304 (▲ 5.2)	480 (▲ 44.0)	36 (▲ 3.8)	
12	5,213 (▲ 14.0)	1,273 (▲ 7.6)	611 (▲ 16.9)	254 (▲ 17.2)	408 (▲ 21.5)	365 (▲ 4.7)	893 (▲ 57.4)	187 (▲ 111.4)	176 (▲ 13.0)	560 (▲ 3.4)	498 (▲ 10.0)	1 (▲ 7.1)	201 (▲ 12.2)	604 (▲ 0.8)	389 (▲ 2.3)	954 (▲ 45.5)	41 (▲ 3.4)	
'16 1	3,748 (▲ 2.4)	1,367 (▲ 3.9)	729 (▲ 6.4)	371 (▲ 14.4)	267 (▲ 26.5)	282 (▲ 19.0)	360 (▲ 2.7)	78 (▲ 18.9)	106 (▲ 2.2)	423 (▲ 10.9)	371 (▲ 6.9)	3 (▲ 85.3)	184 (▲ 4.4)	391 (▲ 15.0)	252 (▲ 22.9)	557 (▲ 69.9)	40 (▲ 5.7)	
2	3,736 (▲ 1.1)	1,138 (▲ 2.8)	604 (▲ 6.1)	325 (▲ 10.5)	209 (▲ 14.0)	307 (▲ 8.1)	581 (▲ 9.4)	84 (▲ 3.0)	110 (▲ 8.9)	524 (▲ 5.2)	483 (▲ 11.1)	1 (▲ 17.8)	164 (▲ 5.0)	392 (▲ 2.5)	269 (▲ 3.3)	435 (▲ 8.8)	41 (▲ 2.2)	
3	6,915 (▲ 9.4)	2,534 (▲ 1.9)	1,105 (▲ 4.3)	678 (▲ 6.4)	750 (▲ 5.1)	516 (▲ 2.4)	678 (▲ 36.9)	128 (▲ 0.2)	137 (▲ 22.5)	788 (▲ 9.2)	700 (▲ 5.4)	3 (▲ 49.9)	325 (▲ 5.2)	676 (▲ 5.5)	488 (▲ 2.2)	1,132 (▲ 7.0)	63 (▲ 2.3)	
4	3,992 (▲ 8.3)	1,344 (▲ 4.4)	731 (▲ 1.0)	316 (▲ 16.8)	297 (▲ 3.4)	389 (▲ 4.6)	358 (▲ 7.0)	54 (▲ 21.4)	82 (▲ 7.8)	476 (▲ 5.8)	429 (▲ 6.4)	4 (▲ 60.3)	284 (▲ 12.6)	563 (▲ 4.1)	333 (▲ 5.2)	443 (▲ 36.5)	56 (▲ 11.8)	

Rounding off to hundreds of millions yen, the figure of the total column may not correspond to the inclusive sum of each item in the table. Also, the figure of information-related device may not correspond to the inclusive sum of its breakdown.