

## Lease Statistics (The First Half of FY2024)

The lease transaction volume in the first half of FY2024 (from April 2024 to September 2024) is 2,350.8 billion yen, increased by 10.7% compared with the same period of the previous year. On the half year basis, it increased continuously from the second half of FY2022.

With regard to the type of equipment on a half year basis, Information and Communication Equipment (14.0% up), Transport Equipment (20.3% up), and Commercial and Service Equipment (15.3% up) have respectively showed double-digit increase. In addition, Office Equipment (5.4% up), and Construction Equipment (5.7% up) have showed positive growth. On the other hand, Industrial Equipment (17.1% down), Factory Equipment (14.0% down), and Medical Equipment (5.7% down) have respectively showed negative growth.

The lease transaction volume in September 2024 is 458.1 billion yen, decreased by 8.2%, compared with the same period of the previous year. The lease transaction volume has turned to negative growth for the first time for the 7 months. With regard to the type of equipment, Construction Equipment (13.4% up), Transport Equipment (18.2% up), and Commercial and Service Equipment (17.4% up) have respectively showed double-digit increase. On the other hand, Information and Communication Equipment (5.3% down), Office Equipment (17.6% down), Industrial Equipment (52.7% down), Factory Equipment (30.1% down), and Medical Equipment (11.5% down) have respectively showed negative growth.

### Changes in Leasing Transaction Volume (Monthly)

Year, Month	Leasing Cases	Yearly Change (%)	Leasing Volume (in million yen)	Yearly Change (%)
2023, 9	157,461	121.0	498,936.9	124.2
10	136,525	105.5	362,327.2	104.6
11	129,049	111.4	329,096.5	109.4
12	133,285	106.5	411,636.8	104.8
2024, 1	139,951	110.5	382,004.9	115.8
2	120,406	101.6	351,865.7	99.8
3	167,401	102.2	611,302.0	103.1
4	171,230	108.5	436,713.3	122.0
5	128,797	104.9	328,370.7	115.3
6	133,776	96.4	396,282.3	108.2
7	144,745	108.2	385,049.1	123.2
8	129,498	99.9	346,276.1	114.5
9	141,282	89.7	458,133.0	91.8
2024,4 - 2024,9	849,328	101.1	2,350,824.5	110.7

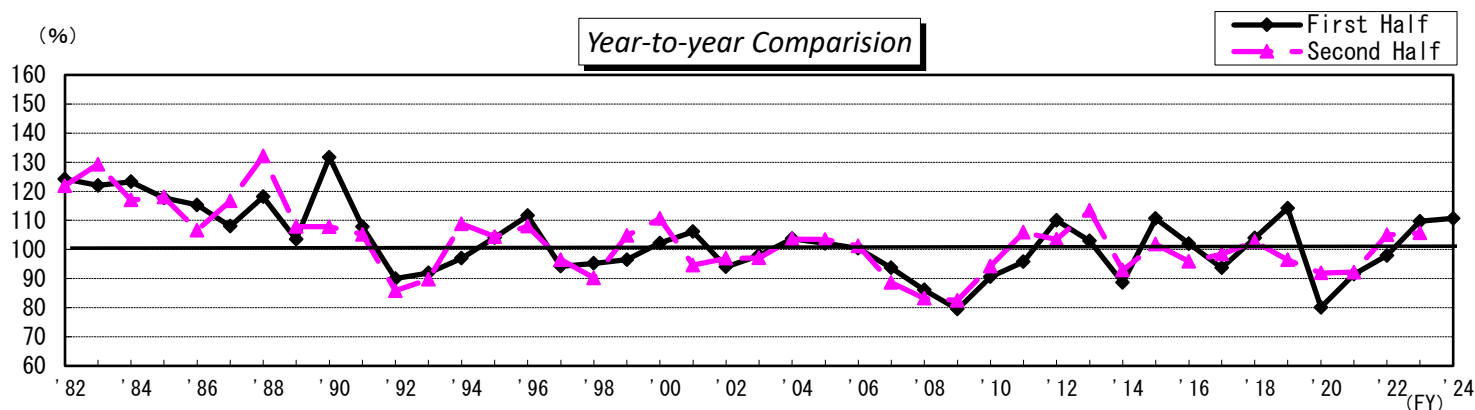
★Corporations researched: 204 (as of September 2024)

# Change in Total of Lease Transaction Volume (Separated by Half)

(in 100 million yen %)

Fiscal Year	First Half (April–September)			Second Half (October–March)		
	Leasing Volume	Yearly Change	Half-yearly Change	Leasing Volume	Yearly Change	Half-yearly Change
1972	1,489	—	—	2,079	—	139.6
1973	2,649	177.9	127.4	2,608	125.4	98.4
1974	2,713	102.4	104.0	2,670	102.4	98.4
1975	2,844	104.8	106.5	2,831	106.0	99.5
1976	(regular member) 3,131	110.1	110.6	3,612	127.6	115.4
	(total) 3,629	—	—	4,280	—	117.9
1977	4,200	115.7	98.1	4,415	103.1	105.1
1978	5,227	124.5	118.4	5,381	121.9	102.9
1979	6,863	131.3	127.5	7,484	139.1	109.0
1980	7,766	113.2	103.8	7,850	104.9	101.1
1981	9,458	121.8	120.5	9,996	127.3	105.7
1982	11,751	124.2	117.6	12,181	121.9	103.7
1983	14,333	122.0	117.7	15,755	129.3	109.9
1984	17,666	123.3	112.1	18,428	117.0	104.3
1985	20,800	117.7	112.9	21,736	118.0	104.5
1986	23,992	115.3	110.4	23,172	106.6	96.6
1987	25,901	108.0	111.8	27,033	116.7	104.4
1988	30,595	118.1	113.2	35,723	132.1	116.8
1989	31,659	103.5	88.6	38,553	107.9	121.8
1990	41,700	131.7	108.2	41,579	107.8	99.7
1991	44,960	107.8	108.1	43,745	105.2	97.3
1992	40,474	90.0	92.5	37,532	85.8	92.7
1993	37,185	91.9	99.1	33,684	89.7	90.6
1994	36,082	97.0	107.1	36,643	108.8	101.6
1995	37,554	104.1	102.5	38,249	104.4	101.9
1996	41,907	111.6	109.6	41,290	108.0	98.5
1997	39,474	94.2	95.6	39,860	96.5	101.0
1998	37,595	95.2	94.3	35,944	90.2	95.6
1999	36,298	96.5	101.0	37,661	104.8	103.8
2000	37,081	102.2	98.5	41,644	110.6	112.3
2001	39,356	106.1	94.5	39,405	94.6	100.1
2002	36,996	94.0	93.9	38,224	97.0	103.3
2003	36,252	98.0	94.8	37,112	97.1	102.4
2004	37,576	103.7	101.3	38,432	103.6	102.3
2005	38,380	102.1	99.9	39,752	103.4	103.6
2006	38,541	100.4	97.0	40,215	101.2	104.3
2007	36,119	93.7	89.8	35,627	88.6	98.6
2008	31,091	86.1	87.3	29,654	83.2	95.4
2009	24,712	79.5	83.3	24,461	82.5	99.0
2010	22,398	90.6	91.6	23,064	94.3	103.0
2011	21,463	95.8	93.1	24,423	105.9	113.8
2012	23,616	110.0	96.7	25,284	103.5	107.1
2013	24,310	102.9	96.1	28,661	113.4	117.9
2014	21,533	88.6	75.1	26,618	92.9	123.6
2015	23,807	110.6	89.4	27,084	101.8	113.8
2016	24,271	102.0	89.6	25,979	95.9	107.0
2017	22,735	93.7	87.5	25,565	98.4	112.4
2018	23,628	103.9	92.4	26,267	102.7	111.2
2019	26,983	114.2	102.7	26,000	99.0	96.4
2020	21,613	80.1	83.1	23,904	91.9	110.6
2021	19,767	91.5	82.7	22,044	92.2	111.5
2022	19,342	97.9	87.7	23,153	105.0	119.7
2023	21,227	109.7	91.7	24,482	105.7	115.3
2024	23,508	110.7	96.0			

Note: Leasing volume before FY 1976 does not include that of associated members.



## Leasing Volume by Type of Equipment (Sep. 2024)

		Leasing cases	Component Ratio (%)	Year-on-year Change (%)	Leasing Volume (in million yen)	Component Ratio (%)	Year-on-year Change (%)
1	Information and Communication Equipment	58,620	41.5	77.8	180,658.6	39.4	94.7
	Computer Hardware	( 40,713 )	( 28.8 )	( 74.1 )	( 103,260.2 )	( 22.5 )	( 98.2 )
	Computer Software	( 3,882 )	( 2.7 )	( 89.5 )	( 19,728.8 )	( 4.3 )	( 74.9 )
	Telecommunication Equipment	( 14,025 )	( 9.9 )	( 87.6 )	( 57,669.6 )	( 12.6 )	( 97.3 )
2	Office Equipment	22,776	16.1	89.2	32,425.5	7.1	82.4
3	Industrial Equipment	2,802	2.0	81.7	38,379.2	8.4	47.3
4	Factory Equipment	350	0.2	84.3	6,629.4	1.4	69.9
5	Construction Equipment	1,737	1.2	141.3	15,937.8	3.5	113.4
6	Transport Equipment	22,132	15.7	100.0	79,037.0	17.3	118.2
	Automobile	( 20,291 )	( 14.4 )	( 98.9 )	( 69,799.3 )	( 15.2 )	( 112.6 )
	Vessel	( 8 )	( 0.0 )	( 100.0 )	( 958.9 )	( 0.2 )	( 844.1 )
7	Medical Equipment	4,782	3.4	101.9	19,991.9	4.4	88.5
8	Commercial and Service Equipment	17,739	12.6	106.9	49,630.6	10.8	117.4
	Commercial Equipment	( 12,706 )	( 9.0 )	( 107.1 )	( 33,216.3 )	( 7.3 )	( 118.2 )
9	Others	10,344	7.3	127.5	35,443.0	7.7	109.2
	Physical and Chemical Equipment	( 1,302 )	( 0.9 )	( 91.9 )	( 6,301.9 )	( 1.4 )	( 97.5 )
Total		141,282	100.0	89.7	458,133.0	100.0	91.8

【Corporations researched: 204】

## Leasing Volume by Type of Equipment

### (Apr. 2024 - Sep. 2024.)

		Leasing cases	Component Ratio (%)	Yearly Change (%)	Leasing Volume (in million yen)	Component Ratio (%)	Yearly Change (%)
1	Information and Communication Equipment	382,537	45.0	94.7	871,534.1	37.1	114.0
	Computer Hardware	( 288,676 )	( 34.0 )	( 95.7 )	( 507,633.8 )	( 21.6 )	( 117.4 )
	Computer Software	( 22,123 )	( 2.6 )	( 87.4 )	( 125,427.1 )	( 5.3 )	( 108.0 )
	Telecommunication Equipment	( 71,738 )	( 8.4 )	( 93.1 )	( 238,473.2 )	( 10.1 )	( 110.6 )
2	Office Equipment	136,718	16.1	105.4	188,274.2	8.0	105.4
3	Industrial Equipment	15,313	1.8	90.8	170,958.4	7.3	82.9
4	Factory Equipment	1,653	0.2	89.0	30,766.8	1.3	86.0
5	Construction Equipment	6,513	0.8	115.2	67,277.6	2.9	105.7
6	Transport Equipment	116,539	13.7	104.2	408,031.2	17.4	120.3
	Automobile	( 105,447 )	( 12.4 )	( 102.3 )	( 354,880.6 )	( 15.1 )	( 115.0 )
	Vessel	( 66 )	( 0.0 )	( 94.3 )	( 3,671.3 )	( 0.2 )	( 202.4 )
7	Medical Equipment	26,420	3.1	100.0	109,565.6	4.7	94.3
8	Commercial and Service Equipment	100,931	11.9	102.4	290,437.9	12.4	115.3
	Commercial Equipment	( 72,566 )	( 8.5 )	( 100.0 )	( 198,312.0 )	( 8.4 )	( 115.0 )
9	Others	62,704	7.4	138.0	213,978.7	9.1	128.2
	Physical and Chemical Equipment	( 6,964 )	( 0.8 )	( 95.3 )	( 31,572.3 )	( 1.3 )	( 92.1 )
Total		849,328	100.0	101.1	2,350,824.5	100.0	110.7

## Changes in Lease Transaction Volume

Unit: in 100 Million Yen, Yearly Changes: Parenthesized

	Total	Information and Communication Equipment			Office Equipment	Industry Equipment	Factory Equipment	Construction Equipment	Transport Equipment			Medical Equipment	Commercial and Service Equipment		Others			
		Computer Hardware	Computer Software	Telecommunication Equipment					Automobile	Vessel	Commercial Equipment		Physical and Chemical Equipment					
Calendar Year	'2021	42,536 (▲ 10.1)	16,677 (▲ 7.8)	9,084 (▲ 6.1)	3,116 (▲ 9.7)	4,477 (▲ 9.9)	3,400 (▲ 6.2)	3,842 (▲ 16.4)	767 (▲ 28.8)	1,325 (▲ 5.0)	6,372 (▲ 2.1)	5,563 (▲ 3.2)	77 (18.2)	2,118 (1.5)	4,577 (▲ 8.0)	3,005 (▲ 8.4)	3,459 (▲ 30.2)	680 (▲ 4.9)
	'2022	41,872 (▲ 1.6)	15,658 (▲ 6.1)	8,398 (▲ 7.5)	2,766 (▲ 11.2)	4,494 (0.4)	3,349 (▲ 1.5)	4,085 (6.3)	742 (▲ 3.2)	1,312 (▲ 1.0)	6,123 (▲ 3.9)	5,285 (▲ 5.0)	80 (3.2)	2,163 (2.1)	4,733 (3.4)	3,214 (6.9)	3,707 (7.2)	722 (6.1)
	'2023	45,013 (7.5)	17,042 (8.8)	9,556 (13.8)	3,234 (16.9)	4,252 (▲ 5.4)	3,491 (4.2)	4,212 (3.1)	794 (7.1)	1,476 (12.5)	7,096 (15.9)	6,275 (18.7)	70 (▲ 11.6)	2,304 (6.5)	5,040 (6.5)	3,480 (8.3)	3,559 (▲ 4.0)	740 (2.5)
Fiscal Year (Final Figures)	'2021	42,186 (▲ 8.1)	16,602 (▲ 6.2)	8,496 (▲ 8.6)	3,163 (▲ 4.1)	4,943 (▲ 3.0)	3,249 (▲ 12.1)	3,786 (▲ 14.5)	762 (▲ 19.3)	1,431 (▲ 2.3)	6,430 (▲ 1.2)	5,573 (▲ 5.0)	74 (▲ 8.3)	2,010 (▲ 3.9)	4,528 (▲ 7.1)	3,168 (▲ 6.8)	3,389 (▲ 19.5)	626 (▲ 24.6)
	'2022	43,106 (2.2)	16,252 (▲ 2.1)	9,348 (10.0)	3,008 (▲ 4.9)	3,896 (▲ 21.2)	3,430 (5.6)	4,197 (10.8)	747 (▲ 1.9)	1,425 (▲ 0.4)	6,300 (▲ 2.0)	5,575 (0.0)	94 (▲ 28.2)	2,227 (10.8)	4,963 (9.6)	3,378 (6.6)	3,565 (5.2)	710 (13.4)
	'2023	46,299 (7.4)	17,312 (6.5)	10,582 (13.2)	2,912 (▲ 3.2)	3,818 (▲ 2.0)	3,588 (4.6)	4,279 (2.0)	803 (7.5)	1,527 (7.1)	7,424 (17.8)	6,546 (17.4)	96 (1.1)	2,387 (7.2)	5,211 (5.0)	3,526 (4.4)	3,770 (5.7)	733 (3.2)
Half Year	'22 10-3	23,153 (5.0)	9,138 (2.4)	4,874 (0.2)	1,883 (9.9)	2,380 (1.5)	1,676 (6.4)	2,462 (16.7)	402 (▲ 1.6)	756 (▲ 0.4)	3,309 (6.2)	2,882 (7.5)	48 (67.9)	1,156 (11.5)	2,415 (5.6)	1,687 (13.7)	1,838 (0.6)	410 (5.4)
	'23 4-9	21,227 (9.7)	7,642 (12.5)	4,324 (20.6)	1,162 (5.9)	2,156 (2.1)	1,787 (3.9)	2,062 (22.4)	358 (4.3)	637 (13.4)	3,391 (14.5)	3,087 (18.8)	18 (▲ 61.1)	1,162 (10.6)	2,520 (4.0)	1,724 (5.1)	1,668 (▲ 7.4)	343 (7.9)
	10-3	24,482 (5.7)	9,264 (1.4)	5,616 (15.2)	1,760 (▲ 6.5)	1,887 (▲ 20.7)	1,840 (9.8)	2,175 (▲ 11.7)	444 (10.3)	870 (15.1)	3,936 (18.9)	3,352 (16.3)	76 (57.1)	1,226 (6.1)	2,542 (5.3)	1,744 (3.4)	2,186 (18.9)	384 (▲ 6.2)
	'24 4-9	23,508 (10.7)	8,715 (14.0)	5,076 (17.4)	1,254 (8.0)	2,385 (10.6)	1,883 (5.4)	1,710 (▲ 17.1)	308 (▲ 14.0)	673 (5.7)	4,080 (20.3)	3,549 (15.0)	37 (102.4)	1,096 (▲ 5.7)	2,904 (15.3)	1,983 (15.0)	2,140 (28.2)	316 (▲ 7.9)
Quarter Year	'22 10-12	10,397 (4.9)	3,673 (▲ 1.7)	1,955 (▲ 2.7)	537 (▲ 7.9)	1,181 (3.3)	812 (7.3)	1,226 (31.3)	191 (▲ 5.2)	392 (▲ 2.1)	1,530 (3.0)	1,301 (0.4)	12 (58.2)	553 (15.8)	1,150 (2.1)	800 (12.7)	870 (9.7)	197 (8.4)
	'23 1-3	12,756 (5.1)	5,465 (5.3)	2,920 (2.1)	1,346 (19.0)	1,200 (▲ 0.1)	863 (5.6)	1,237 (5.2)	211 (1.9)	364 (1.6)	1,780 (9.1)	1,581 (14.1)	37 (71.2)	603 (7.8)	1,285 (9.1)	886 (14.6)	968 (▲ 6.5)	212 (2.7)
	4-6	10,089 (4.0)	3,749 (12.3)	2,040 (16.1)	593 (▲ 2.3)	1,116 (14.4)	880 (▲ 2.4)	742 (▲ 11.4)	157 (6.9)	287 (11.1)	1,624 (10.3)	1,462 (13.1)	12 (▲ 62.1)	613 (13.3)	1,272 (5.0)	890 (11.3)	765 (▲ 22.9)	162 (0.1)
	7-9	11,138 (15.5)	3,894 (12.7)	2,284 (24.9)	569 (15.9)	1,040 (▲ 8.5)	907 (10.8)	1,320 (56.0)	201 (2.3)	350 (15.4)	1,767 (18.6)	1,625 (24.5)	6 (▲ 58.7)	549 (7.8)	1,247 (2.9)	834 (▲ 0.8)	904 (11.5)	181 (15.9)
	10-12	11,031 (6.1)	3,934 (7.1)	2,312 (18.3)	726 (35.1)	896 (▲ 24.1)	841 (3.5)	913 (▲ 25.5)	225 (17.8)	475 (21.1)	1,926 (25.9)	1,607 (23.5)	16 (34.2)	539 (▲ 2.5)	1,255 (9.2)	869 (8.6)	922 (6.0)	185 (▲ 6.3)
	'24 1-3	13,452 (5.5)	5,329 (▲ 2.5)	3,304 (13.2)	1,034 (▲ 23.2)	992 (▲ 17.3)	999 (15.7)	1,262 (2.0)	219 (3.5)	395 (8.6)	2,010 (13.0)	1,745 (10.4)	60 (64.4)	687 (14.0)	1,287 (1.7)	874 (▲ 1.3)	1,263 (30.5)	199 (▲ 6.1)
	4-6	11,614 (15.1)	4,292 (14.5)	2,302 (12.8)	639 (7.9)	1,351 (21.1)	968 (10.1)	805 (8.4)	137 (▲ 12.7)	318 (11.0)	1,993 (22.7)	1,700 (16.3)	16 (27.0)	574 (▲ 6.3)	1,381 (8.6)	947 (6.4)	1,144 (49.7)	154 (▲ 4.4)
	7-9	11,895 (6.8)	4,423 (13.6)	2,775 (21.5)	615 (8.1)	1,033 (▲ 0.7)	914 (0.8)	905 (▲ 31.4)	171 (▲ 15.1)	354 (1.3)	2,087 (18.1)	1,848 (13.8)	21 (264.2)	521 (▲ 5.0)	1,523 (22.1)	1,036 (24.2)	995 (10.1)	161 (▲ 11.0)
Monthly	'23 9	4,989 (24.2)	1,908 (29.6)	1,052 (35.5)	263 (22.7)	593 (23.3)	393 (30.7)	811 (66.3)	95 (20.7)	141 (11.2)	669 (21.7)	620 (27.0)	1 (▲ 63.1)	226 (8.7)	423 (▲ 5.2)	281 (▲ 11.0)	324 (▲ 7.2)	65 (12.5)
	10	3,623 (4.6)	1,413 (7.0)	880 (21.2)	300 (35.7)	233 (▲ 37.6)	302 (▲ 3.3)	233 (▲ 38.1)	58 (8.4)	143 (25.6)	620 (27.1)	519 (24.6)	0 (▲ 95.1)	170 (1.2)	398 (23.9)	275 (21.5)	286 (▲ 7.8)	68 (9.5)
	11	3,291 (9.4)	1,022 (4.2)	636 (5.6)	173 (19.7)	214 (▲ 8.9)	250 (7.4)	260 (▲ 17.3)	68 (12.7)	175 (27.3)	656 (31.0)	522 (17.0)	9 (255.7)	169 (▲ 9.0)	379 (5.6)	265 (6.6)	312 (32.0)	58 (▲ 11.7)
	12	4,116 (4.8)	1,499 (9.2)	796 (27.0)	253 (47.3)	450 (▲ 21.6)	289 (8.1)	420 (▲ 21.5)	99 (28.5)	157 (11.4)	650 (20.0)	566 (29.1)	7 (301.0)	200 (0.2)	478 (1.9)	330 (1.2)	324 (0.3)	59 (▲ 15.3)
	'24 1	3,820 (15.8)	1,487 (9.4)	964 (29.3)	276 (▲ 13.8)	248 (▲ 15.8)	282 (15.7)	460 (44.6)	62 (27.5)	124 (31.4)	529 (24.5)	471 (23.2)	9 (373.6)	232 (59.1)	387 (▲ 4.6)	236 (▲ 18.2)	256 (▲ 0.5)	53 (▲ 2.2)
	2	3,519 (▲ 0.2)	1,348 (▲ 10.5)	844 (5.1)	262 (▲ 31.3)	243 (▲ 24.9)	280 (21.8)	277 (▲ 6.1)	73 (24.1)	107 (6.0)	626 (14.8)	530 (10.6)	10 (▲ 17.1)	177 (▲ 2.1)	354 (3.9)	250 (3.2)	276 (3.0)	45 (▲ 28.6)
	3	6,113 (3.1)	2,494 (▲ 4.1)	1,496 (9.1)	497 (▲ 23.0)	501 (▲ 14.0)	436 (12.0)	525 (▲ 15.8)	84 (▲ 19.2)	164 (▲ 2.7)	856 (5.7)	744 (3.4)	41 (82.4)	278 (0.7)	546 (5.2)	388 (9.3)	731 (65.2)	102 (6.5)
	4	4,367 (22.0)	1,812 (27.0)	1,053 (19.1)	321 (17.2)	437 (63.0)	382 (13.7)	238 (14.1)	38 (▲ 8.2)	104 (11.4)	663 (28.7)	573 (27.0)	10 (37.3)	208 (5.5)	486 (0.6)	324 (▲ 3.0)	436 (57.3)	63 (10.3)
	5	3,284 (15.3)	939 (3.2)	588 (14.7)	145 (▲ 2.3)	206 (▲ 17.1)	277 (9.8)	261 (6.8)	43 (▲ 18.8)	110 (27.5)	666 (33.8)	525 (16.0)	2 (5.3)	174 (▲ 12.7)	430 (12.2)	283 (9.5)	384 (72.8)	44 (19.5)
	6	3,963 (8.2)	1,541 (9.1)	860 (2.7)	173 (1.7)	708 (18.2)	310 (6.1)	306 (5.7)	56 (▲ 10.5)	105 (▲ 2.6)	664 (8.6)	602 (7.9)	3 (15.8)	192 (▲ 11.2)	465 (14.7)	331 (14.3)	324 (22.3)	47 (▲ 29.9)
7	3,850 (23.2)	1,368 (34.4)	966 (54.2)	199 (38.7)	203 (▲ 18.2)	331 (16.1)	259 (11.8)	54 (▲ 4.9)	100 (▲ 20.6)	709 (25.6)	826 (21.8)	2 (▲ 48.6)	166 (2.3)	496 (19.7)	329 (19.4)	368 (37.6)	52 (▲ 23.6)	
8	3,463 (14.5)	1,248 (29.0)	776 (28.0)	219 (34.9)	254 (27.3)	259 (13.5)	262 (▲ 5.3)	51 (2.0)	95 (13.7)	588 (10.2)	525 (6.8)	10 (757.6)	155 (▲ 3.3)	531 (29.3)	375 (35.2)	273 (▲ 12.5)	47 (▲ 4.9)	
9	4,581 (▲ 8.2)	1,807 (▲ 5.3)	1,033 (▲ 1.8)	197 (▲ 25.1)	577 (▲ 2.7)	324 (▲ 17.6)	384 (▲ 52.7)	66 (▲ 30.1)	159 (13.4)	790 (18.2)	698 (12.6)	10 (744.1)	200 (▲ 11.5)	496 (17.4)	332 (18.2)	354 (9.2)	63 (▲ 2.5)	

Rounding off to hundreds of millions yen, the figure of the total column may not correspond to the inclusive sum of each item in the table. Also, the figure of information-related device may not correspond to the inclusive sum of its breakdown.